

THIS MAP WAS PREPARED FOR ASSESSMENT PURPOSE ONLY.

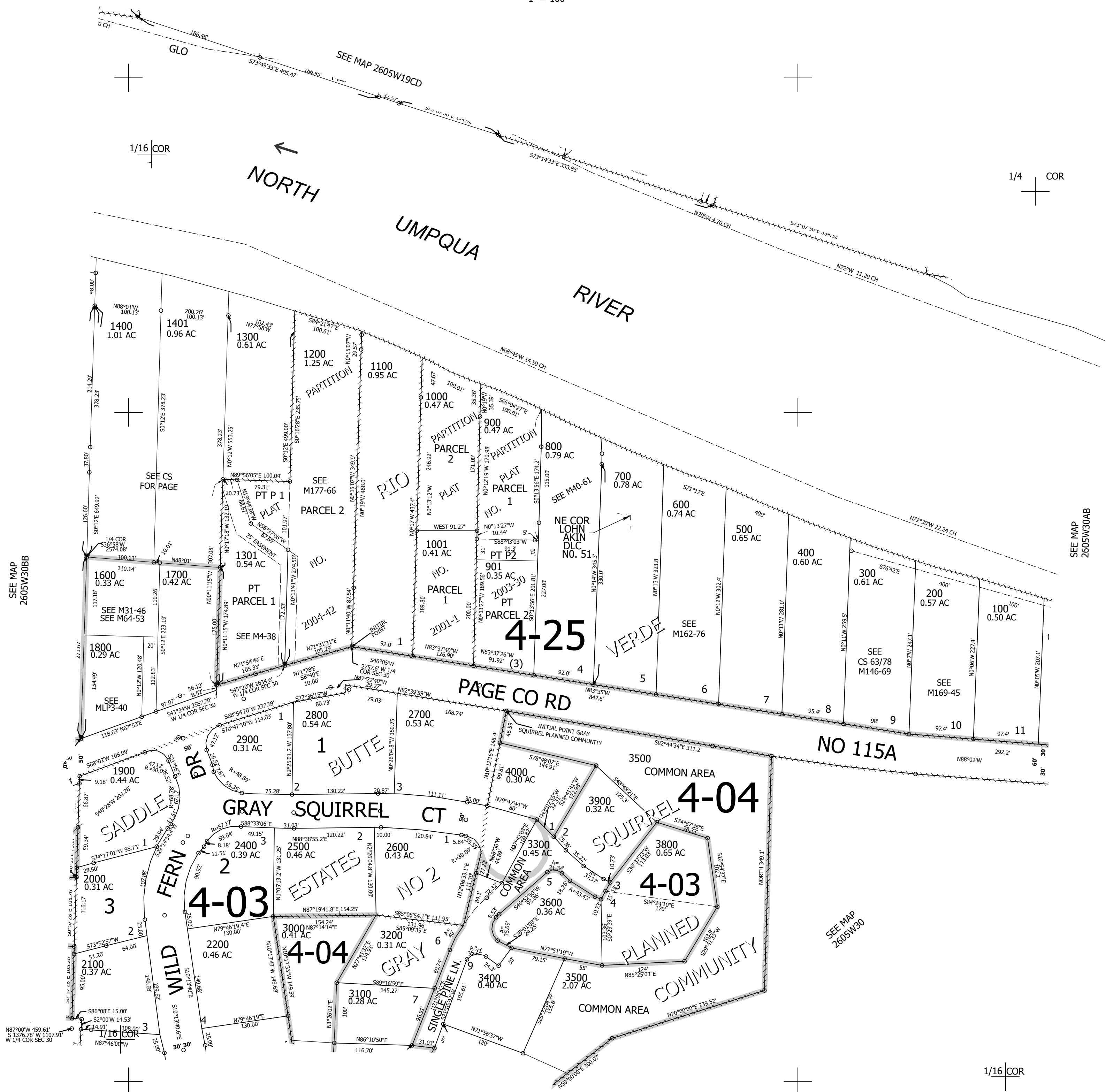
Upper Left:  
123°20'32"W 43°17'16"N  
4164651E 603651N ft

NE1/4 NW1/4 SEC.30 T.26S. R.05W. W.M.  
DOUGLAS COUNTY  
1" = 100'

Date Exported 2026-03-05

260530BA  
Roseburg

CANCELLED NOS:  
1500 2300 902  
3700 1302



SEE MAP  
2605W30BD

1/16 COR

260530BA  
Roseburg

Lower Right:  
123°20'5"W 43°17"N  
4166623E 601913N ft