

THIS MAP WAS PREPARED FOR ASSESSMENT PURPOSE ONLY.

SEC.28 T.26S. R.5W. W.M.
DOUGLAS COUNTY

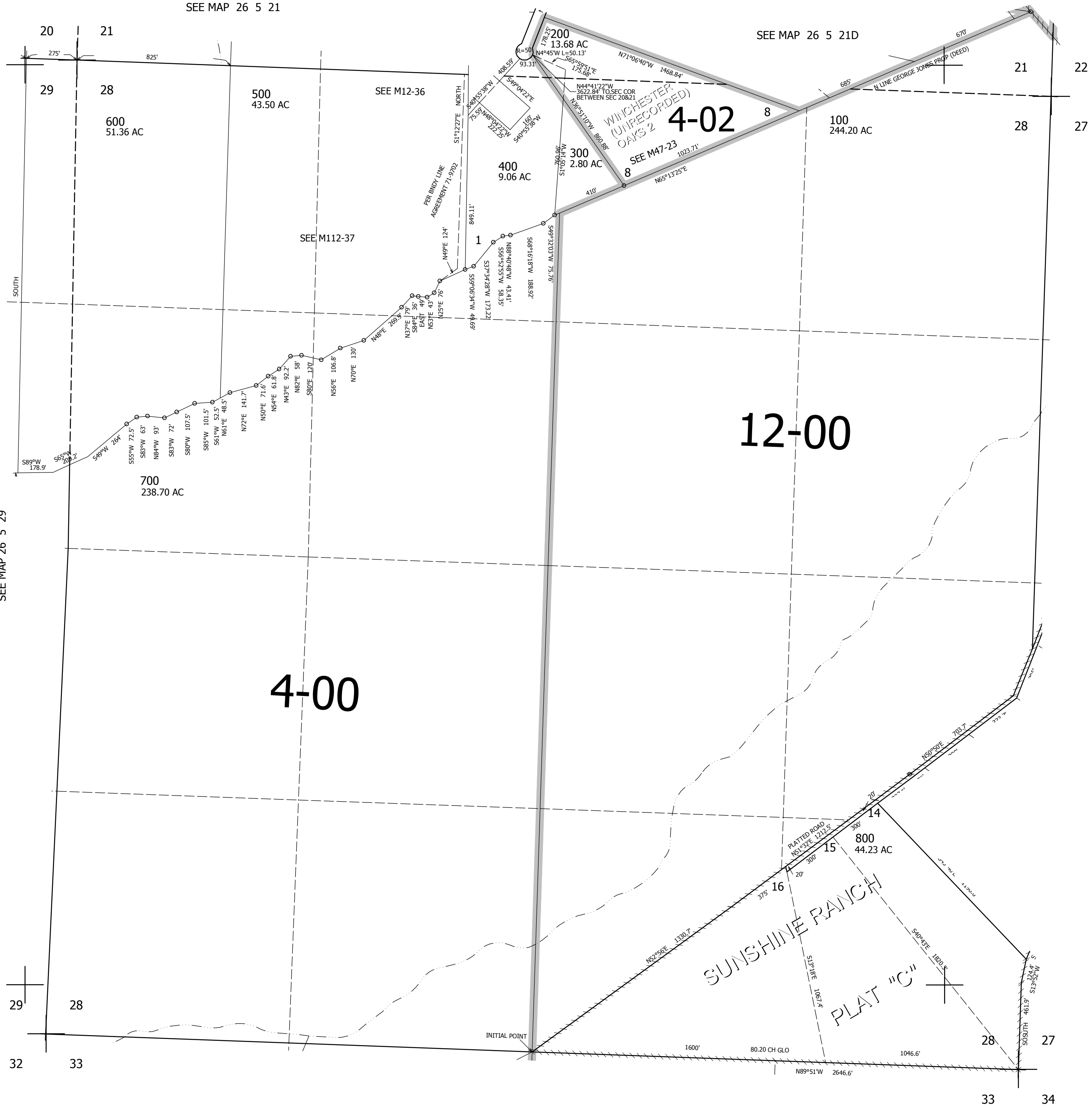
REVISED ON
9-11-09

26 5 28

1" = 400'

SEE MAP 26 5 21

SEE MAP 26 5 21D



CANCELLED NO'S

SEE MAP 26 5 29

SEE MAP 26 5 27

598,000

SEE MAP 26 5 33

4,163,000

26 5 28