

THIS MAP WAS PREPARED FOR ASSESSMENT PURPOSE ONLY.

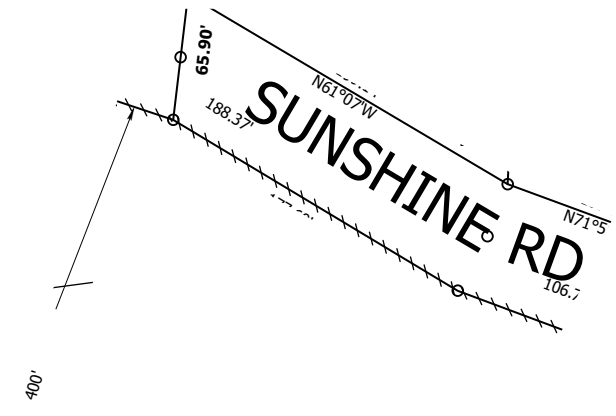
Upper Left:  
123°15'48"W 43°17'4"N  
4185630E 601758N ft

SE1/4 NW1/4 SEC.26 T.26S. R.05W. W.M.  
DOUGLAS COUNTY  
1" = 100'

Date Exported 2026-03-25

260526BD

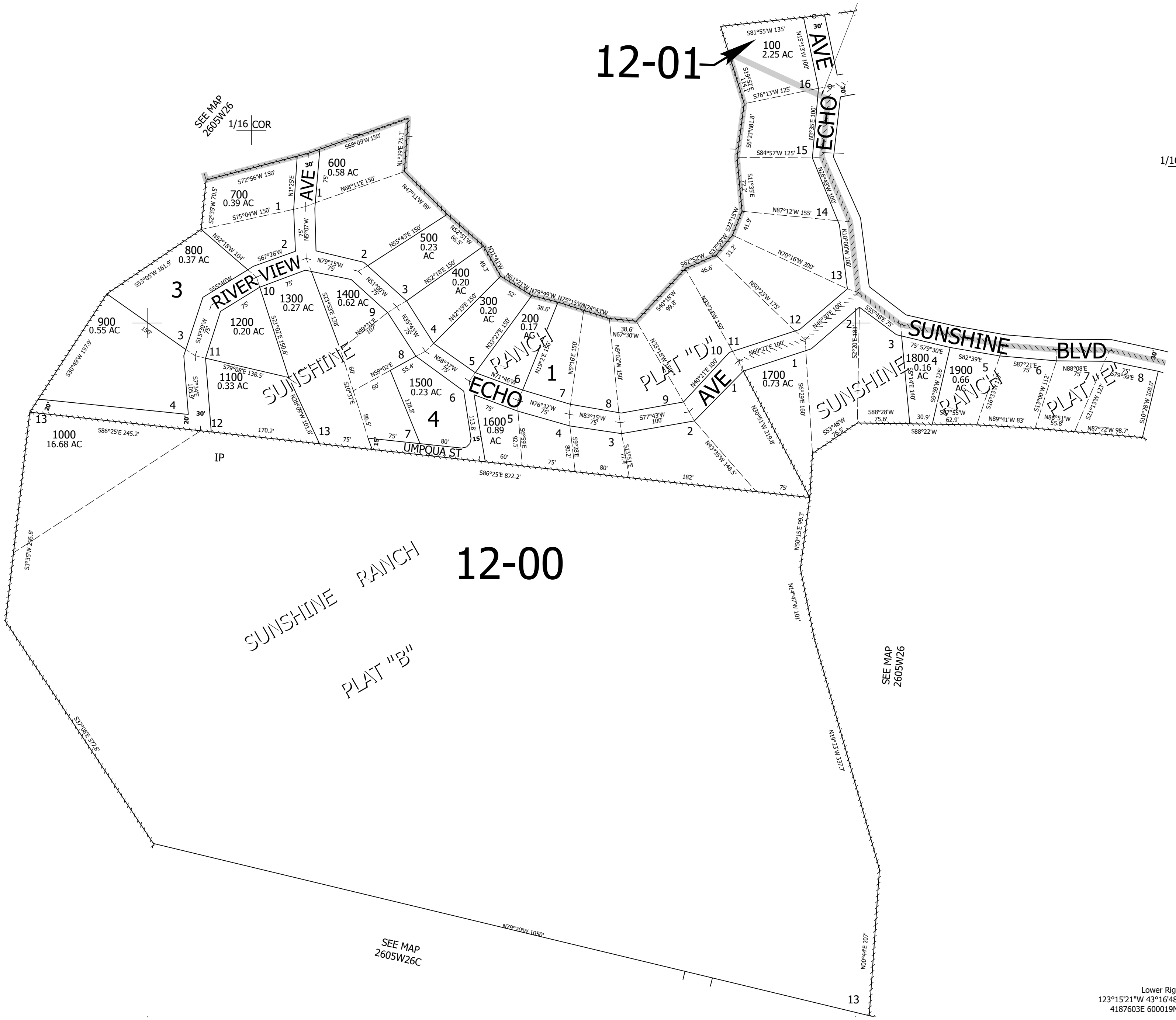
CANCELLED NOS:



1/16 COR

12-01

SEE MAP 2605W26  
1/16 COR



12-00

SEE MAP 2605W26

SEE MAP 2605W26

260526BD

Lower Right:  
123°15'21"W 43°16'48"N  
4187603E 600019N ft