

THIS MAP WAS PREPARED FOR ASSESSMENT PURPOSE ONLY.

Upper Left:
123°15'44"W 43°17'14"N
4185971E 602767N ft

NE1/4 NW1/4 SEC.26 T.26S. R.05W. W.M.
DOUGLAS COUNTY
1" = 100'

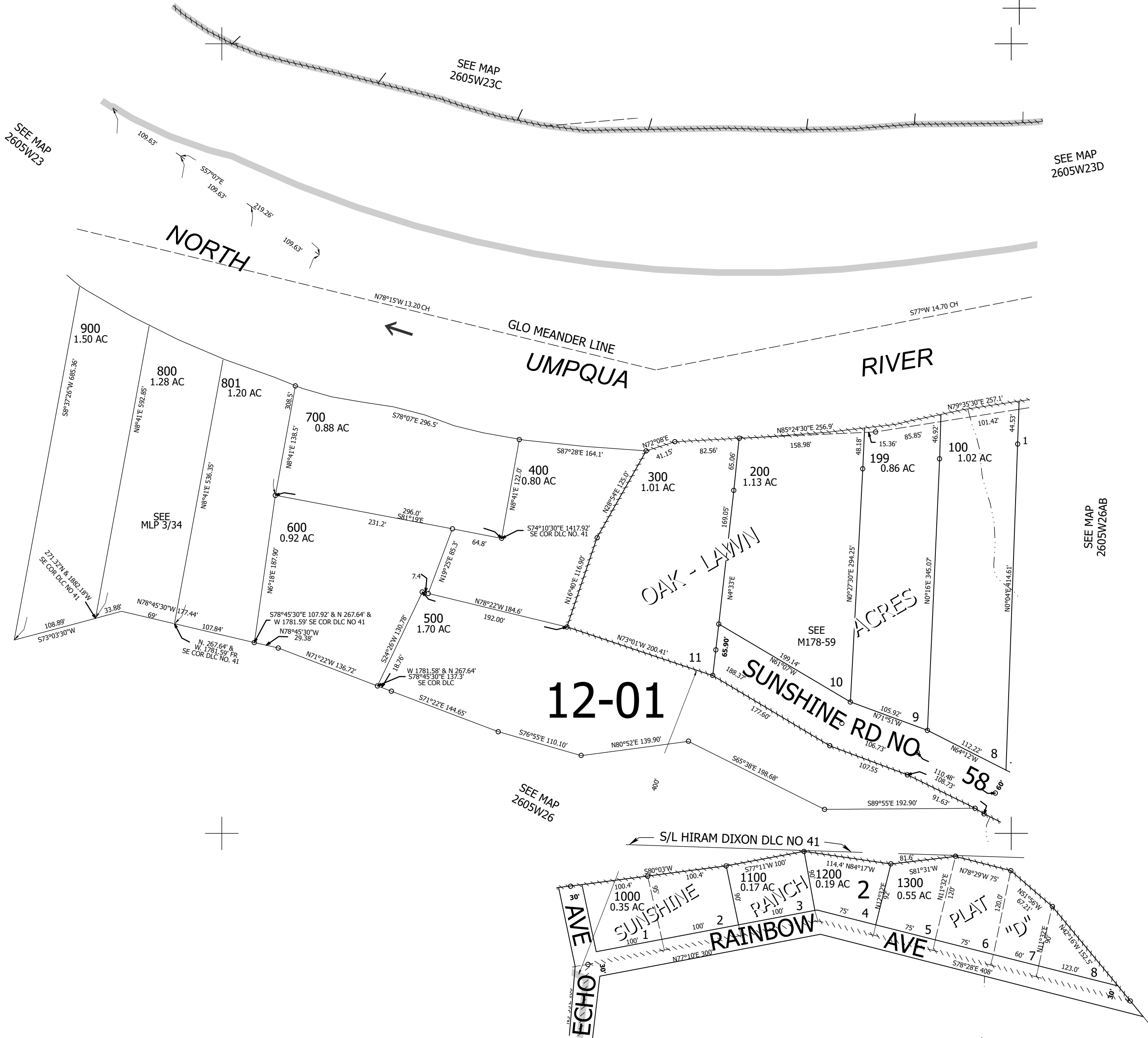
Date Exported 2026-03-25

260526BA

CANCELLED NOS:

1/16 COR

1/4 COR



1/16 COR

1/16 COR

260526BA

Lower Right:
123°15'16"W 43°16'58"N
4187944E 601028N ft