

THIS MAP WAS PREPARED FOR ASSESSMENT PURPOSE ONLY.

Upper Left:  
123°15'33"W 43°17'1"N  
4186748E 601354N ft

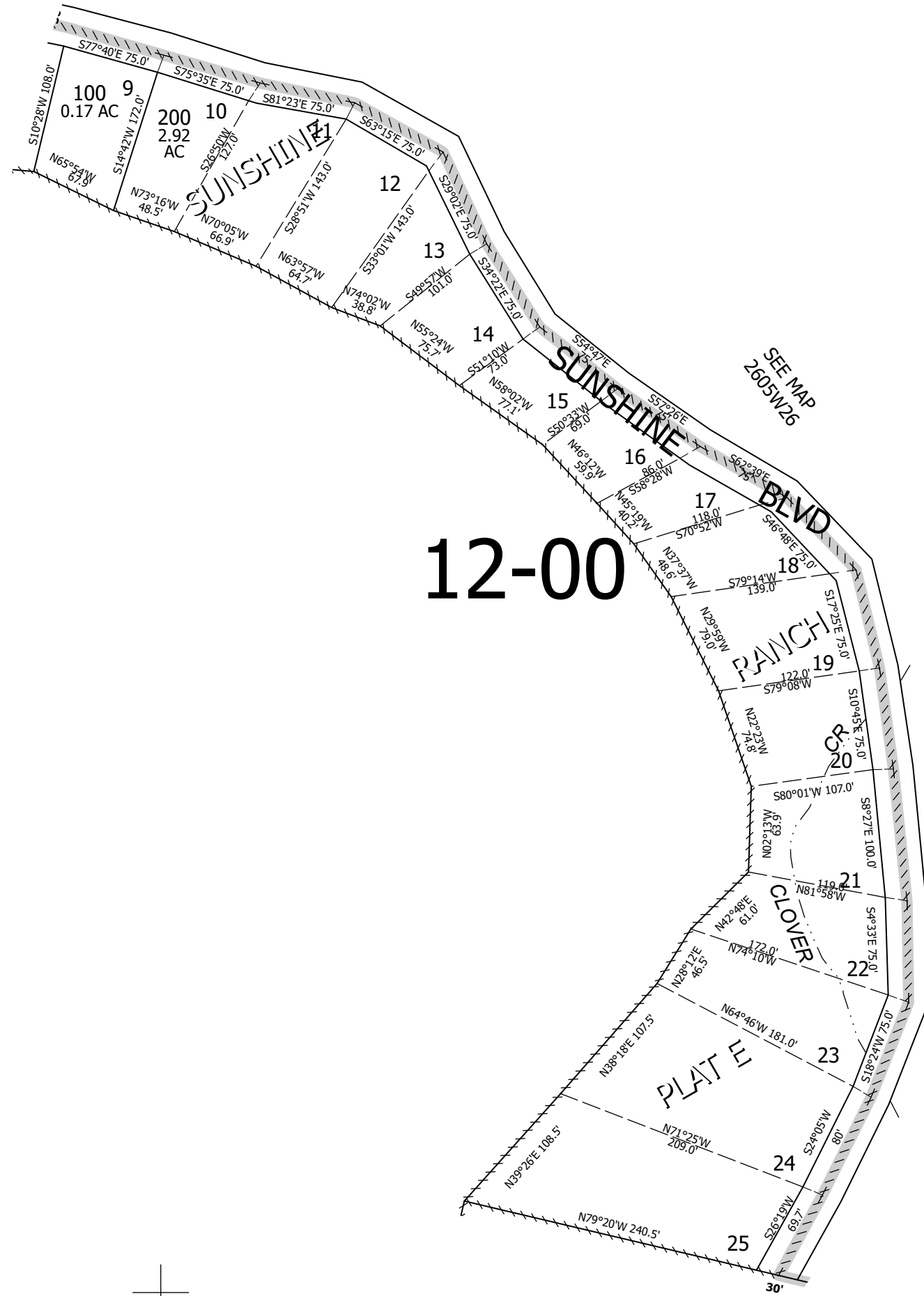
SW1/4 NE1/4 SEC.26 T.26S. R.05W. W.M.  
DOUGLAS COUNTY

Date Exported 2026-03-25

260526AC

CANCELLED NOS:

1/16 COR



12-00

CEN SEC

SEE MAP  
2605W26D

260526AC

Lower Right:  
123°15'5"W 43°16'44"N  
4188720E 599616N ft