

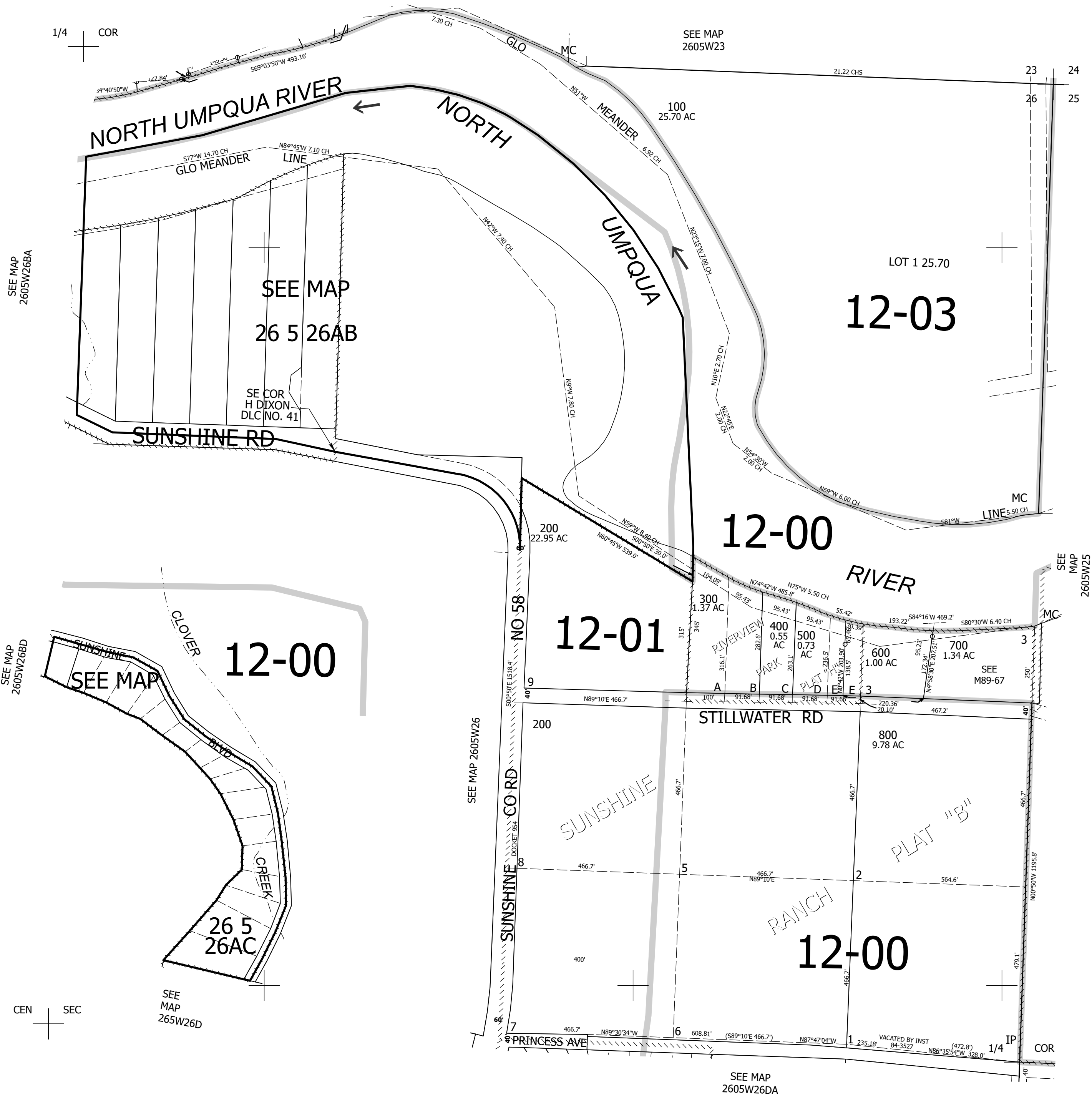
THIS MAP WAS PREPARED FOR ASSESSMENT PURPOSE ONLY.

Upper Left:
123°15'33"W 43°17'16"N
4186813E 602944N ft

NE1/4 SEC.26 T.26S. R.05W. W.M.
DOUGLAS COUNTY
1" = 200'

Date Exported 2024-07-24

CANCELLED NOS:
701



CEN SEC

SEE MAP
2605W26DA

Lower Right:
123°14'38"W 43°16'43"N
4190738E 599466N ft