

THIS MAP WAS PREPARED FOR ASSESSMENT PURPOSE ONLY.

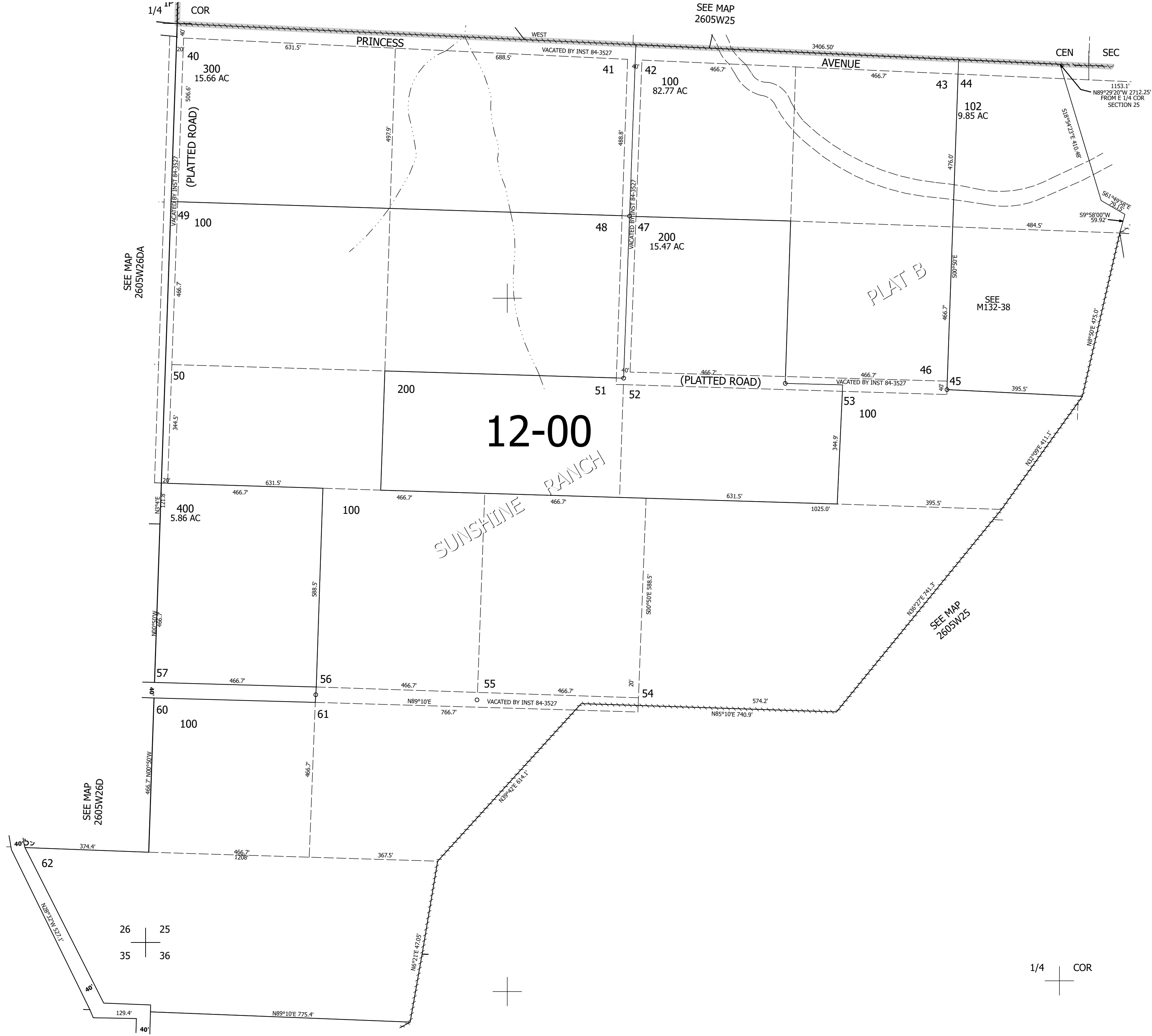
Upper Left:  
123°14'58"W 43°16'49"N  
4189247E 600105N ft

SW1/4 SEC.25 T.26S. R.05W. W.M.  
DOUGLAS COUNTY  
1" = 200'

Date Exported 2024-07-23

260525C  
& INDEX

CANCELLED NOS:  
301 101



SEE MAP  
2605W26DA

SEE MAP  
2605W25

PLAT B

12-00

SUNSHINE RANCH

SEE MAP  
2605W25

SEE MAP  
2605W26D

SEE MAP  
2605W36

26	25
35	36

1/4 COR

260525C  
& INDEX

Lower Right:  
123°14'4"W 43°16'16"N  
4193172E 596627N ft