

THIS MAP WAS PREPARED FOR ASSESSMENT PURPOSE ONLY.

NE1/4 SEC.23 T.26S. R.5W. W.M.  
DOUGLAS COUNTY  
1" = 200'

REVISED ON  
5-2-13

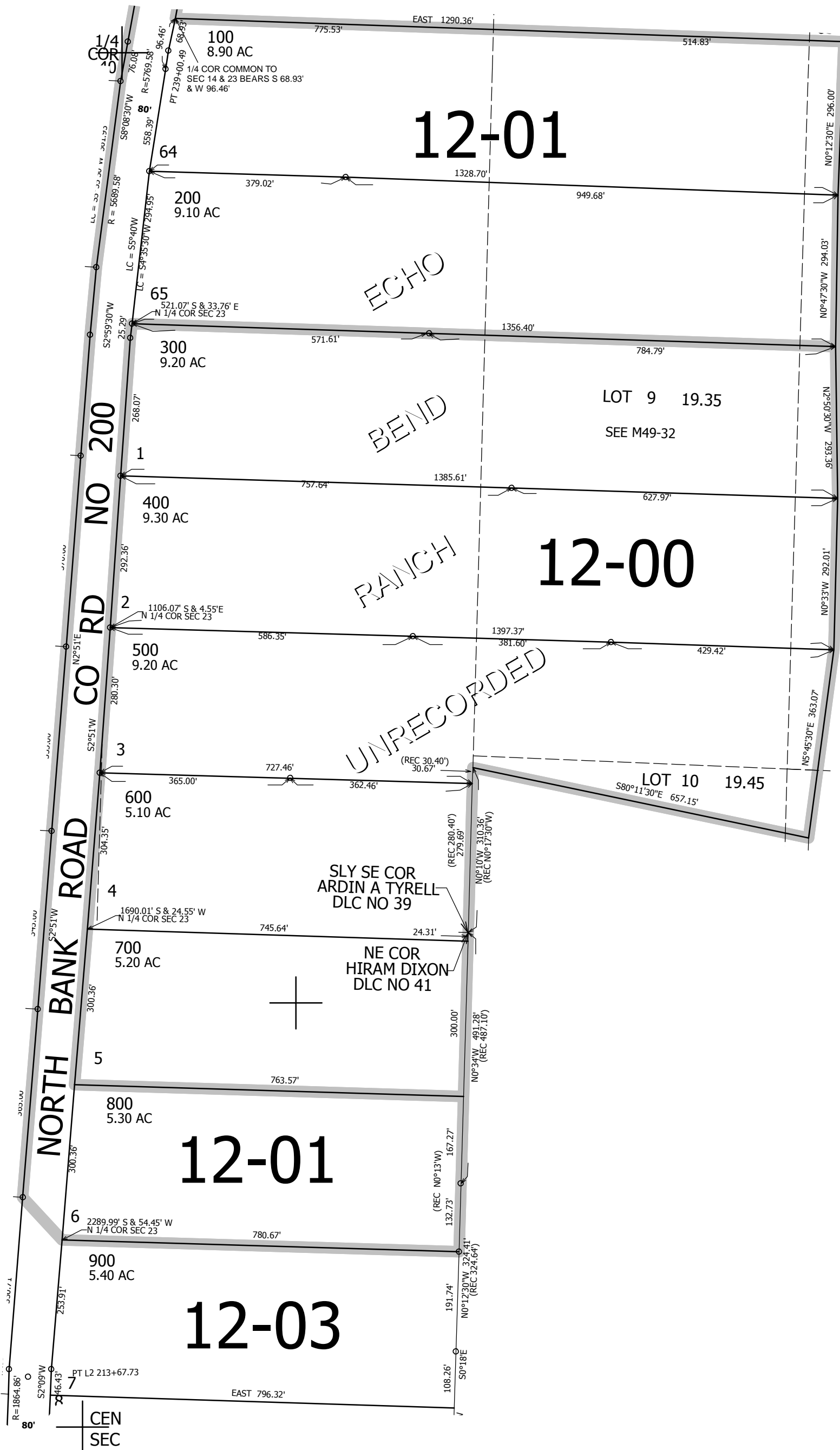
26 5 23A

SEE MAP 26 5 14D

SEE MAP 26 5 23B

SEE MAP 26 5 23

SEE MAP 26 5 23D



14	13
23	24

CANCELLED NO'S

606,000

4,190,000

26 5 23A

1/4  
COR