

THIS MAP WAS PREPARED FOR ASSESSMENT PURPOSE ONLY.

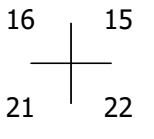
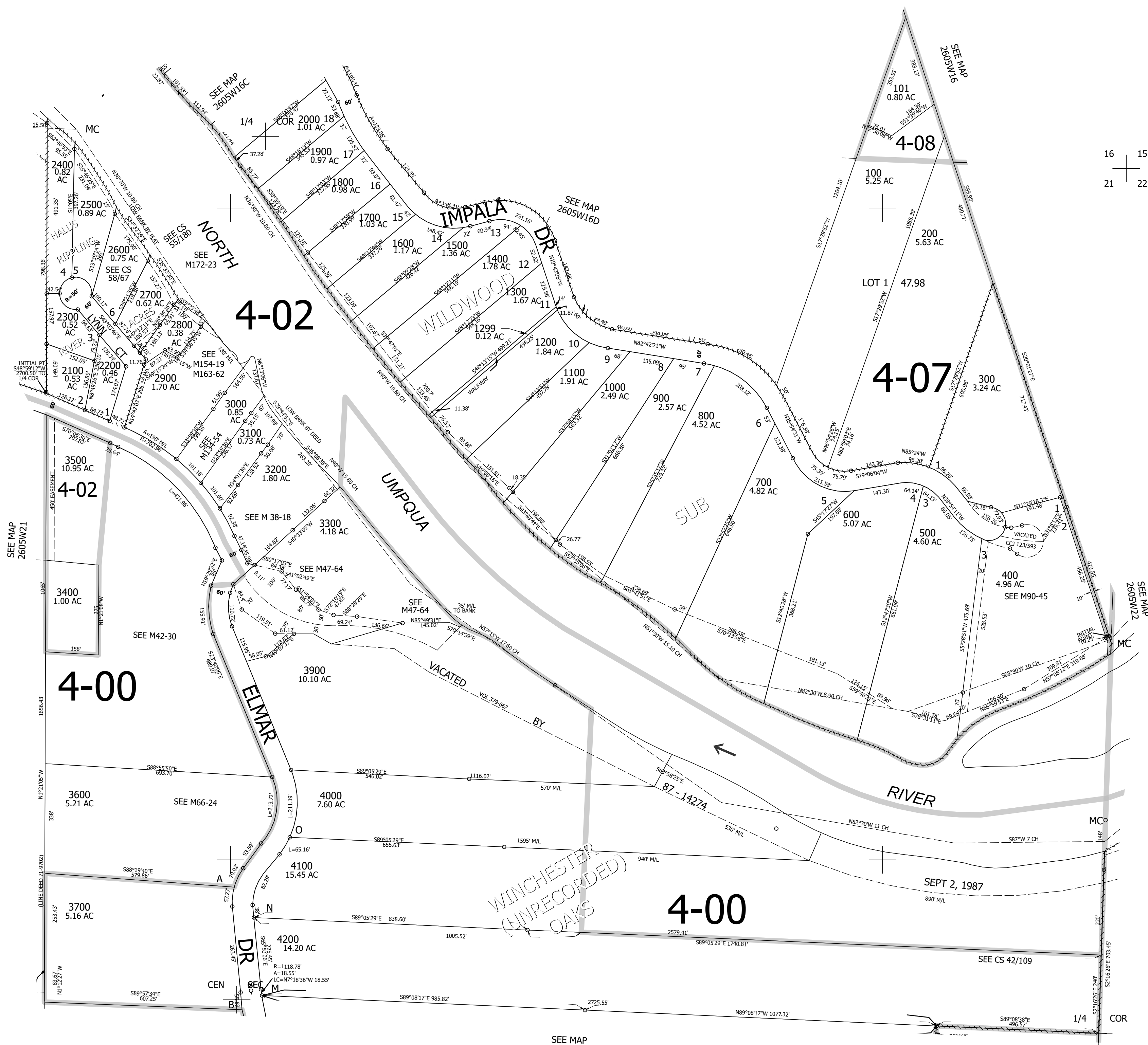
Upper Left:  
123°18'W 43°18'11"N  
4176082E 608834N ft

NE1/4 SEC.21 T.26S. R.05W. W.M.  
DOUGLAS COUNTY  
1" = 200'

Date Exported 2026-03-26

260521A

CANCELLED NOS:  
3401 301 302  
3800 2701 2801



WINCHESTER  
(UNRECORDED)  
OAKS

260521A

Lower Right:  
123°17'6"W 43°17'37"N  
4180009E 605234N ft