

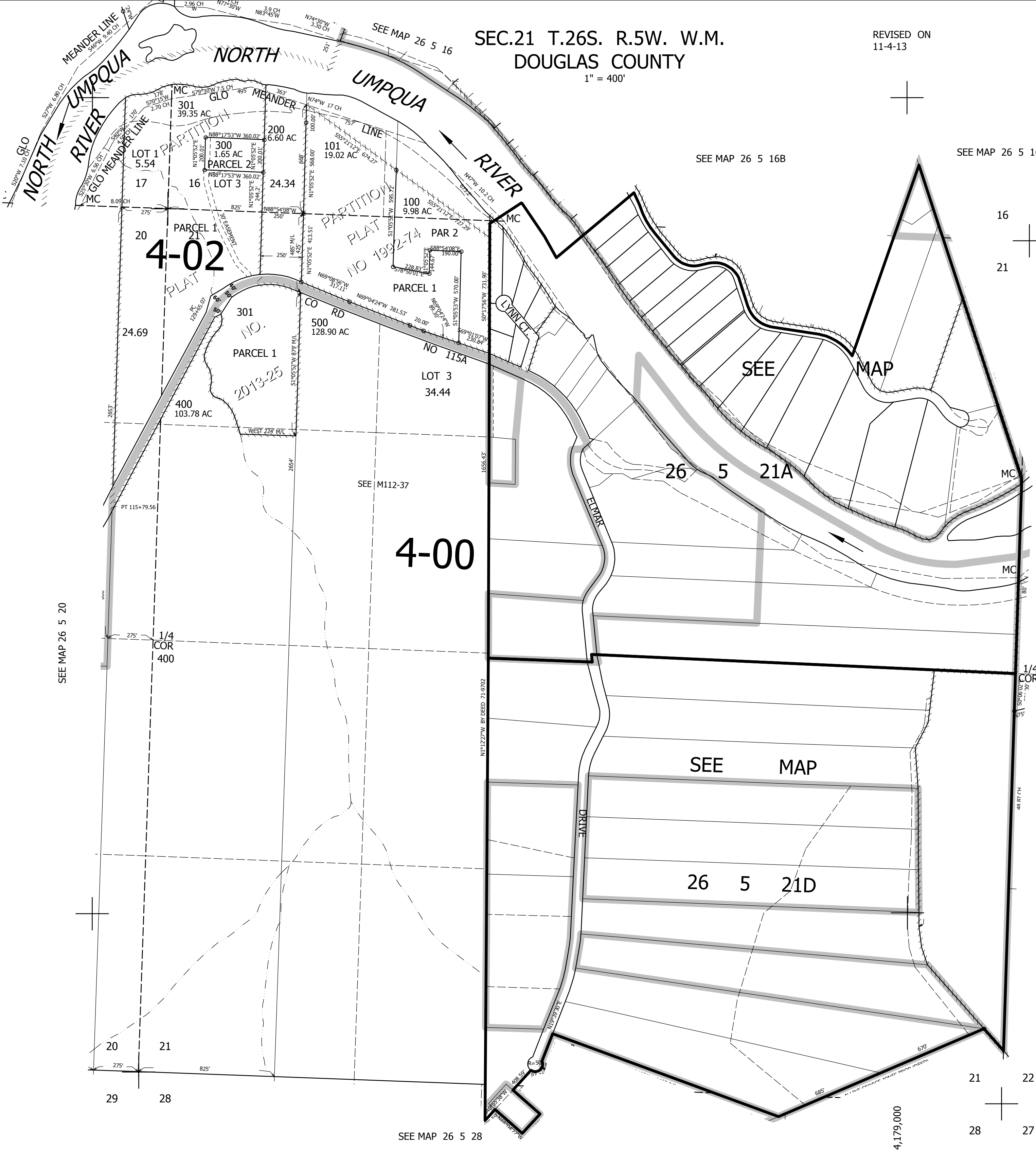
THIS MAP WAS PREPARED FOR ASSESSMENT PURPOSE ONLY.

SEC.21 T.26S. R.5W. W.M. DOUGLAS COUNTY

REVISED ON 11-4-13

26 5 21 & INDEX

1" = 400'



SEE MAP 26 5 20

SEE MAP 26 5 28

SEE MAP 26 5 16B

SEE MAP 26 5 16

CANCELLED NO'S 401

SEE MAP 26 5 22

604,000

26 5 21 & INDEX

4,179,000