

THIS MAP WAS PREPARED FOR ASSESSMENT PURPOSE ONLY.

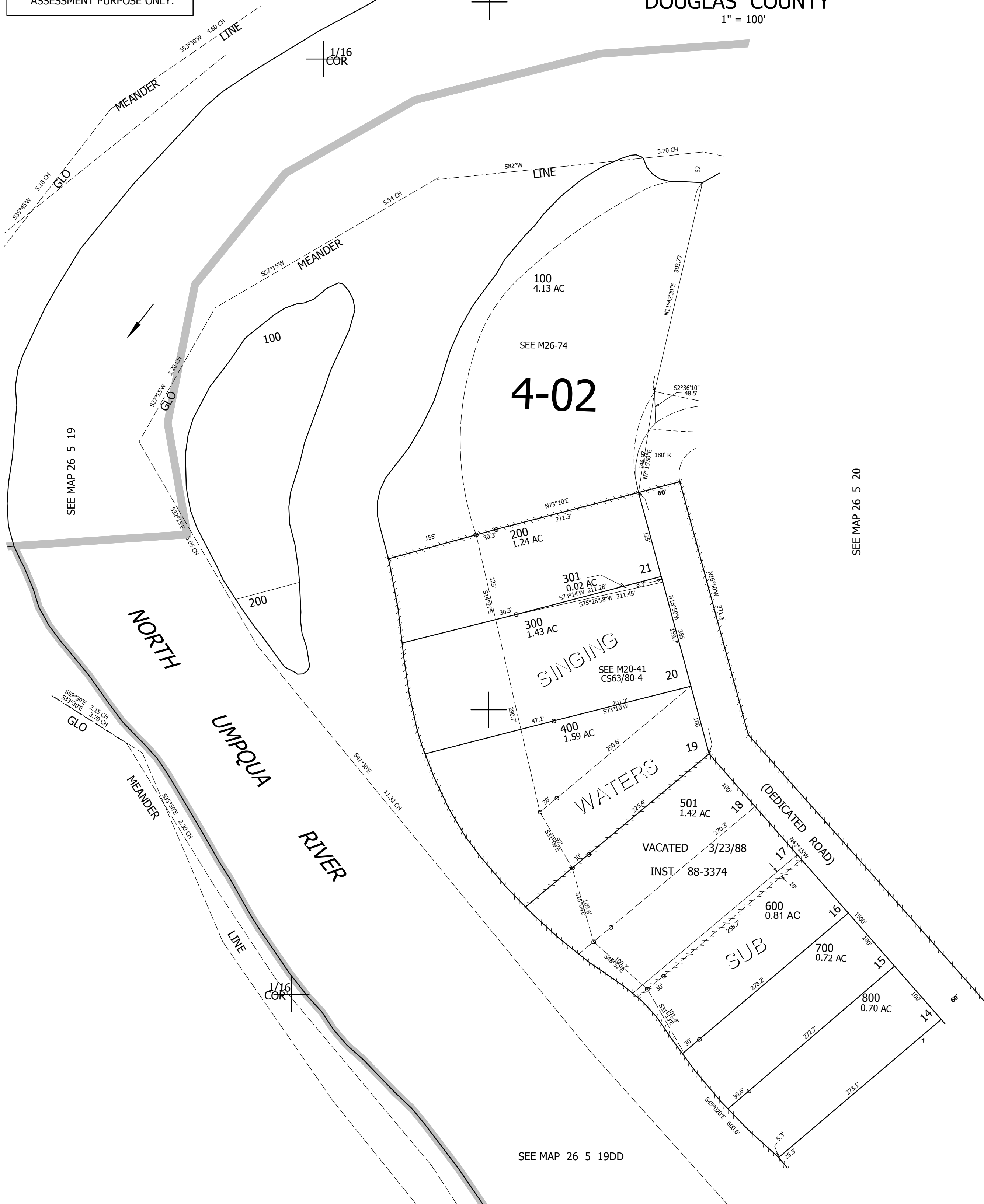
SEE MAP 26 5 19

NE1/4 SE1/4 SEC.19 T.26S. R.5W. W.M. DOUGLAS COUNTY

1" = 100'

REVISED ON 1-2-14

26 5 19DA



1/16 COR

1/4 COR

CANCELLED NO'S 502 500

SEE MAP 26 5 20

SEE MAP 26 5 19

605,000

VACATED 3/23/88 INST 88-3374

1/16 COR

1/16 COR

SEE MAP 26 5 19DD

4,169,000

26 5 19DA