

THIS MAP WAS PREPARED FOR ASSESSMENT PURPOSE ONLY.

SE1/4 SW1/4 SEC.19 T.26S. R.5W. W.M.
DOUGLAS COUNTY

REVISED ON
1-27-21

26 5 19CD

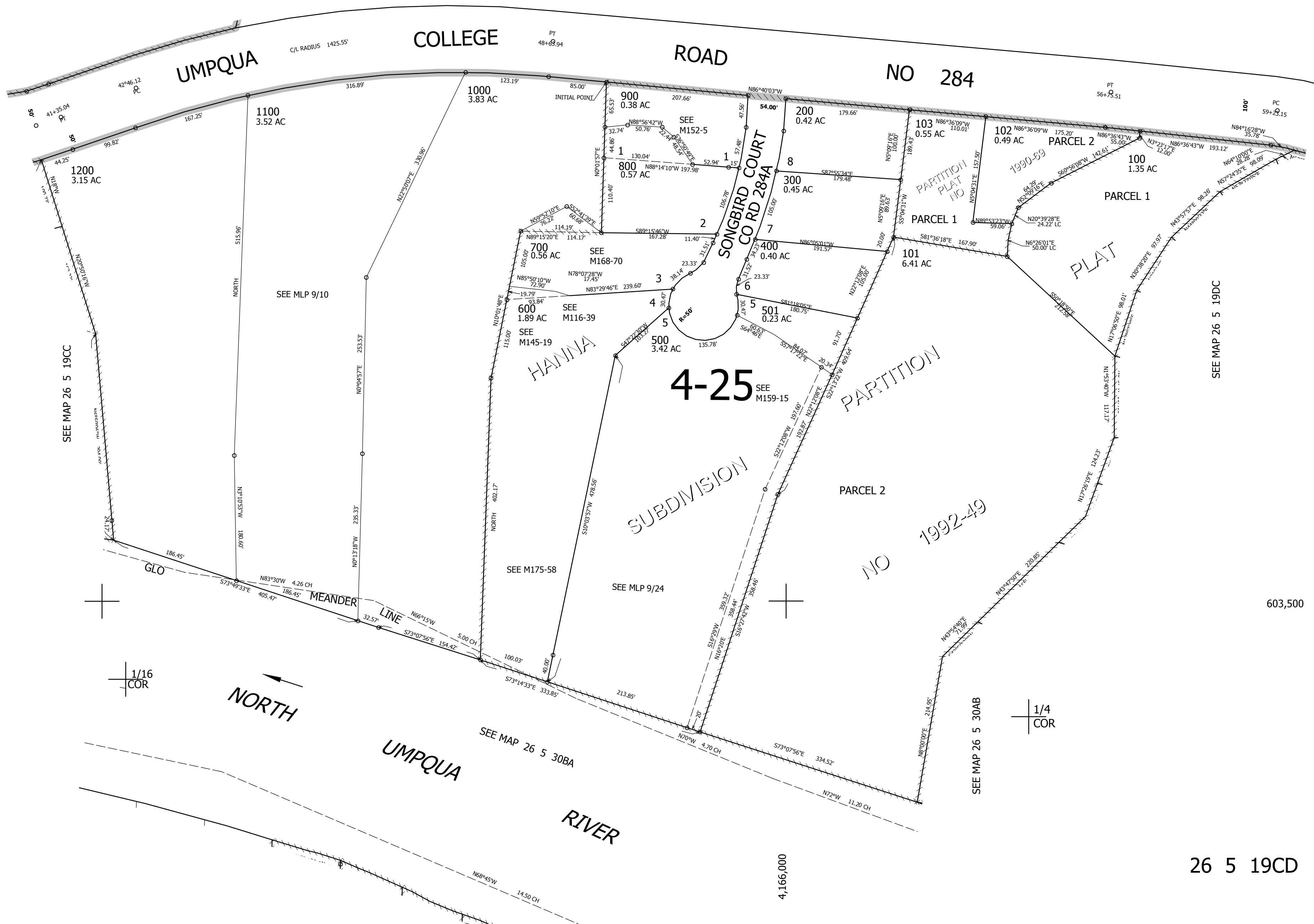
1/16
COR

1/16
COR

CANCELLED NO'S
701 901 502
1001

1" = 100'

SEE MAP 26 5 19



SEE MAP 26 5 19DC

603,500

SEE MAP 26 5 30AB

4,166,000

26 5 19CD