

THIS MAP WAS PREPARED FOR ASSESSMENT PURPOSE ONLY.

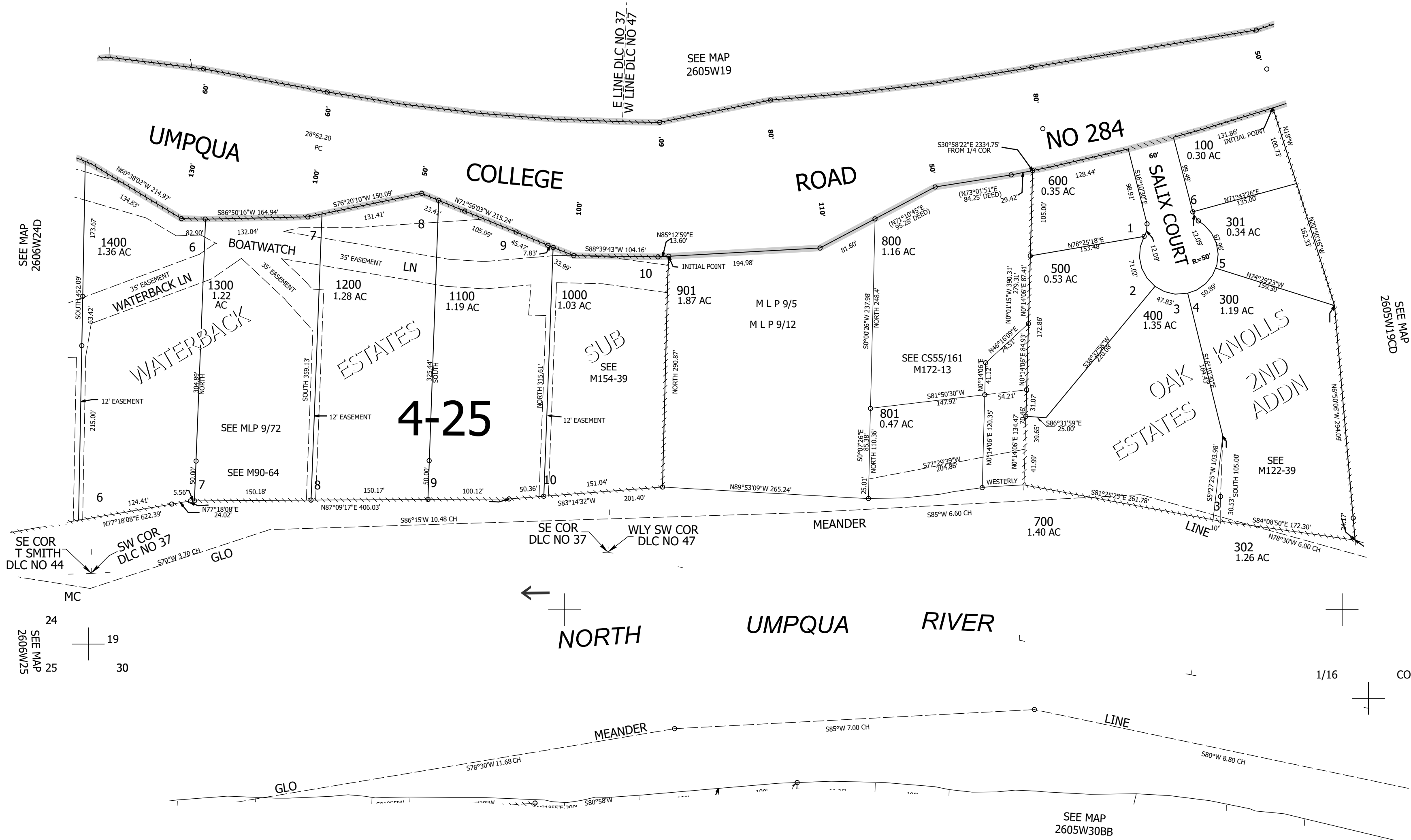
Upper Left:
123°20'52"W 43°17'25"N
4163203E 604627N ft

SW1/4 SW1/4 SEC.19 T.26S. R.05W. W.M.
DOUGLAS COUNTY
1" = 100'

Date Exported 2023-11-28

260519CC
Roseburg

CANCELLED NOS:
900 1101 1401
902 1201 1402
903 1301 1500
904 1302 1501
401 1502 1503
1504 802 200
701



SEE MAP
2606W24D

SEE MAP
2605W19CD

SE COR
T SMITH
DLC NO 44

SW COR
DLC NO 37

SE COR
DLC NO 37

WLY SW COR
DLC NO 47

SEE MAP
2606W25

SEE MAP
2605W30BB

260519CC
Roseburg

Lower Right:
123°20'25"W 43°17'8"N
4165165E 602847N ft