

THIS MAP WAS PREPARED FOR ASSESSMENT PURPOSE ONLY.

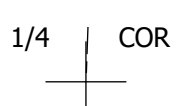
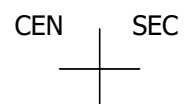
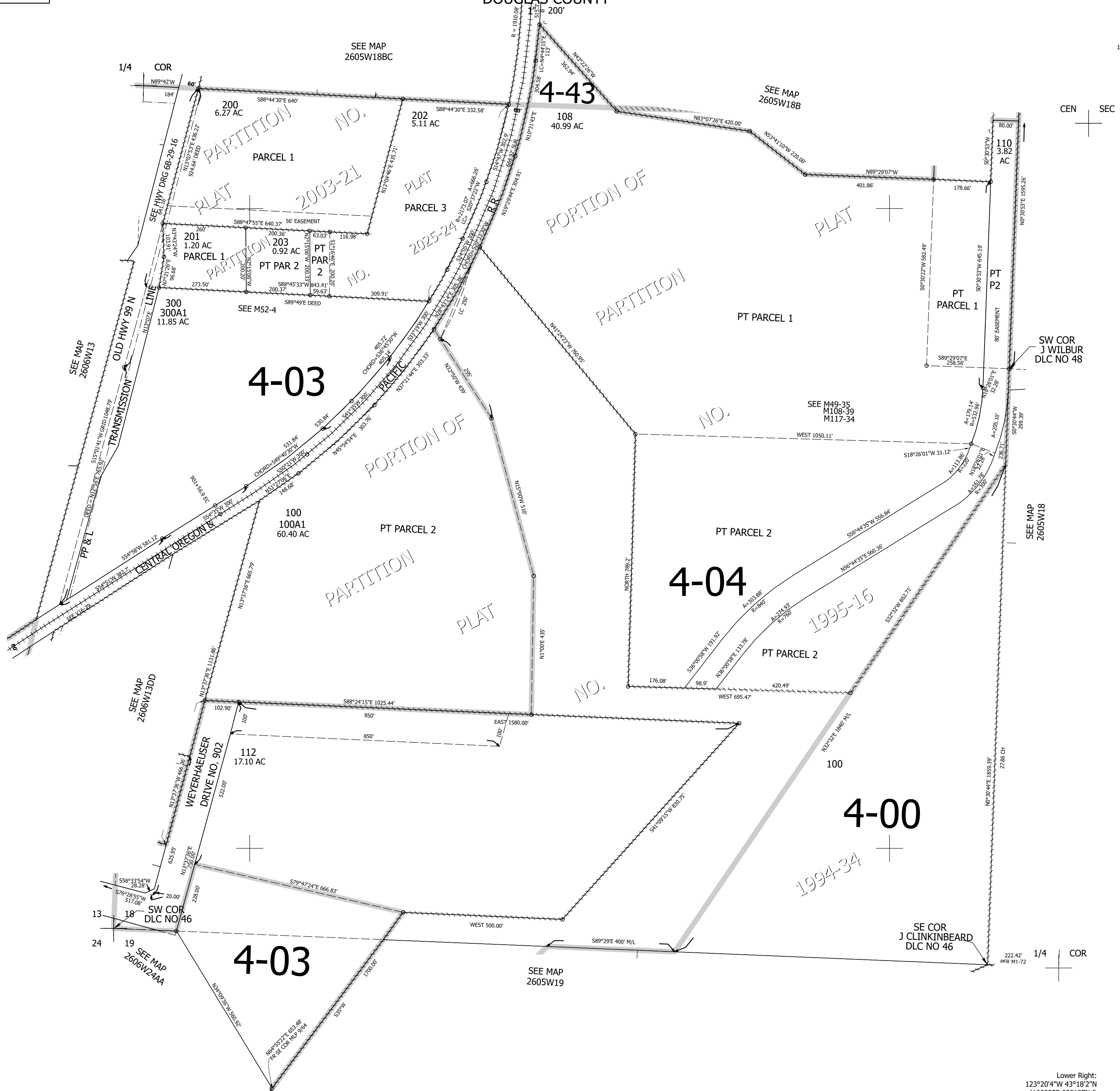
Upper Left:
123°20'59"W 43°18'36"N
4162969E 611787N ft

SW1/4 SEC.18 T.26S. R.05W. W.M.
DOUGLAS COUNTY

Date Exported 2026-04-29

260518C
& INDEX

CANCELLED NOS:
103 106 103M1
109 104 101M1
102M1 105M1 108M1
110M1 101 301
111 107 113
114 102 105
204 205



260518C
& INDEX

Lower Right:
123°20'4"W 43°18'2"N
4166895E 608187N ft