

THIS MAP WAS PREPARED FOR ASSESSMENT PURPOSE ONLY.

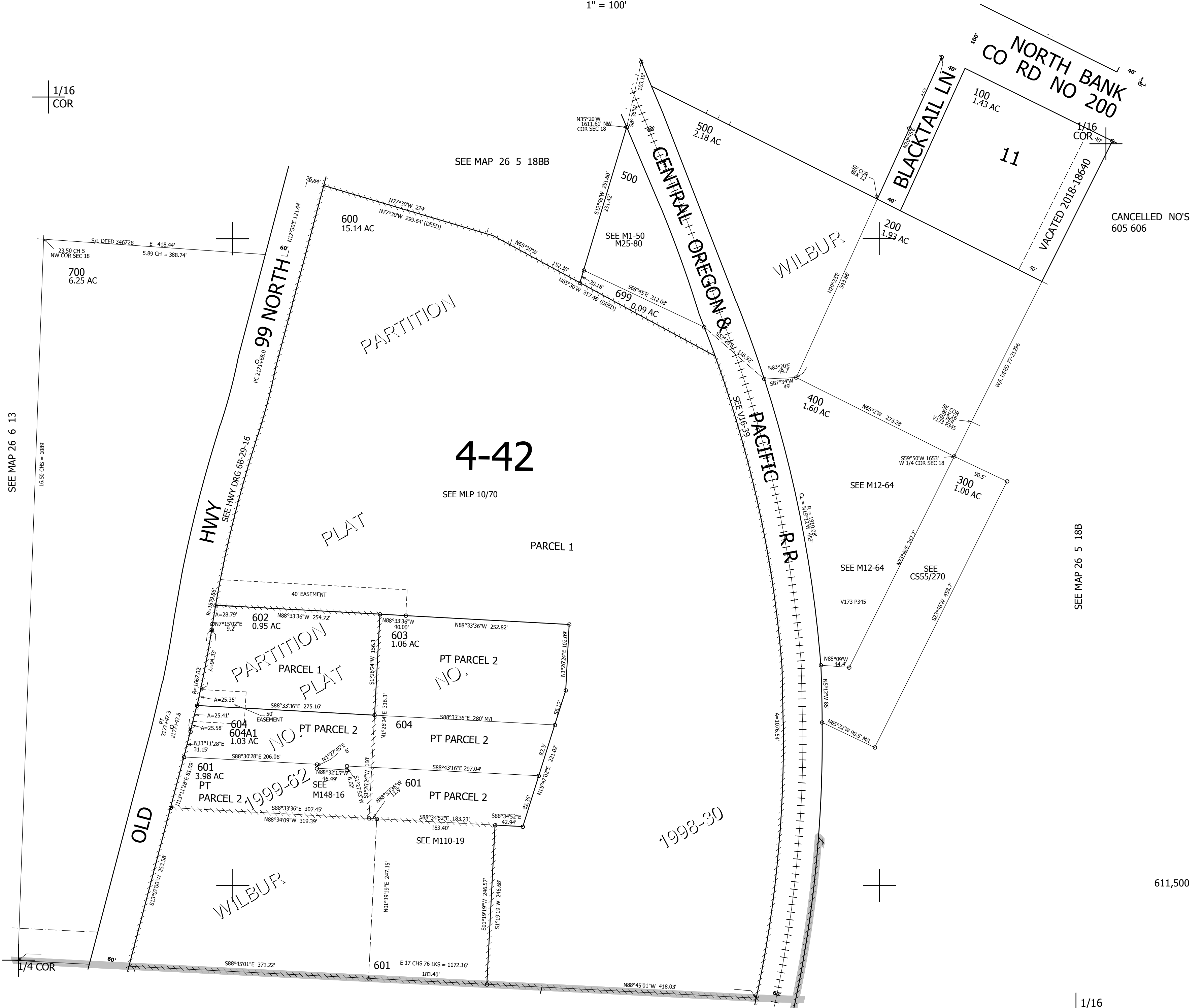
SW1/4 NW1/4 SEC.18 T.26S. R.5W. W.M.
DOUGLAS COUNTY

REVISED ON
11-29-18

26 5 18BC

1" = 100'

1/16
COR



SEE MAP 26 6 13

SEE MAP 26 5 18BB

4-42

SEE MLP 10/70

PARCEL 1

SEE MAP 26 5 18B

CANCELLED NO'S
605 606

611,500

SEE MAP 26 5 18C

4,165,000

1/16
COR

26 5 18BC