

THIS MAP WAS PREPARED FOR ASSESSMENT PURPOSE ONLY.

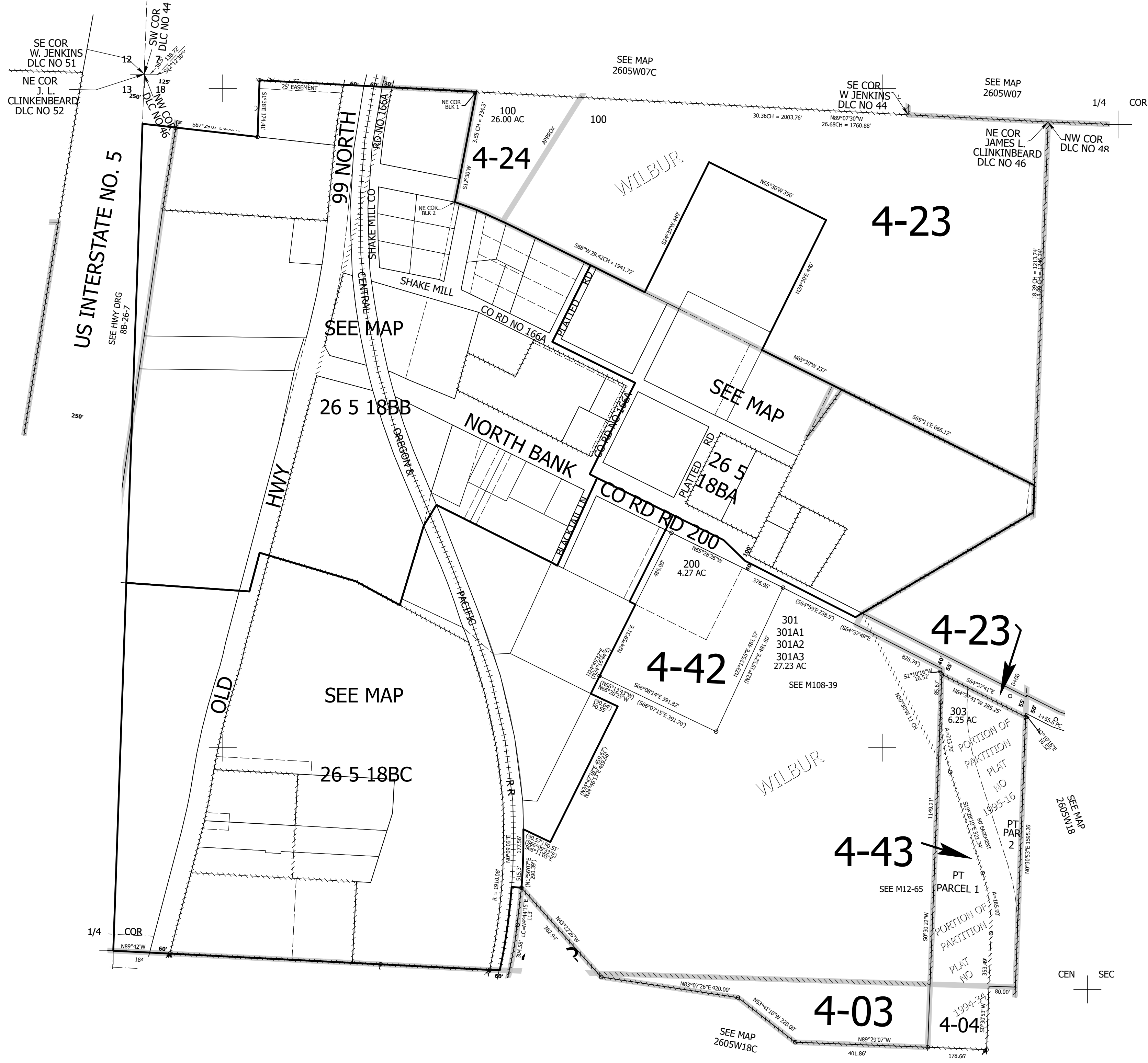
Upper Left:
123°20'59"W 43°19'2"N
4163054E 614464N ft

NW1/4 SEC.18 T.26S. R.05W. W.M.
DOUGLAS COUNTY
1" = 200'

Date Exported 2026-02-18

260518B
& INDEX

CANCELLED NOS:
302 302M1 300



Lower Right:
123°20'4"W 43°18'28"N
4166981E 610864N ft

260518B
& INDEX