

THIS MAP WAS PREPARED FOR ASSESSMENT PURPOSE ONLY.

Upper Left:
123°19'52"W 43°19'5"N
4168026E 614607N ft

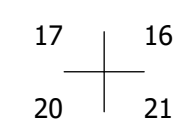
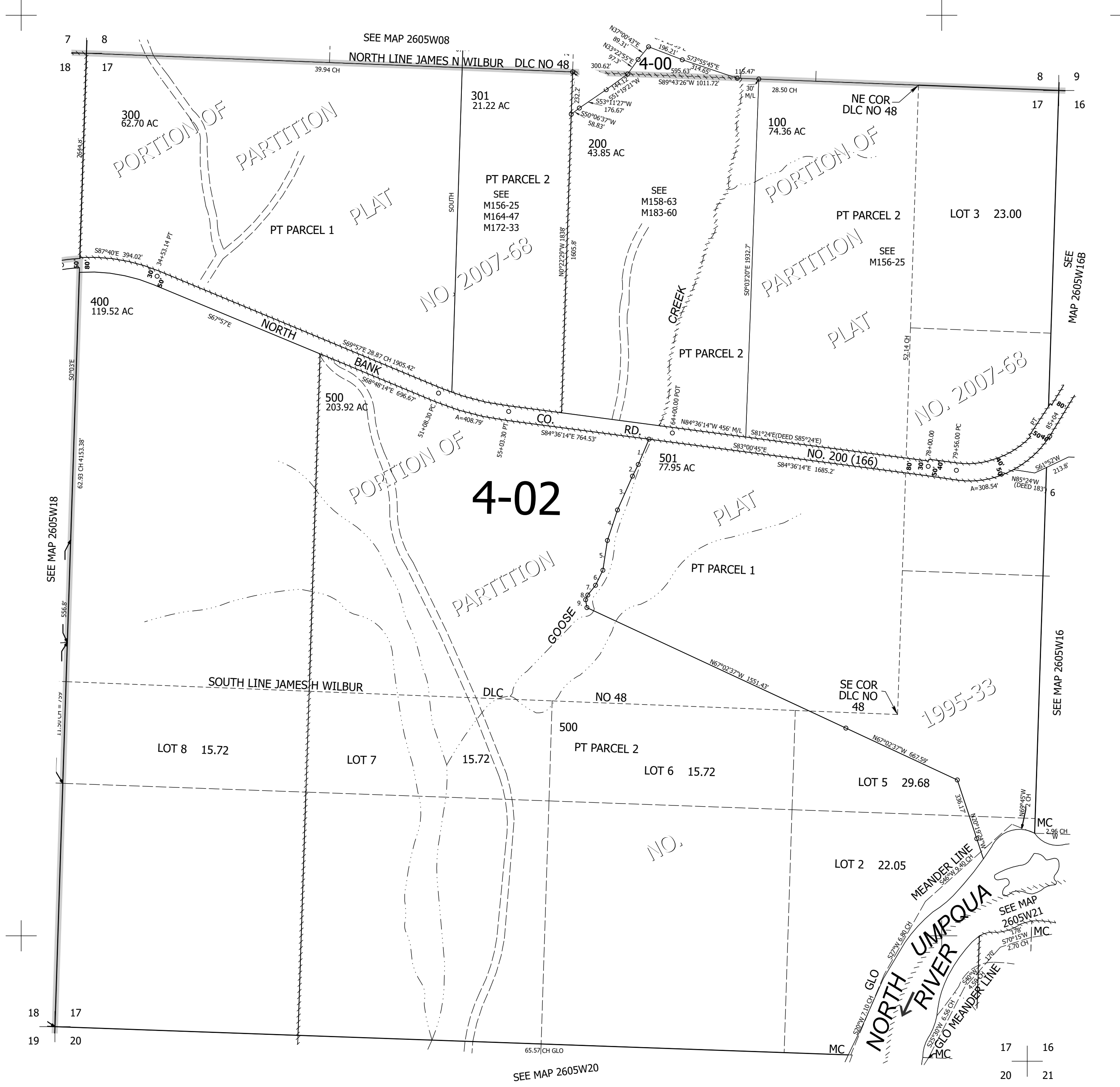
SEC.17 T.26S. R.05W. W.M.
DOUGLAS COUNTY
1" = 400'

Date Exported 2024-05-07

260517

CANCELLED NOS:
300A1 201 101

- PARCEL 501
1. S20°58'38"W 164.16'
 2. S24°24'45"W 70.77'
 3. S21°52'51"W 201'
 4. S16°18'29"W 174.26'
 5. S6°38'20"W 163.51'
 6. S24°00'05"W 91.01'
 7. S36°27'15"W 67.62'
 8. S22°19'W 28.31'
 9. S11°12'14"E 43.01'



260517

Lower Right:
123°18'3"W 43°17'59"N
4175875E 607652N ft