

THIS MAP WAS PREPARED FOR ASSESSMENT PURPOSE ONLY.

SW1/4 SEC.16 T.26S. R.5W. W.M.  
DOUGLAS COUNTY  
1" = 200'

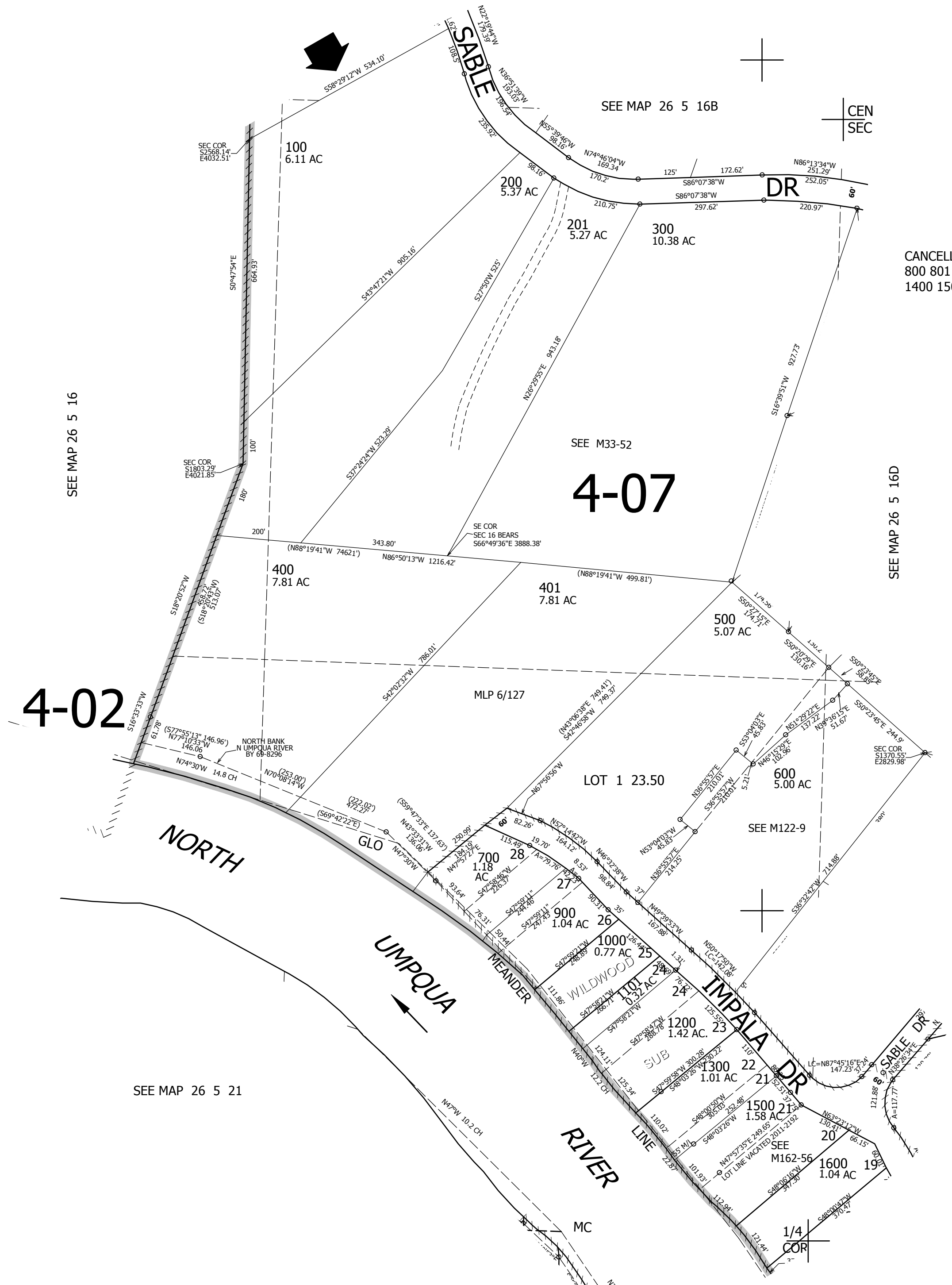
REVISED ON  
8-22-11

26 5 16C

1/4  
COR

CEN  
SEC

CANCELLED NO'S  
800 801 1100  
1400 1501



4-02

4-07

NORTH

UMPQUA RIVER

IMPALA DR

17 16  
20 21

SEE MAP 26 5 21A

26 5 16C

4,177,000