

THIS MAP WAS PREPARED FOR ASSESSMENT PURPOSE ONLY.

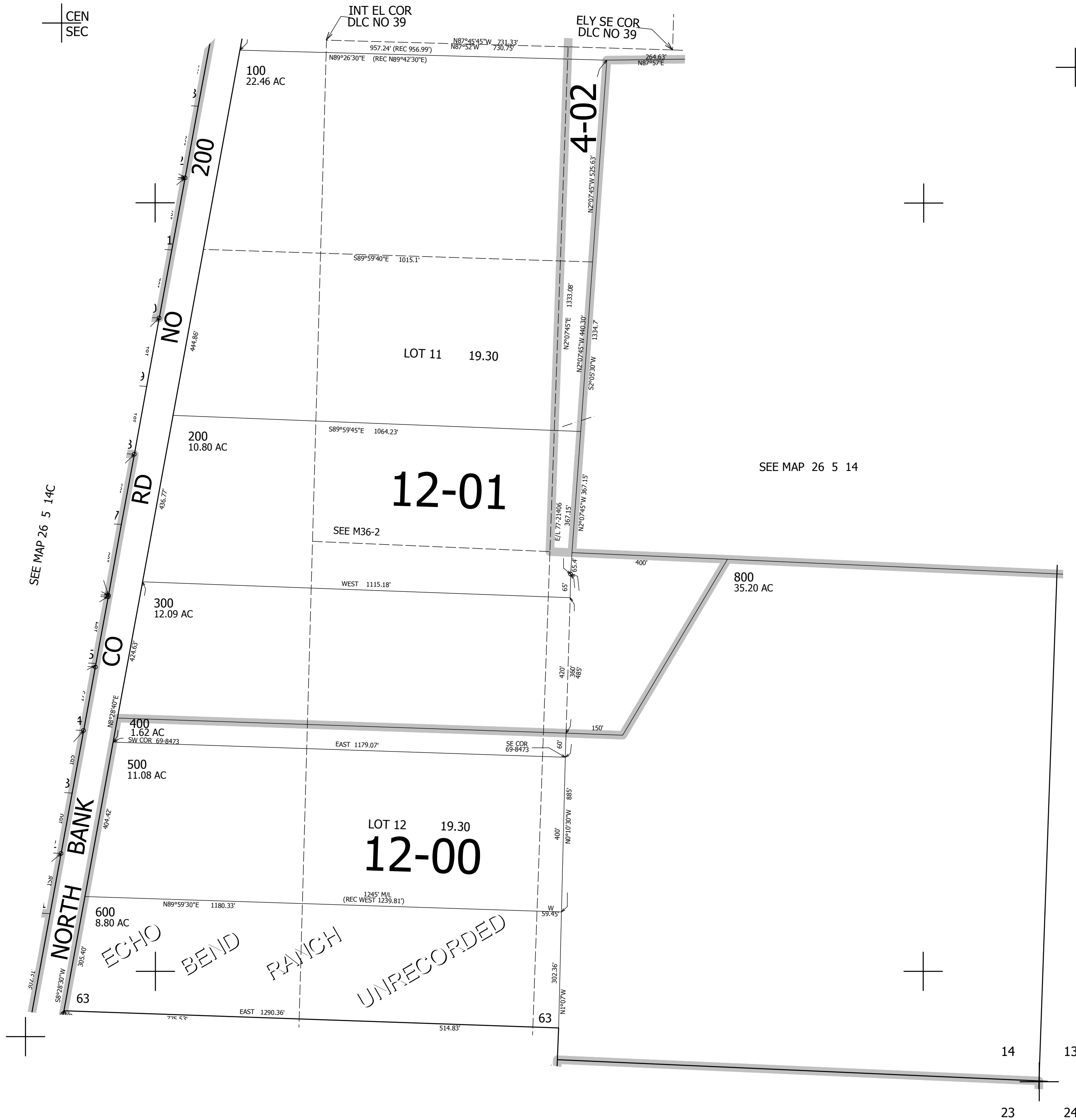
SE1/4 SEC.14 T.26S. R.5W. W.M.
DOUGLAS COUNTY

REVISED ON
5-2-13

26 5 14D

1" = 200'

SEE MAP 26 5 14A



CANCELLED NO'S
700 100M1 200M1
300M1 400M1 500M1

SEE MAP 26 5 14C

SEE MAP 26 5 14

SEE MAP 26 5 00

SEE MAP 26 5 23A

4,190,000

26 5 14D