

THIS MAP WAS PREPARED FOR ASSESSMENT PURPOSE ONLY.

Upper Left:  
123°15'47"W 43°19'1"N  
4186093E 613520N ft

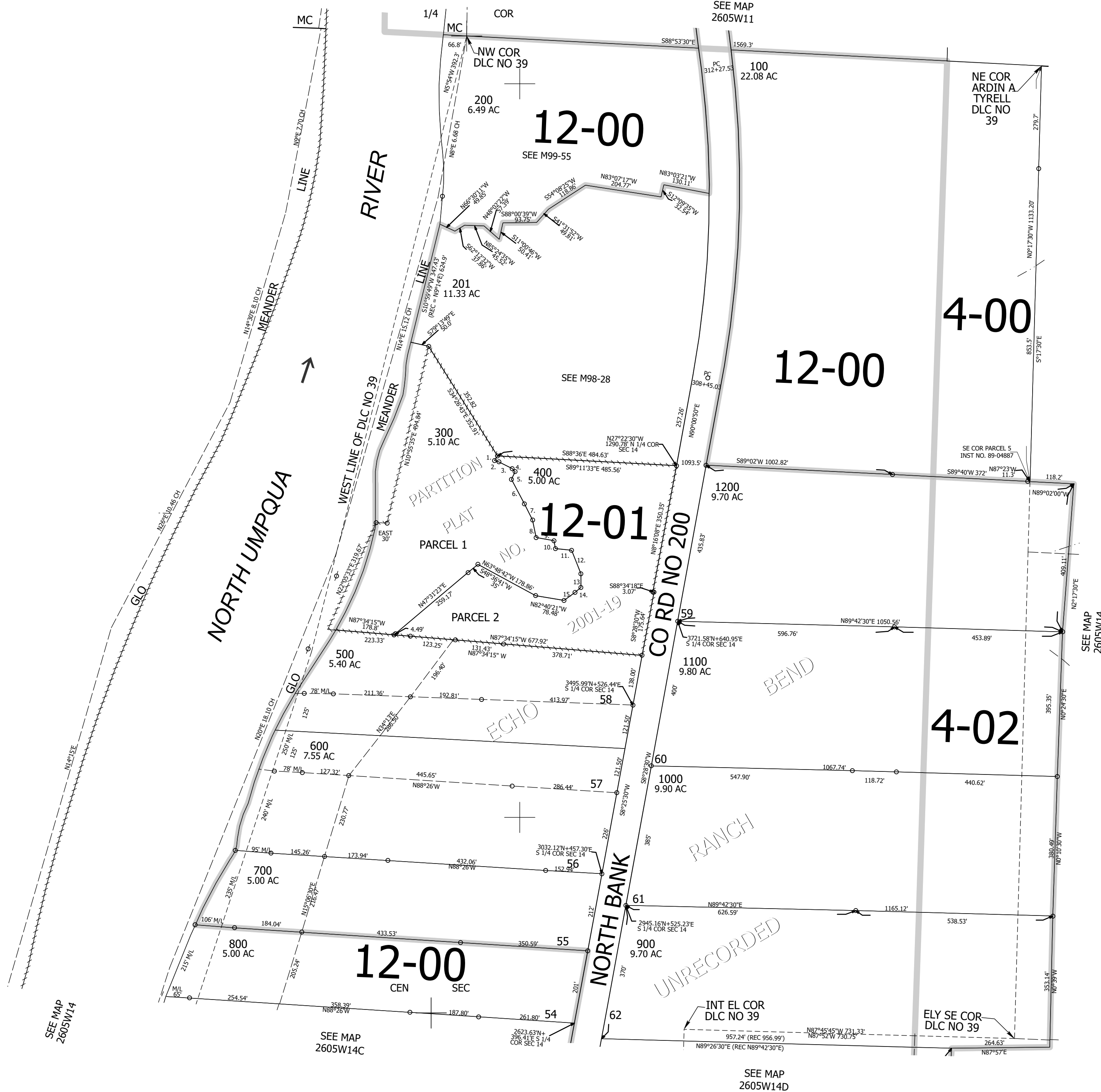
NE1/4 SEC.14 T.26S. R.05W. W.M.  
DOUGLAS COUNTY  
1" = 200'

Date Exported 2023-07-11

260514A

CANCELLED NOS:  
501 401 402  
301

- PP 2001-19
- 1. S31°56'03"W 14.84'
- 2. N75°12'46"W 12.86'
- 3. N64°53'38"W 40.22'
- 4. N47°00'47"W 11.72'
- 5. N23°56'52"E 23.2'
- 6. N30°19'53"W 75.91'
- 7. N29°06'22"W 48.99'
- 8. N13°59'17"W 48.97'
- 9. N82°17'48"W 49.14'
- 10. S11°58'42"E 22'
- 11. S86°19'07"E 44.39'
- 12. S24°08'42"E 69.1'
- 13. S2°05'22"W 37.32'
- 14. S48°31'04"W 21.19'
- 15. S51°11'32"W 36.82'



SEE MAP 2605W14

SEE MAP 2605W14C

SEE MAP 2605W14D

Lower Right:  
123°14'52"W 43°18'28"N  
4190018E 610042N ft

260514A