

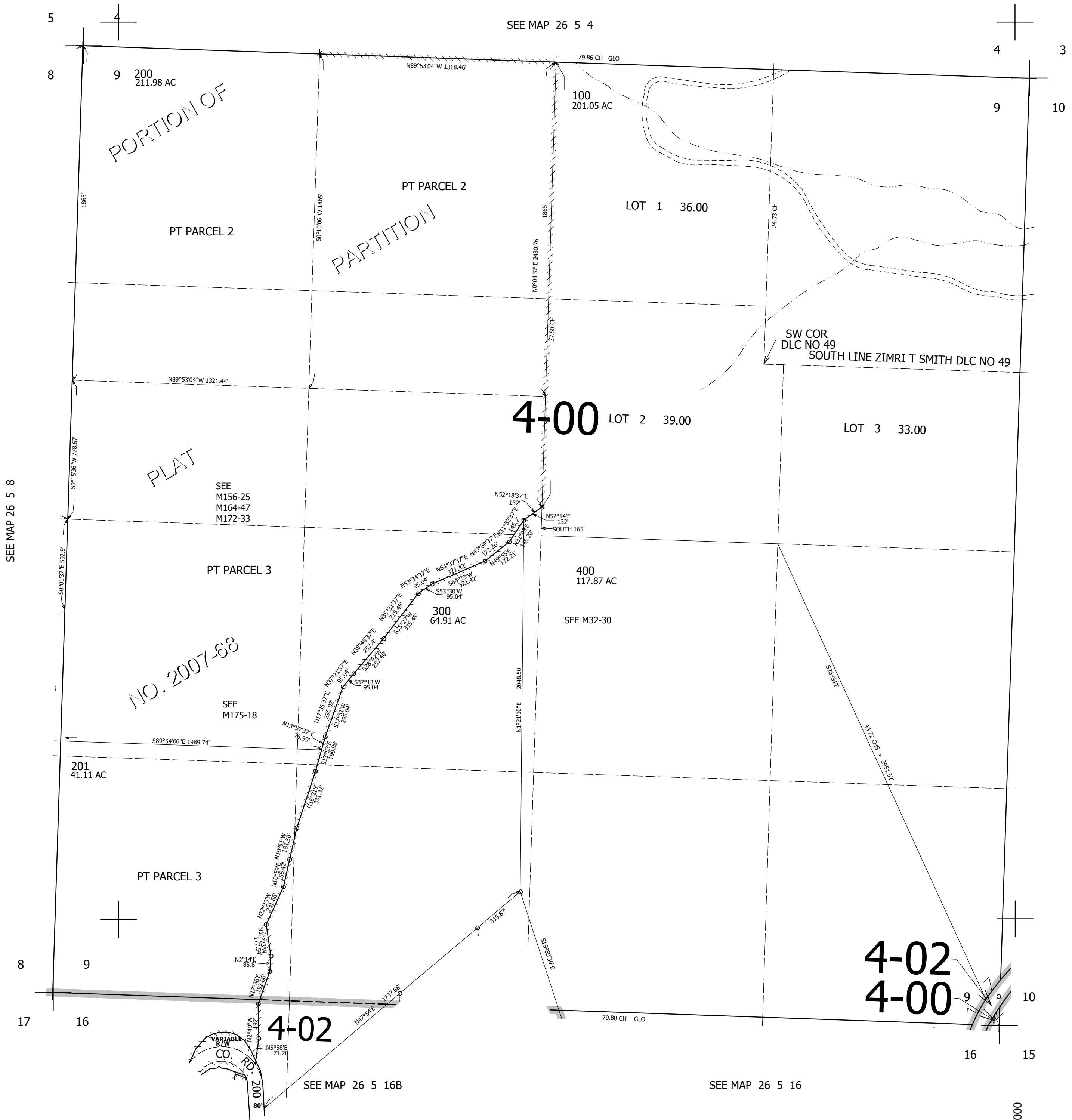
SEC.9 T.26S. R.5W. W.M.  
DOUGLAS COUNTY

REVISED ON  
2-1-21

26 5 9

1" = 400'

THIS MAP WAS PREPARED FOR  
ASSESSMENT PURPOSE ONLY.



CANCELLED NO'S  
100M1 202 203

614,000

4-02  
4-00

26 5 9