

THIS MAP WAS PREPARED FOR ASSESSMENT PURPOSE ONLY.

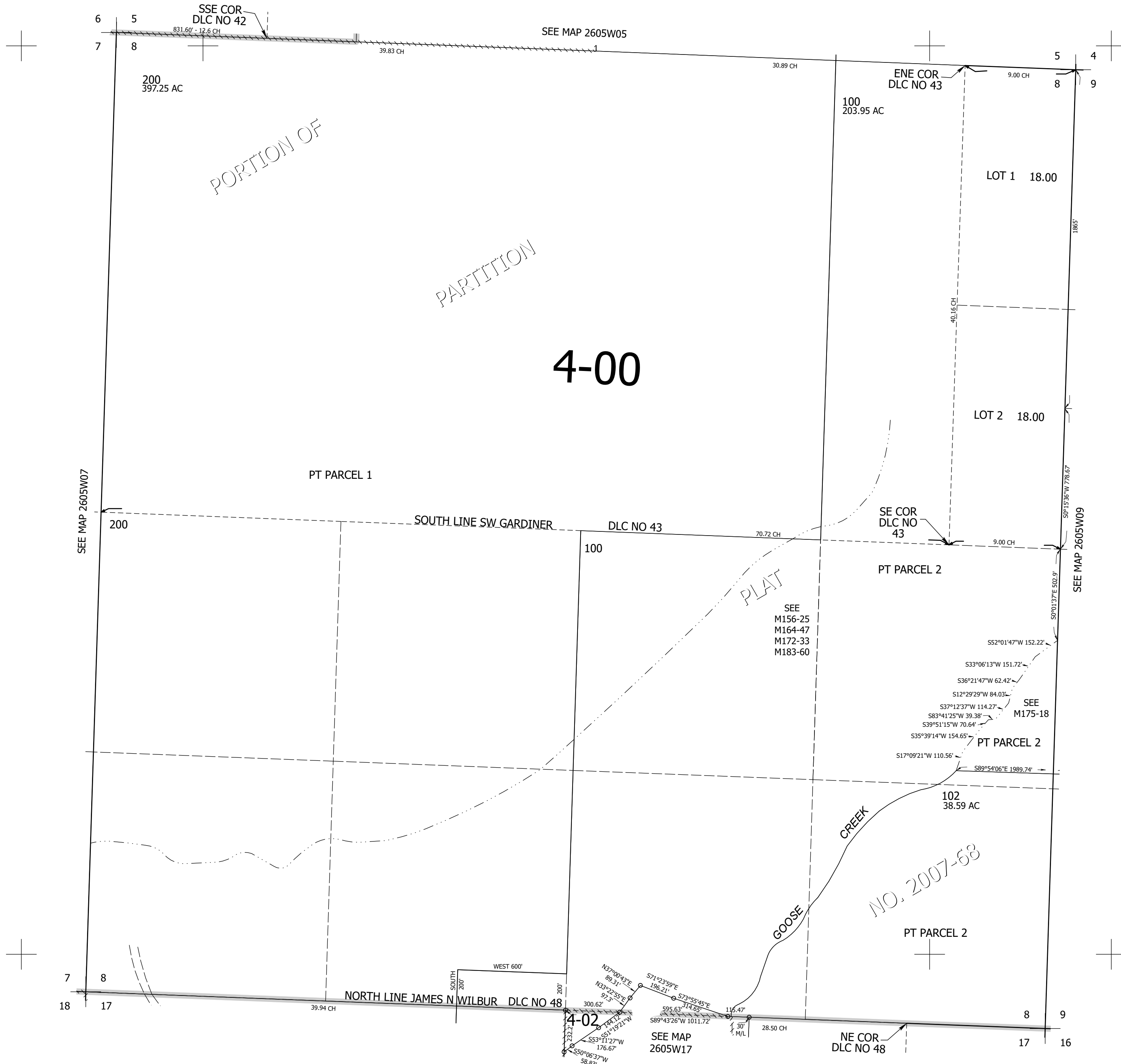
Upper Left:  
123°19'53"W 43°19'57"N  
4168150E 619789N ft

SEC.08 T.26S. R.05W. W.M.  
DOUGLAS COUNTY  
1" = 400'

Date Exported 2024-05-07

260508

CANCELLED NOS:  
101 201 103  
104



260508

Lower Right:  
123°18'3"W 43°18'50"N  
4175999E 612834N ft