

THIS MAP WAS PREPARED FOR ASSESSMENT PURPOSE ONLY.

Upper Left:
123°21'2"W 43°19'30"N
4162962E 617288N ft

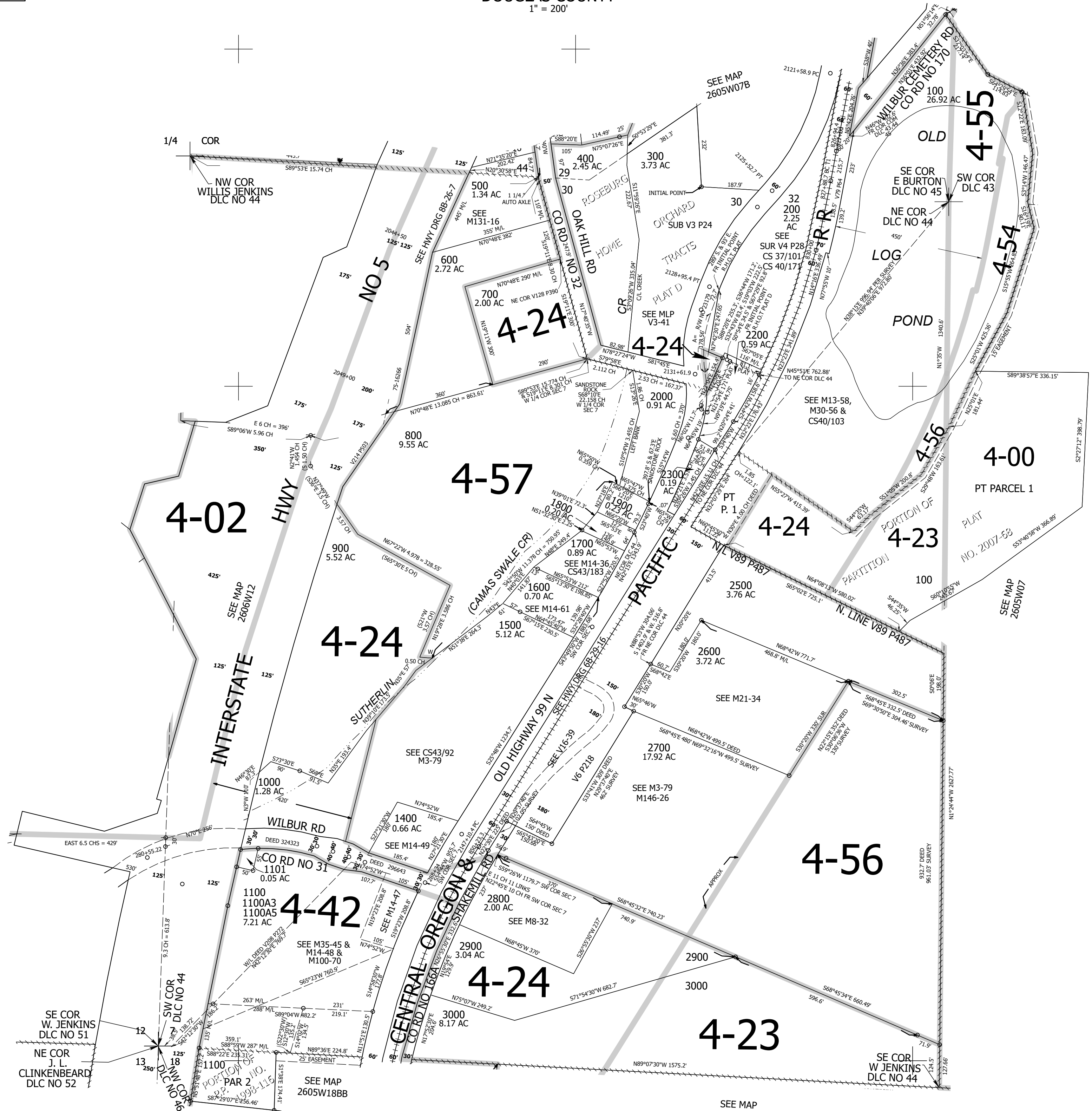
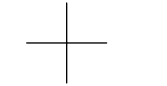
SW1/4 SEC.07 T.26S. R.05W. W.M.
DOUGLAS COUNTY
1" = 200'

Date Exported 2026-02-18

260507C
& INDEX

CANCELLED NOS:
2100 1100A1 1100A2
1100A4 2400 1200
1300

CEN SEC



1/4 COR

260507C
& INDEX

Lower Right:
123°20'7"W 43°18'56"N
4166888E 613688N ft