

THIS MAP WAS PREPARED FOR ASSESSMENT PURPOSE ONLY.

SE1/4 SEC.6 T.26S. R.5W. W.M.
DOUGLAS COUNTY

REVISED ON
1-24-20

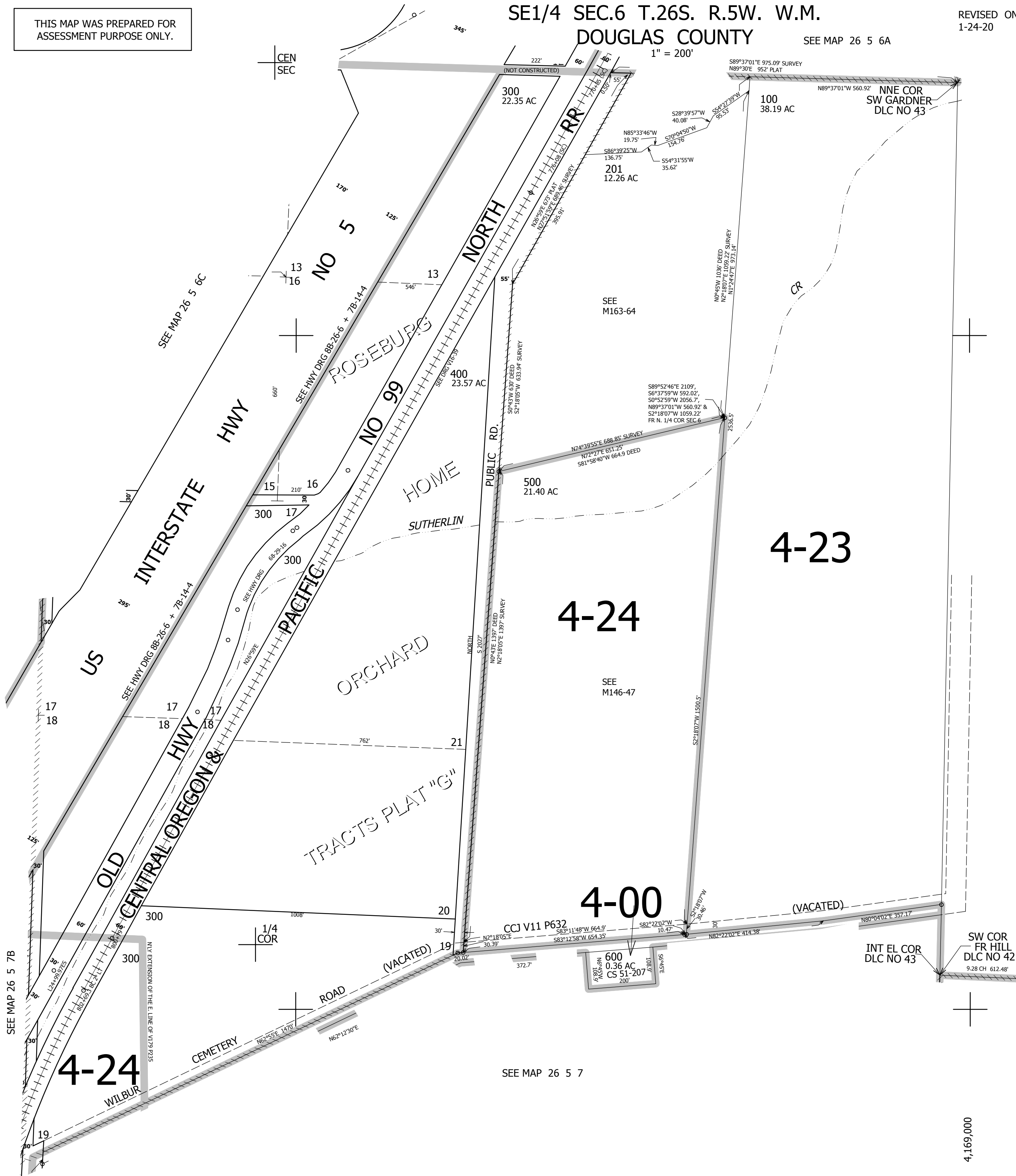
26 5 6D

SEE MAP 26 5 6A

1" = 200'

1/4
COR

CANCELLED NO'S
200



SEE MAP 26 5 5

6 5
7 8
619,000

26 5 6D