

THIS MAP WAS PREPARED FOR ASSESSMENT PURPOSE ONLY.

NE1/4 SEC.6 T.26S. R.5W. W.M.
DOUGLAS COUNTY
1" = 200'

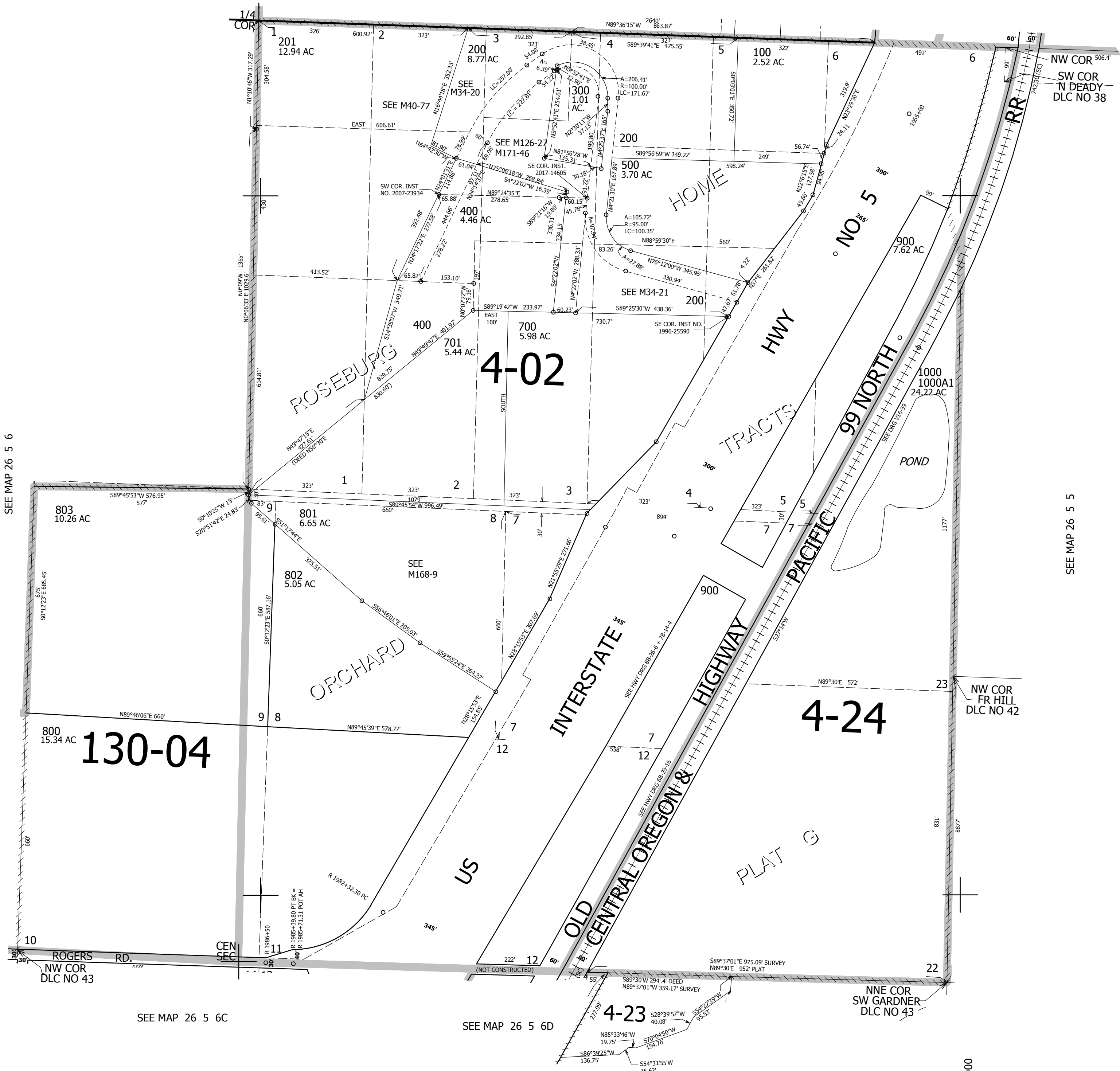
REVISED ON
6-12-18

26 5 6A

SEE MAP 25 5 31

31 32
6 5

CANCELLED NO'S
203 301 202
600 204 205
302 303



SEE MAP 26 5 6

SEE MAP 26 5 5

SEE MAP 26 5 6C

SEE MAP 26 5 6D

622,000

4,169,000

26 5 6A