

THIS MAP WAS PREPARED FOR ASSESSMENT PURPOSE ONLY.

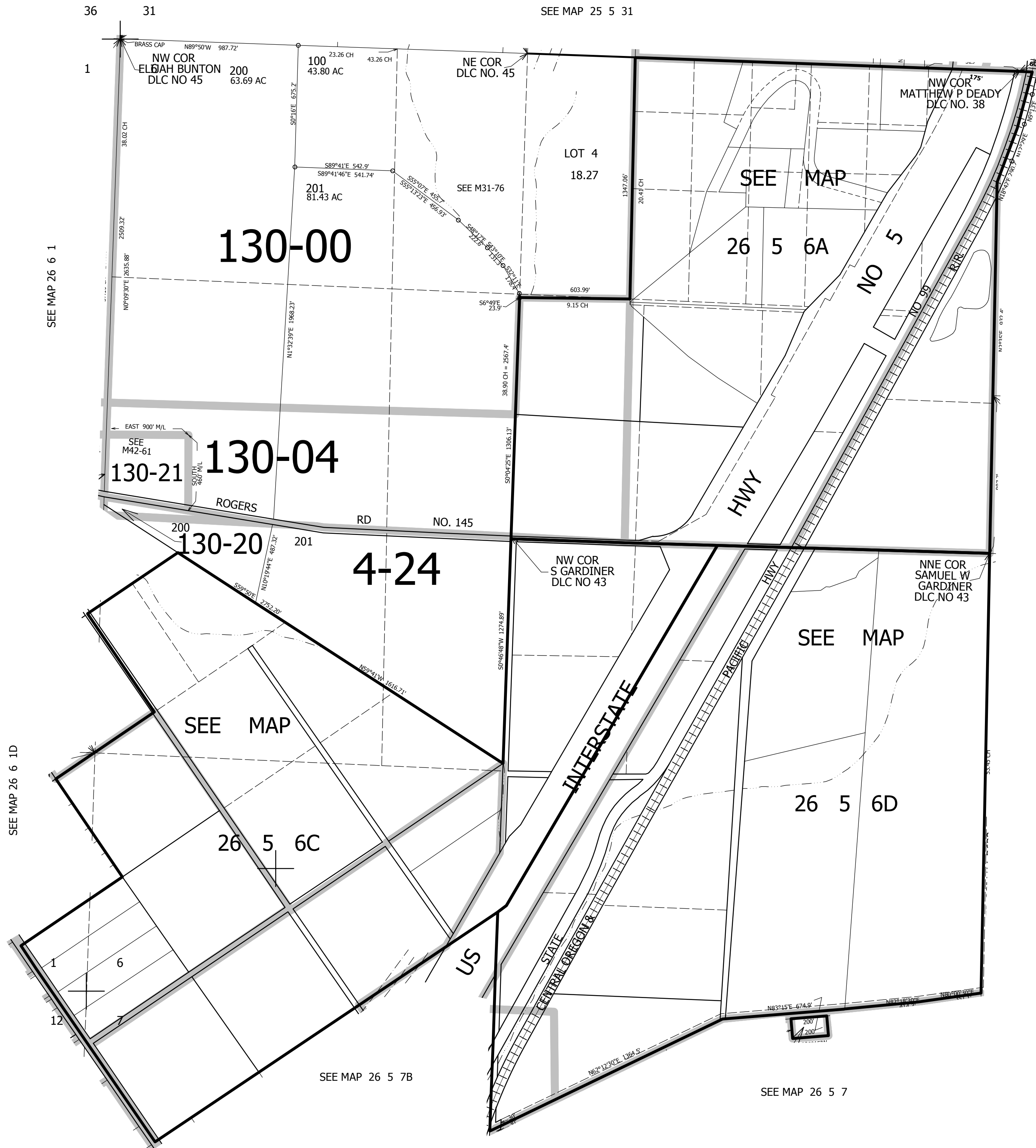
SEC.6 T.26S. R.5W. W.M.  
DOUGLAS COUNTY

1" = 400'

REVISED ON  
3-30-16

26 5 6  
& INDEX

SEE MAP 25 5 31



31 32  
6 5

CANCELLED NO'S

SEE MAP 26 5 5

620,000

6 5  
7 8

4,170,000

26 5 6  
& INDEX

SEE MAP 26 6 1

SEE MAP 26 6 1D

SEE MAP 26 5 7B

SEE MAP 26 5 7