

THIS MAP WAS PREPARED FOR ASSESSMENT PURPOSE ONLY.

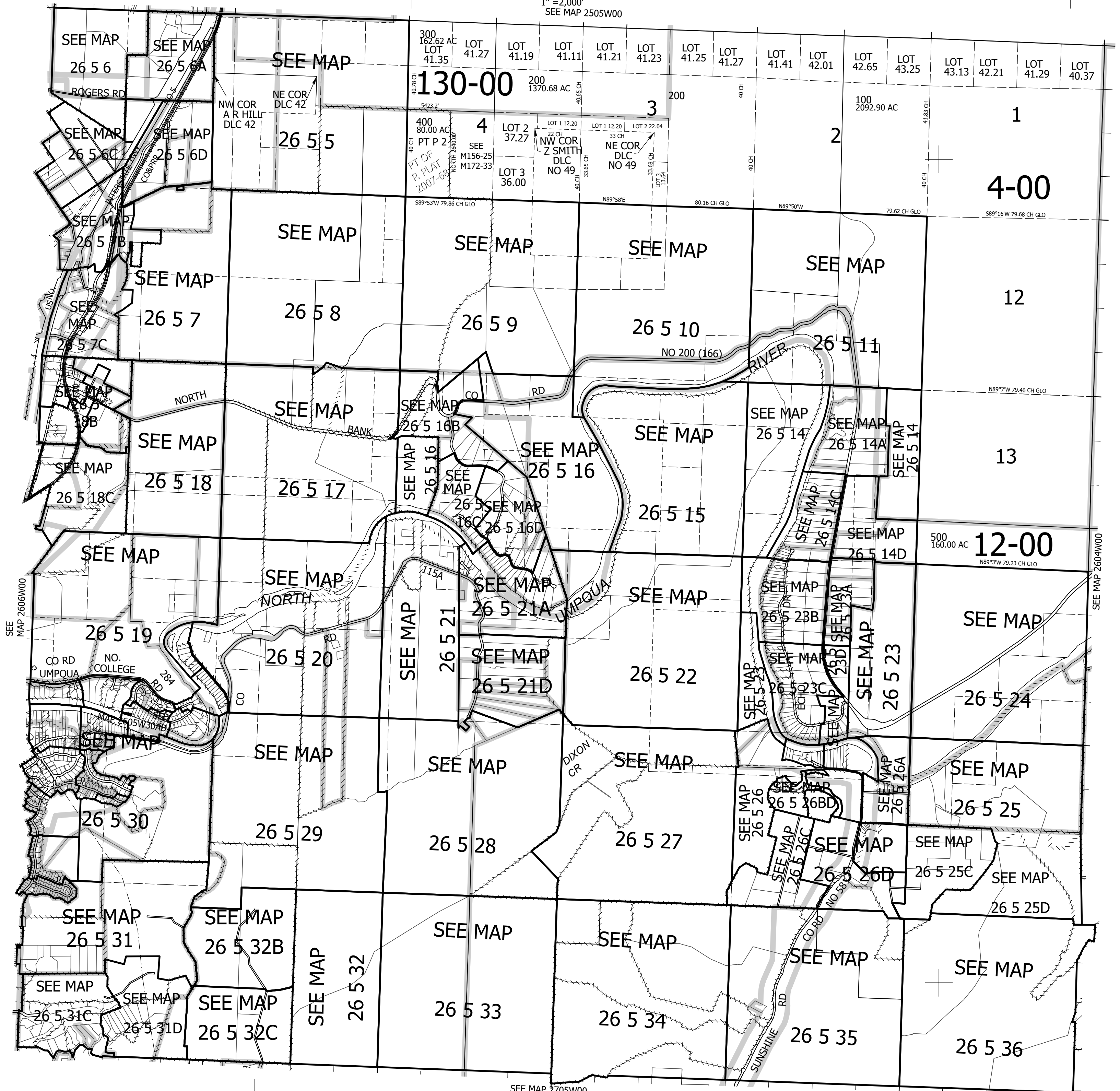
Upper Left:
123°21'46"W 43°20'50"N
4159984E 625478N ft

T.26S. R.05W. W.M.
DOUGLAS COUNTY
1" = 2,000'
SEE MAP 2505W00

Date Exported 2025-01-30

260500
& INDEX

CANCELLED NOS:
200M1



260500
& INDEX

Lower Right:
123°12'39"W 43°15'20"N
4199231E 590702N ft