

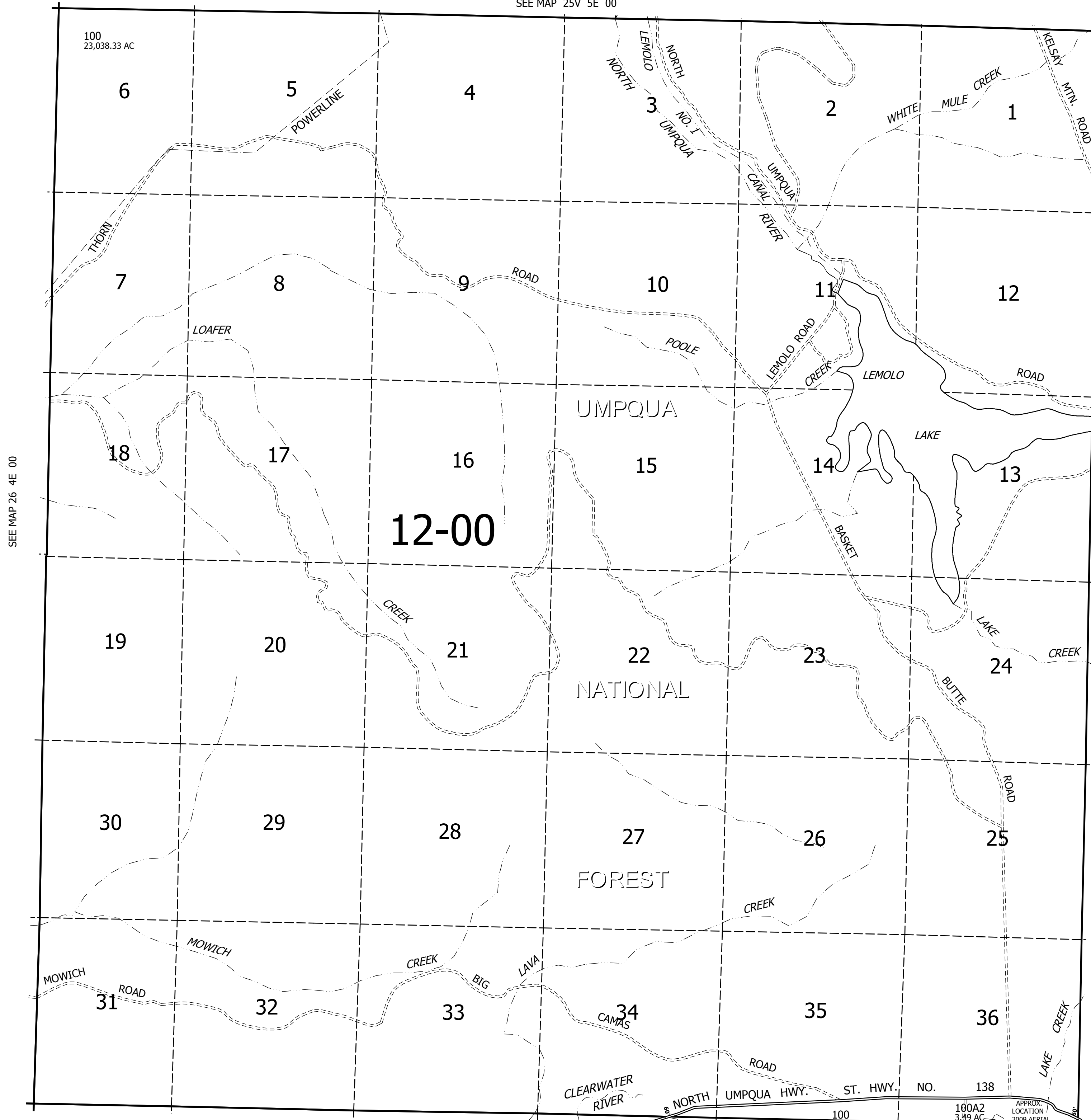
THIS MAP WAS PREPARED FOR  
ASSESSMENT PURPOSE ONLY.

T.26S. R.5E. W.M.  
DOUGLAS COUNTY

REVISED ON  
4-30-12

26 5E 00

SEE MAP 25V 5E 00 1" = 2000'



100  
23,038.33 AC

SEE MAP 26 4E 00

SEE MAP 26 5E 00

SEE MAP 27 5E 00

100A2  
3.49 AC

APPROX.  
LOCATION  
2009 AERIAL

26 5E 00