

THIS MAP WAS PREPARED FOR ASSESSMENT PURPOSE ONLY.

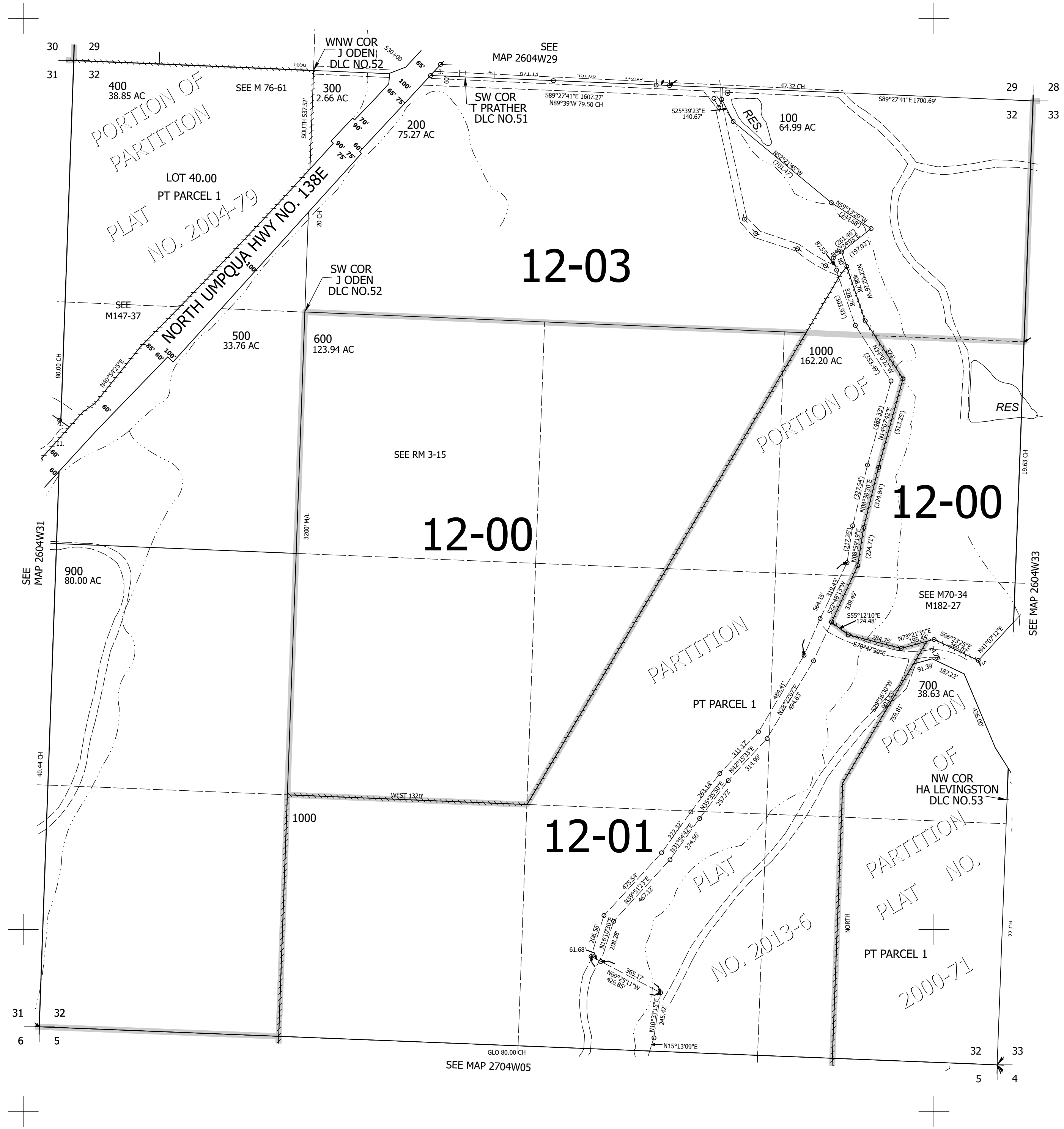
Upper Left:
123°12'47"W 43°16'27"N
4198892E 597552N ft

SEC.32 T.26S. R.04W. W.M.
DOUGLAS COUNTY
1" = 400'

Date Exported 2024-06-18

260432

CANCELLED NOS:
702 701 401
703 800



260432

Lower Right:
123°10'58"W 43°15'21"N
4206742E 590596N ft