

THIS MAP WAS PREPARED FOR ASSESSMENT PURPOSE ONLY.

NW1/4 SE1/4 SEC.31 T.26S. R.4W. W.M.  
DOUGLAS COUNTY

1" = 100'

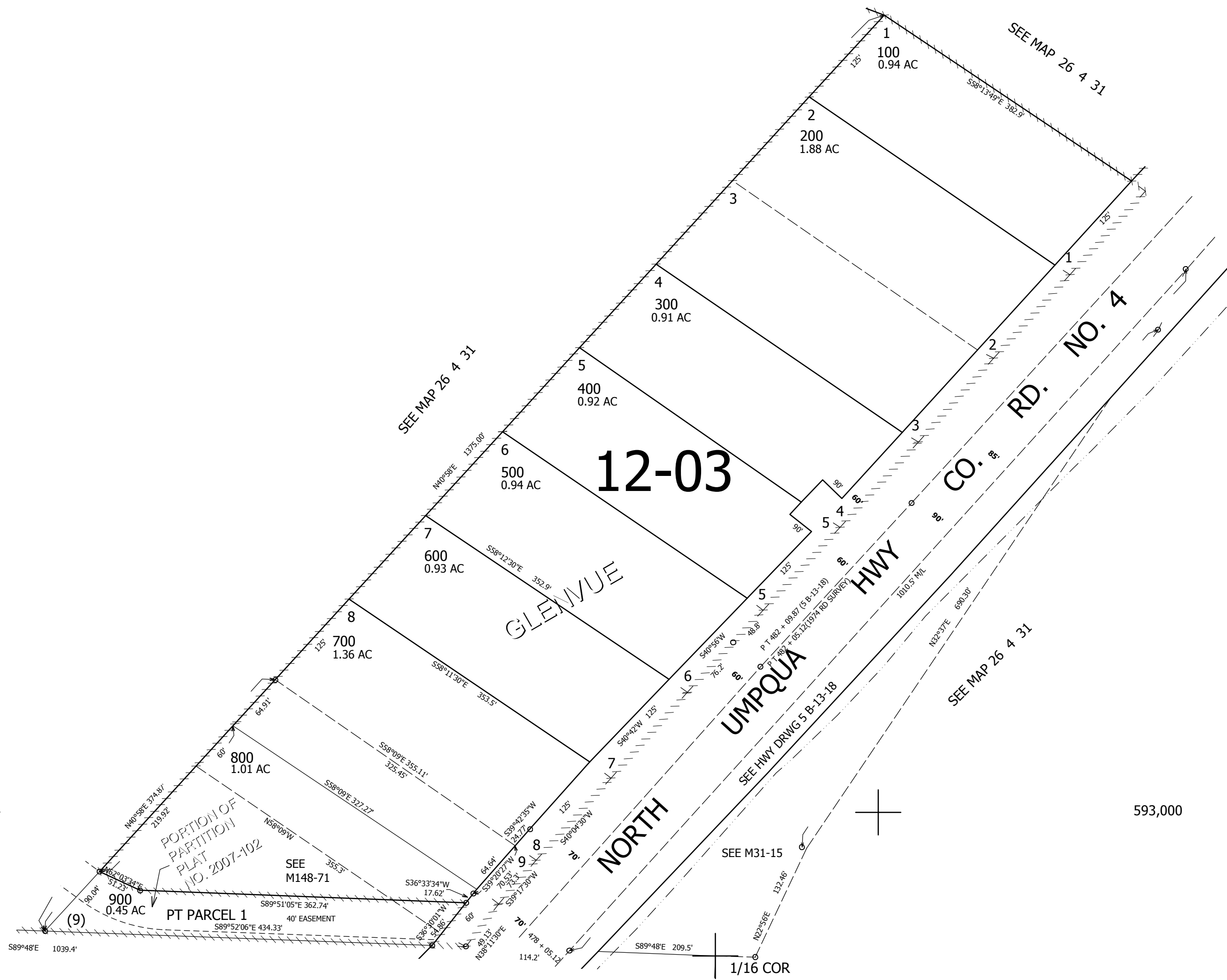
REVISED ON  
8-10-07

26 4 31DB

CANCELLED NO'S  
1000 801 901

CEN|SEC

1/16|COR



1/16|COR

SEE MAP 26 4 31

4,199,000

26 4 31DB

593,000