

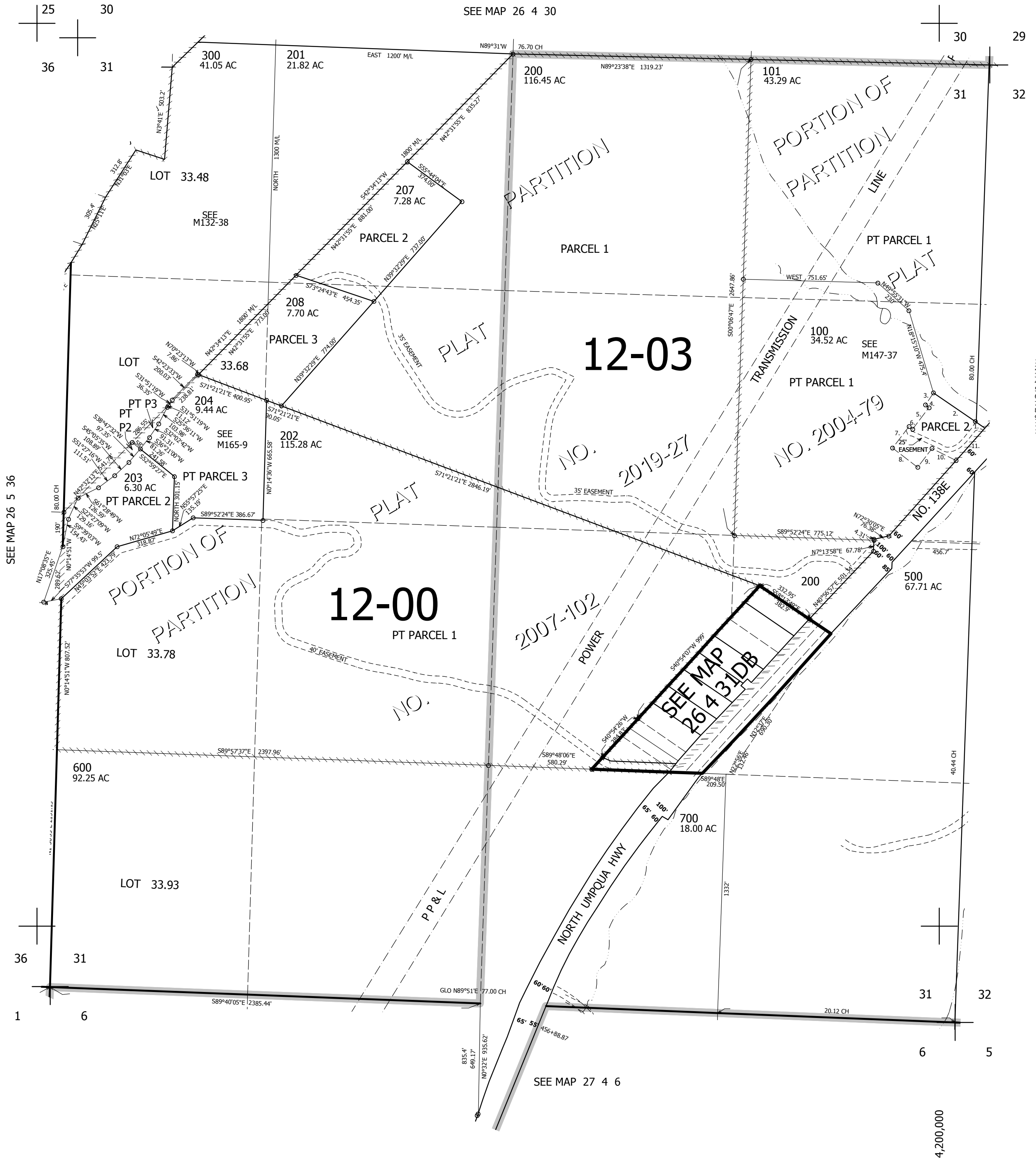
THIS MAP WAS PREPARED FOR ASSESSMENT PURPOSE ONLY.

SEC.31 T.26S. R.4W. W.M.
DOUGLAS COUNTY

1" = 400'

REVISED ON
10-15-19

26 4 31
& INDEX



SEE MAP 26 4 30

SEE MAP 26 5 36

CANCELLED NO'S
302 301 400
102 205 206
303

TAXLOT 100
1. N54°24'04"W 64.21'
2. N54°24'04"W 280.79'
3. S34°52'31"W 80'
4. S50°07'13"E 25'
5. S38°22'49"W 150'
6. N51°37'11"W 25'
7. S38°22'49"W 150'
8. S51°33'11"E 175'
9. N38°22'49"E 130'
10. S62°26'07"E 148.96'
11. N42°46'35"E 240'

SEE MAP 26 4 32

592,000

SEE MAP 27 4 6

26 4 31
& INDEX

4,200,000