

THIS MAP WAS PREPARED FOR ASSESSMENT PURPOSE ONLY.

Upper Left:
123°11'36"W 43°17'17"N
4204288E 602474N ft

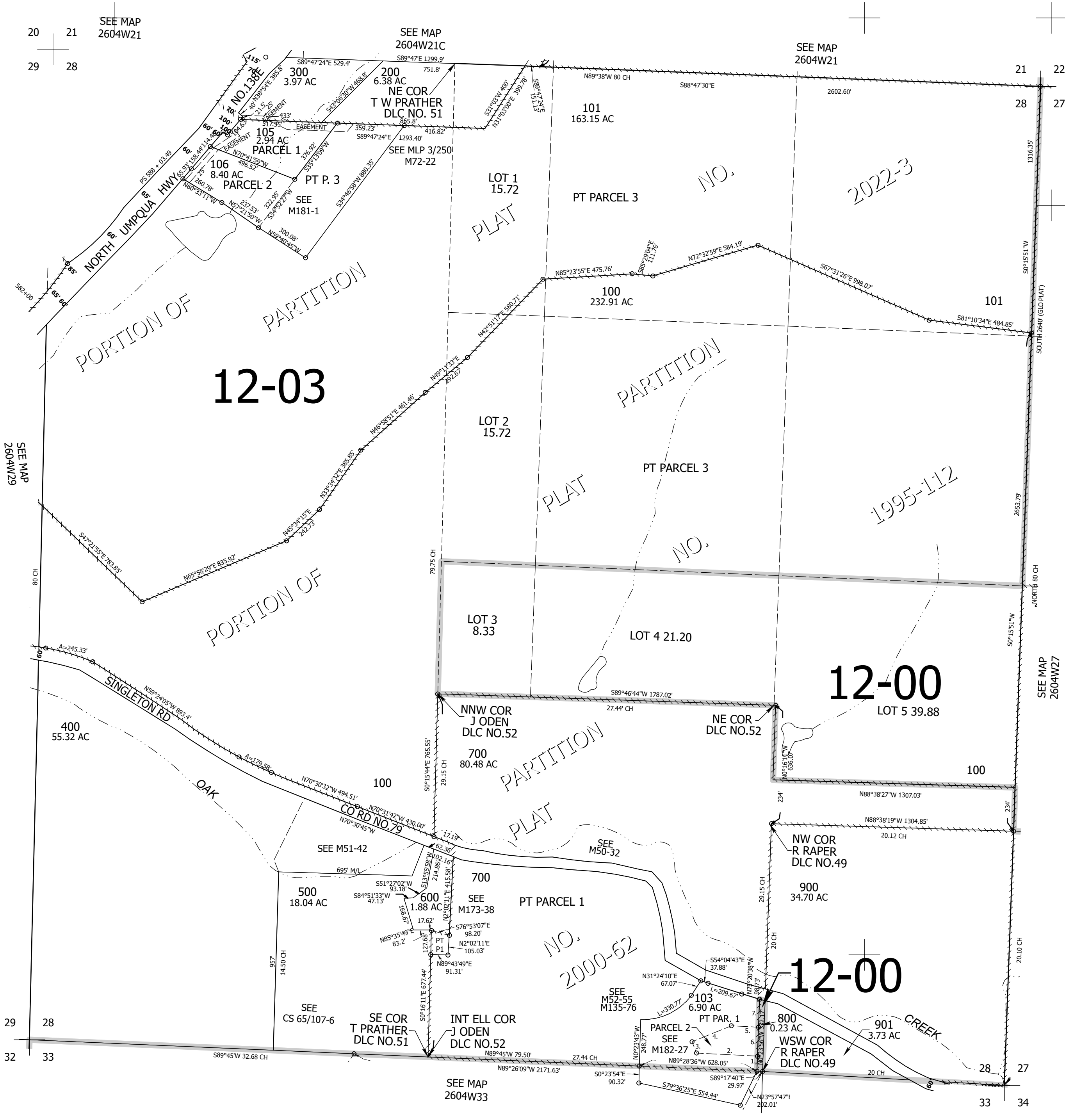
SEC.28 T.26S. R.04W. W.M.
DOUGLAS COUNTY
1" = 400'

Date Exported 2026-03-18

260428

- PP 2006-62 PARCEL 2
- 1. N0°16'11"W 80.06'
- 2. N89°21'24"W 325.62'
- 3. N24°04'18"W 65.04'
- 4. N65°44'35"E 226.61'
- 5. S89°33'15"E 144.8'
- 6. N0°16'11"W 155.01'
- 7. N0°15'11"W 110.2'

CANCELLED NOS:
102 500M1 600M1
700M1 800M1 104
701 702 703
107 108



SEE MAP
2604W21

SEE MAP
2604W21C

SEE MAP
2604W21

SEE MAP
2604W29

SEE MAP
2604W27

SEE MAP
2604W33

260428

Lower Right:
123°9'47"W 43°16'11"N
4212137E 595519N ft