

THIS MAP WAS PREPARED FOR ASSESSMENT PURPOSE ONLY.

Upper Left:
123°9'12"W 43°17'18"N
4214926E 602214N ft

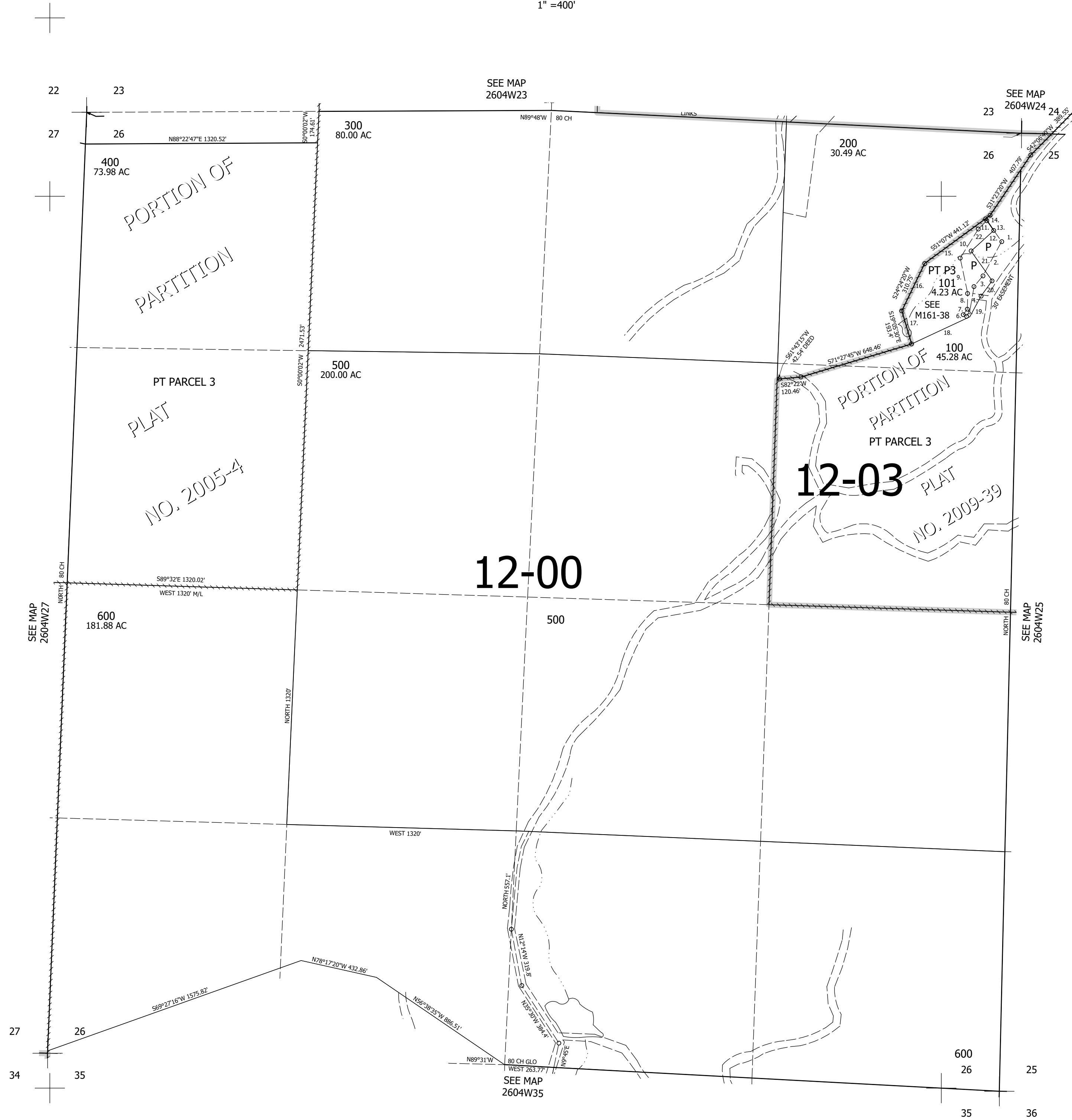
SEC.26 T.26S. R.04W. W.M.
DOUGLAS COUNTY
1" = 400'

Date Exported 2023-08-07

260426

CANCELLED NOS:
401 102 103
601 700

- TAXLOT 101
1. S72°07'37"W 745.79'
 - FR. MOST WESTERLY COR OF P.1 OF PP 2009-39
 2. S25°58'42"W 218.91'
 3. S37°15'47"W 77.87'
 4. S7°06'09"W 133.93'
 5. S25°56'56"W 39.71'
 6. N66°46'34"W 20.68'
 7. N34°08'32"E 37.89'
 8. N1°39'36"W 88.84'
 9. N14°27'57"W 202.31'
 10. N29°12'04"E 191.08'
 11. N43°01'54"E 68'
 12. S37°53'37"E 143.61'
 13. S77°28'29"W 775.5'
 - FR. MOST WESTERLY COR OF P.1 OF PP 2009-39
 14. N37°52'55"W 80'
 15. S51°02'35"W 423.43'
 16. S23°05'28"W 295.61'
 17. S19°02'52"E 193.37'
 18. N62°23'30"E 360.89'
 19. N25°38'53"E 132.33'
 20. N33°29'18"E 105.42'
 21. N37°54'26"W 205.05'
 22. N45°05'37"E 172.2'



260426

Lower Right:
123°7'23"W 43°16'12"N
4222775E 595259N ft