

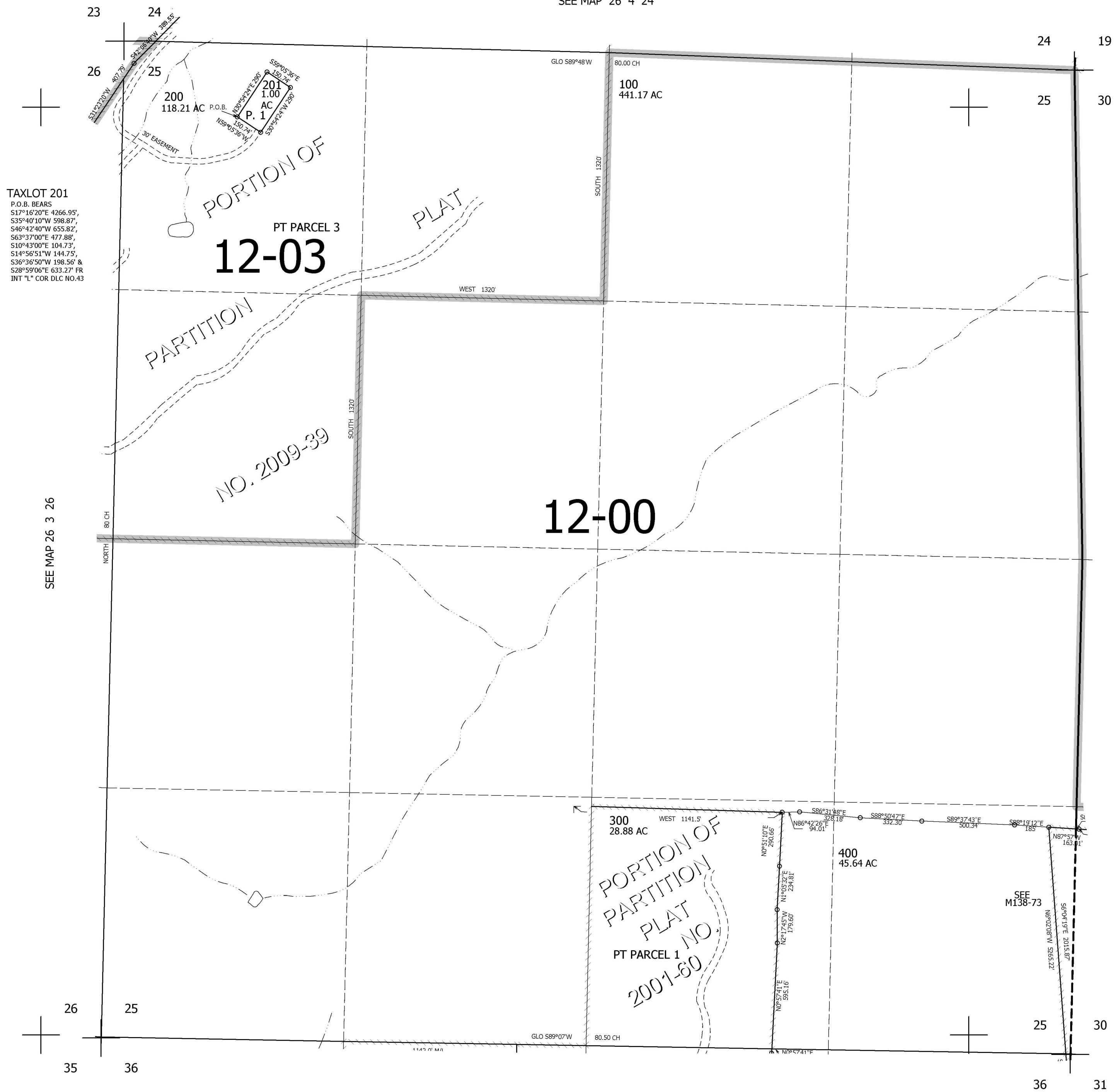
THIS MAP WAS PREPARED FOR  
ASSESSMENT PURPOSE ONLY.

SEC.25 T.26S. R.4W. W.M.  
DOUGLAS COUNTY  
1" = 400'

REVISED ON  
4-16-10

26 4 25

SEE MAP 26 4 24



TAXLOT 201  
P.O.B. BEARS  
S17°16'20"E 4266.95',  
S35°40'10"W 598.87',  
S46°42'40"W 655.82',  
S63°37'00"E 477.88',  
S10°43'00"E 104.73',  
S14°56'51"W 144.73',  
S36°36'50"W 198.56' &  
S28°59'06"E 633.27' FR  
INT "L" COR DLC NO.43

SEE MAP 26 3 26

CANCELLED NO'S  
501 502 500  
503 202

SEE MAP 26 3 30

596,000

SEE MAP 26 4 36

4,226,000

26 4 25