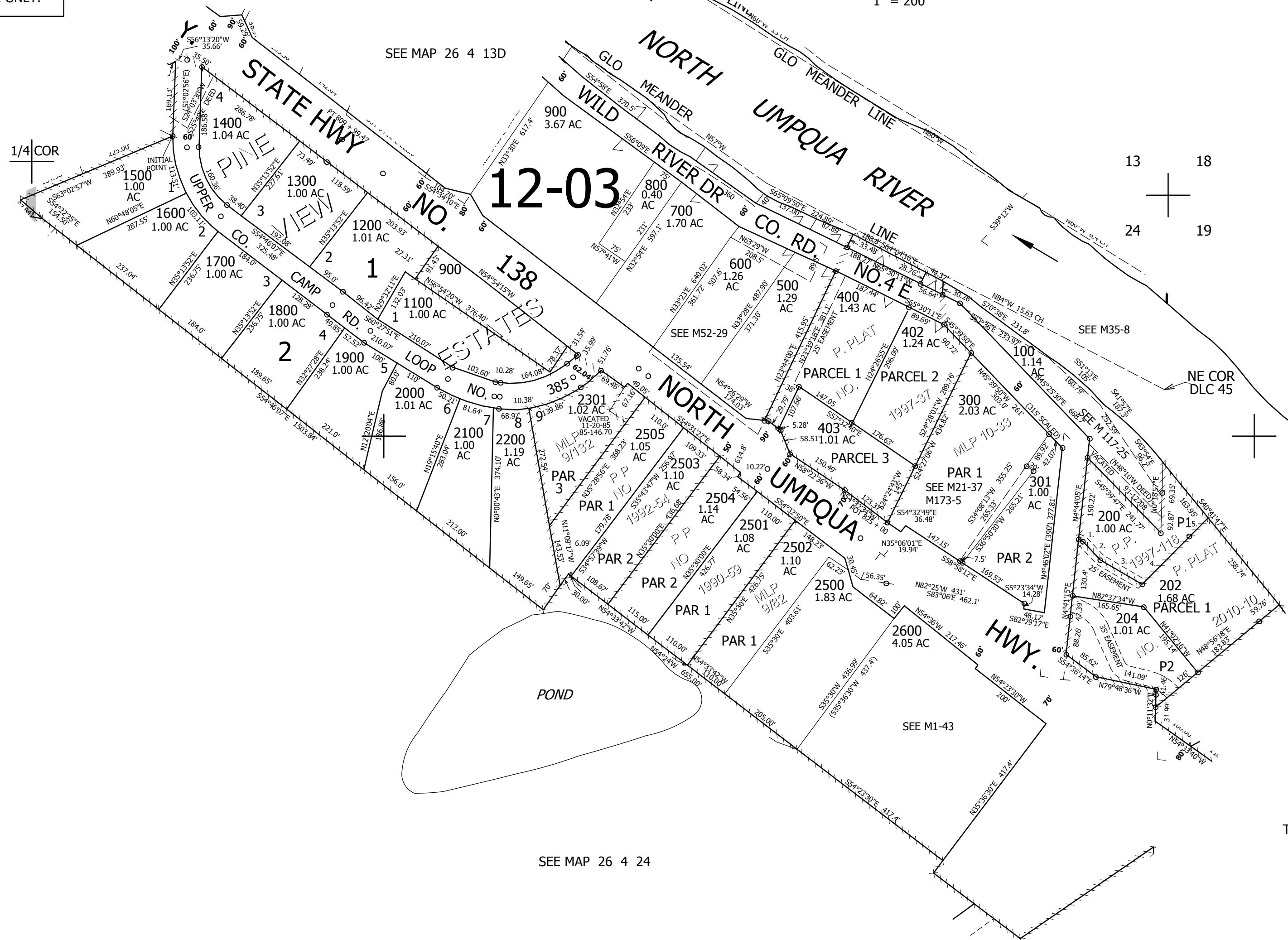


1" = 200'

THIS MAP WAS PREPARED FOR  
ASSESSMENT PURPOSE ONLY.



13 18  
24 19

CANCELLED NO'S  
1000 201 2401  
401 2300 2400  
203 200M1 302

SEE MAP 26 3 19B

SEE MAP 26 4 24

TAXLOTS 200 & 202  
1. S66°03'19"E 10.83'  
2. S44°40'47"E 58.39'  
3. S61°27'07"E 111.29'  
4. N43°17'58"E 154.59'  
5. N43°17'58"E 60.69'

CEN SEC

604,000

1/4 COR

4,227,000