

THIS MAP WAS PREPARED FOR ASSESSMENT PURPOSE ONLY.

Upper Left:  
123°9'14"W 43°18'10"N  
4214958E 607509N ft

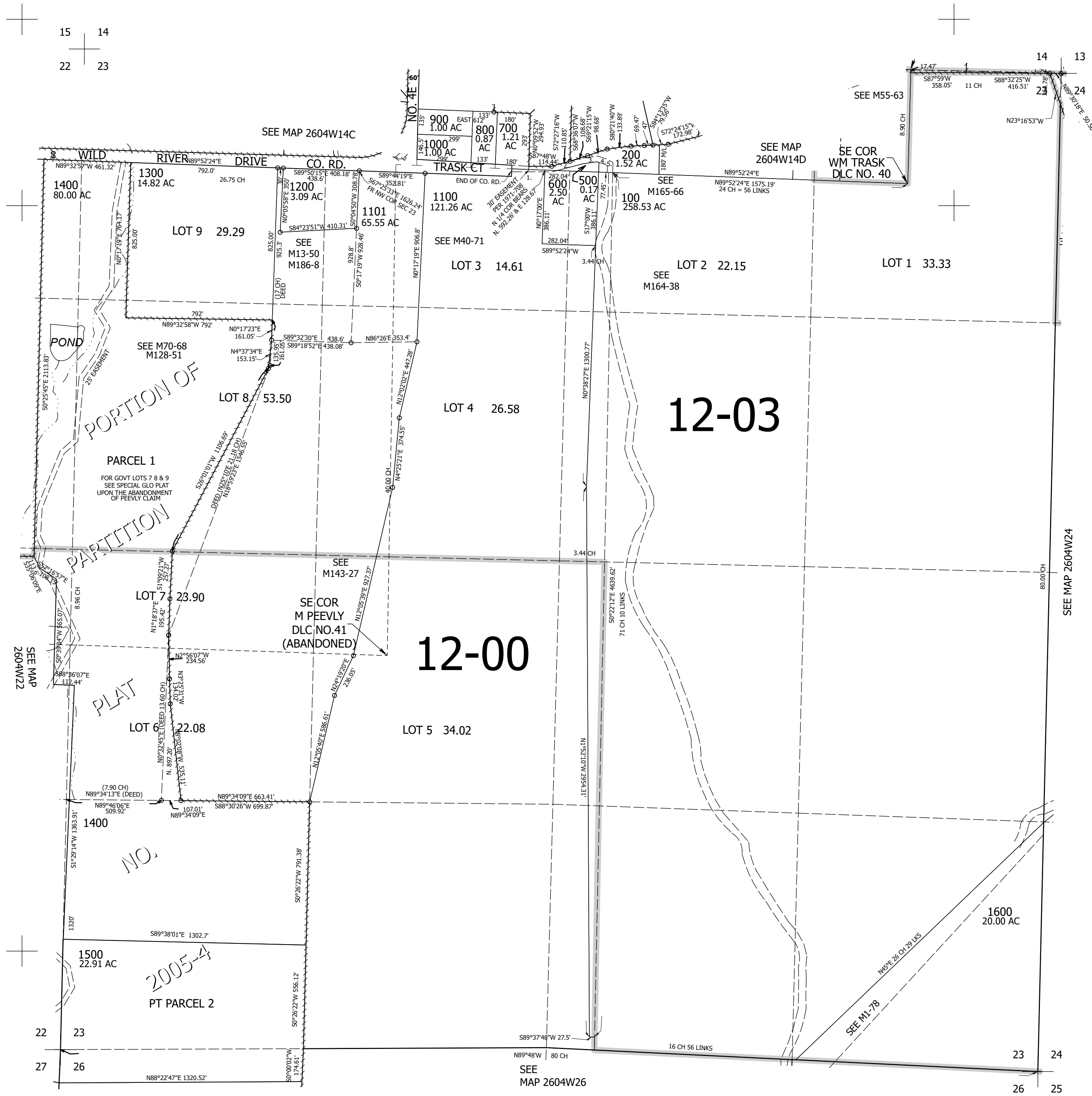
SEC.23 T.26S. R.04W. W.M.  
DOUGLAS COUNTY  
1" = 400'

Date Exported 2025-09-11

260423

- C/L 30' EASEMENT PER 1971-708
- 1. N87°48'E 200'
- 2. N72°44'E 167.7'
- 3. N80°20'E 82'
- 4. N74°00'E 50'
- 5. S61°00'E 50'

- CANCELLED NOS:
- 101 1401 1102
- 1103 1402 1501
- 1502 1104 301
- 401 300 400
- 1201



15 14  
22 23

14 13  
23 24

22 23  
27 26

23 24  
26 25

260423

Lower Right:  
123°7'25"W 43°17'4"N  
4222807E 600554N ft