

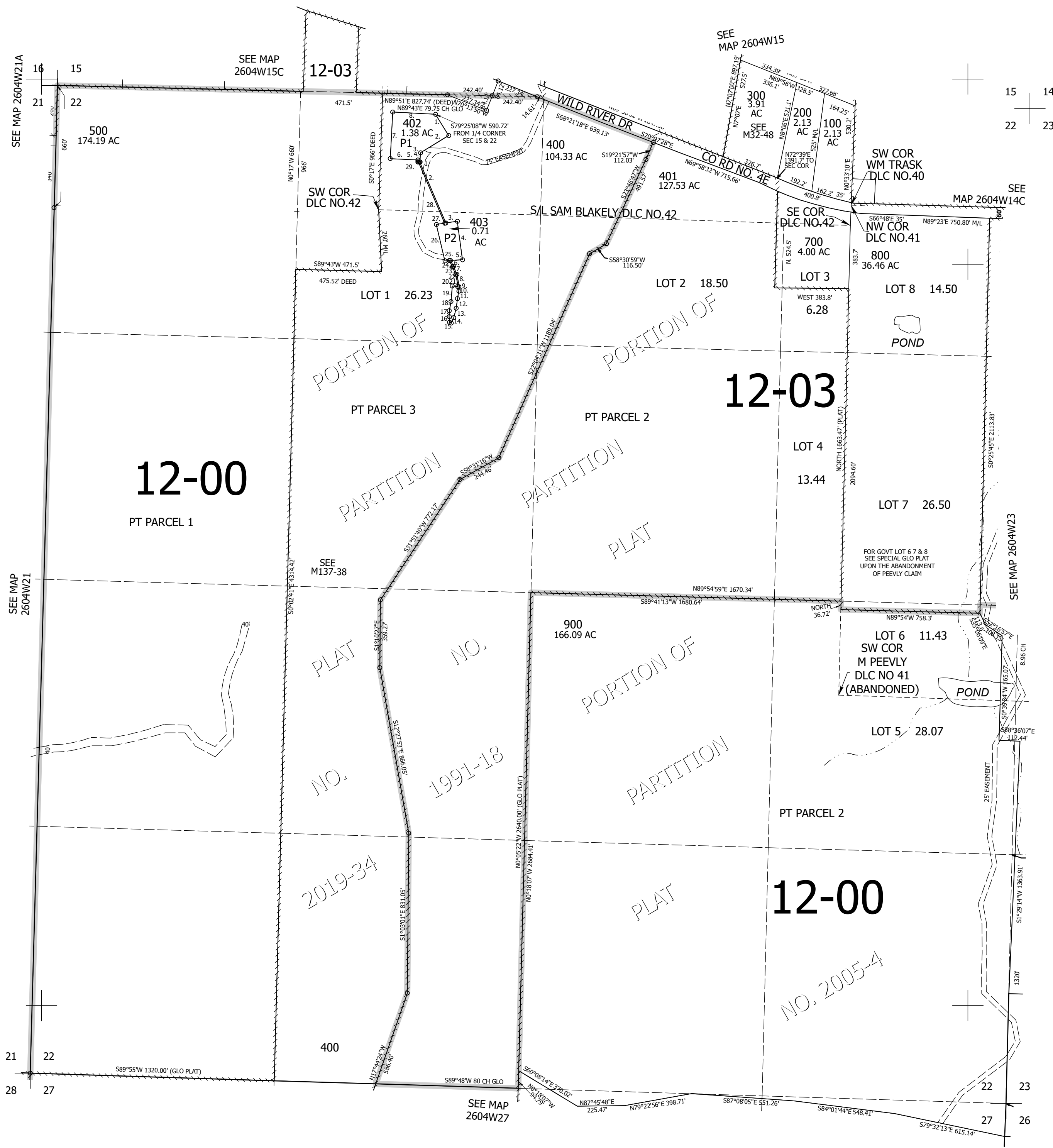
THIS MAP WAS PREPARED FOR ASSESSMENT PURPOSE ONLY.

Upper Left:
123°10'25"W 43°18'12"N
4209717E 607805N ft

SEC.22 T.26S. R.04W. W.M.
DOUGLAS COUNTY
1" = 400'

- PARCEL 402
1. S32°59'19"E 135.00'
 2. S57°10'06"W 177.79'
 3. S1°23'41"W 50.00'
 4. N88°36'19"W 12'
 5. N1°23'41"E 10.00'
 6. N88°36'19"W 149.31'
 7. N1°24'42"E 251.41'
 8. S88°36'19"E 232.00'

- PARCEL 403
1. N88°36'19"W 2.38'
 - TO TRUE P.O.B.
 2. S24°47'22"E 358.42'
 3. N79°37'12"E 62.74'
 4. S9°10'12"E 209.97'
 5. S84°47'33"W 65.34'
 6. S28°08'03"E 35.88'
 7. S24°29'46"E 46.87'
 8. S13°28'09"E 50.62'
 9. S3°47'37"E 16.76'
 10. S0°27'12"E 24.49'
 11. S8°27'32"W 40.88'
 12. S6°47'11"W 51.46'
 13. S12°51'53"W 52.73'
 14. S23°07'19"W 31.85'
 15. N66°52'41"W 10.00'
 16. N5°37'18"W 30.00'
 17. N0°11'11"E 32.00'
 18. N8°36'58"E 50.00'
 19. N3°00'42"E 84.42'
 20. S85°35'22"E 30.30'
 21. N3°47'13"W 15.39'
 22. N13°28'09"W 49.53'
 23. N24°29'46"W 46.10'
 24. N28°08'03"W 38.23'
 25. S84°47'33"W 23.29'
 26. N14°48'08"W 201.95'
 27. N79°37'12"E 45.83'
 28. N24°47'22"W 359.83'
 29. S88°36'19"E 6.69'



12-00

12-03

12-00