

THIS MAP WAS PREPARED FOR ASSESSMENT PURPOSE ONLY.

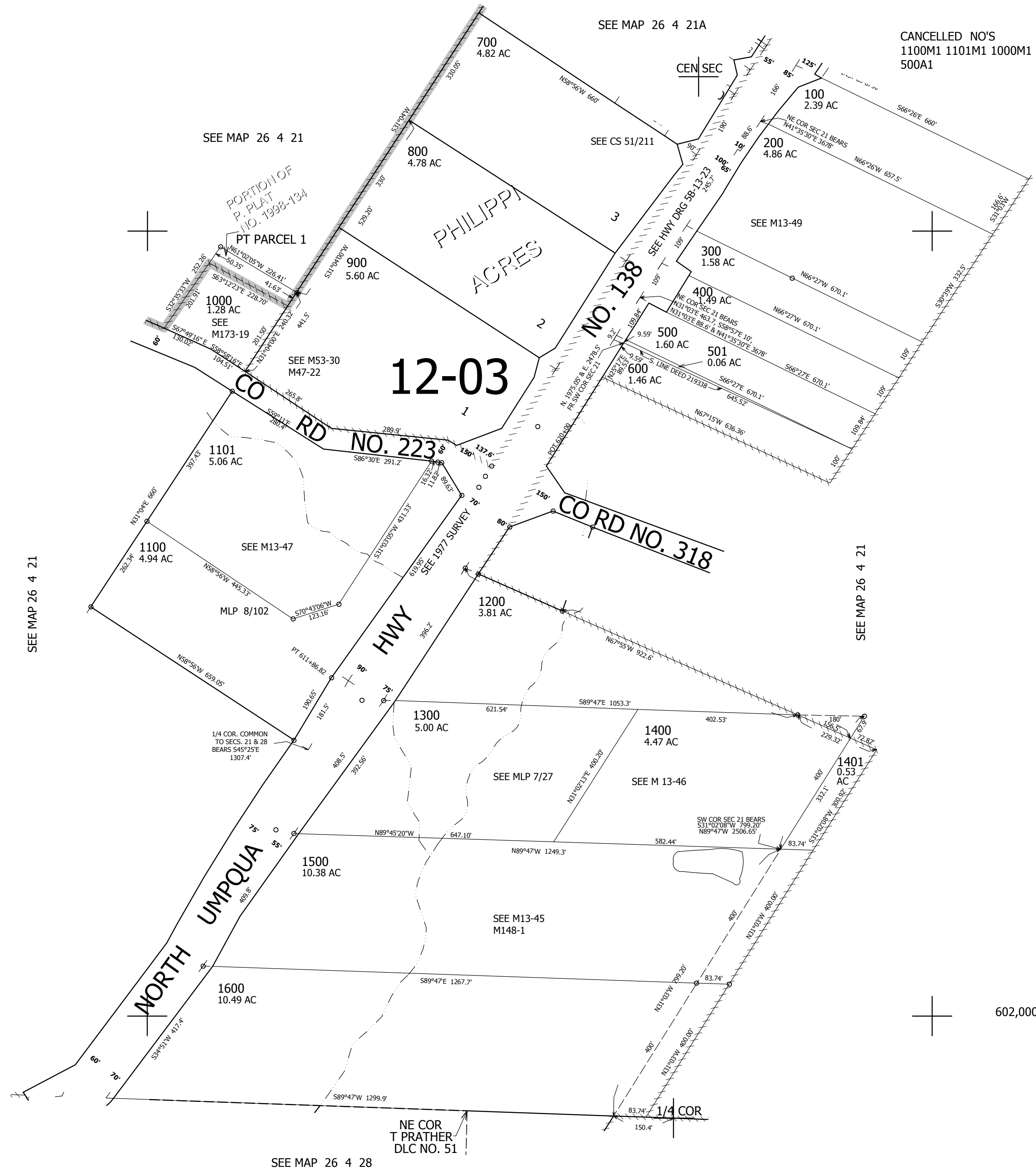
SW1/4 SEC.21 T.26S. R.4W. W.M.
DOUGLAS COUNTY
1" = 200'

REVISED ON
4-19-17

26 4 21C

1/4 COR

CANCELLED NO'S
1100M1 1101M1 1000M1
500A1



20 21
29 28

602,000

SEE MAP 26 4 28

4,207,000

26 4 21C