

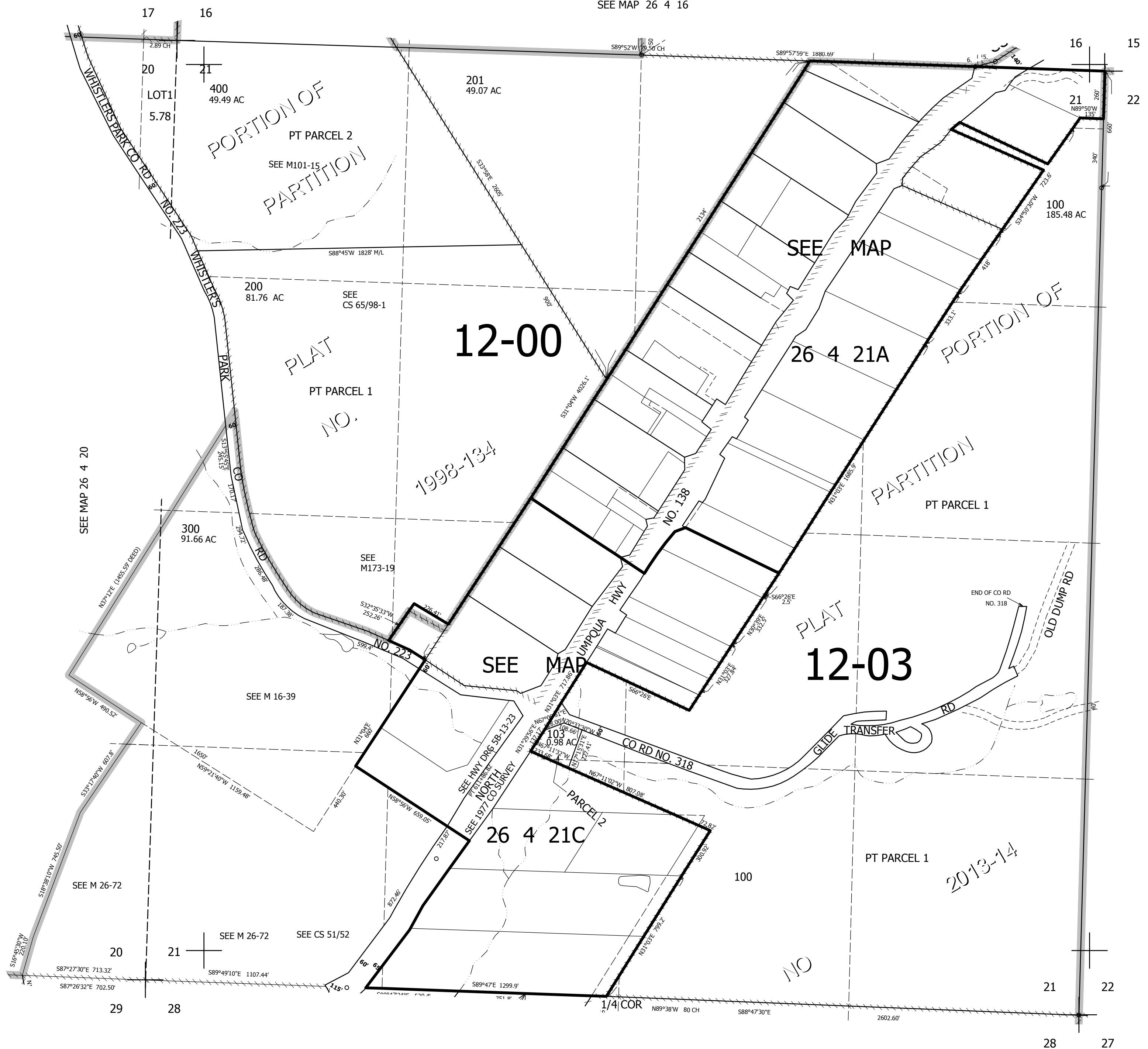
THIS MAP WAS PREPARED FOR  
ASSESSMENT PURPOSE ONLY.

SEC.21 T.26S. R.4W. W.M.  
DOUGLAS COUNTY

1" = 400'

REVISED ON  
4-19-17

26 4 21  
& INDEX



CANCELLED NO'S  
300M1 200M1 201M1  
101 102 202 203

SEE MAP 26 4 22

602,000

SEE MAP 26 4 28

26 4 21  
& INDEX

4,206,000