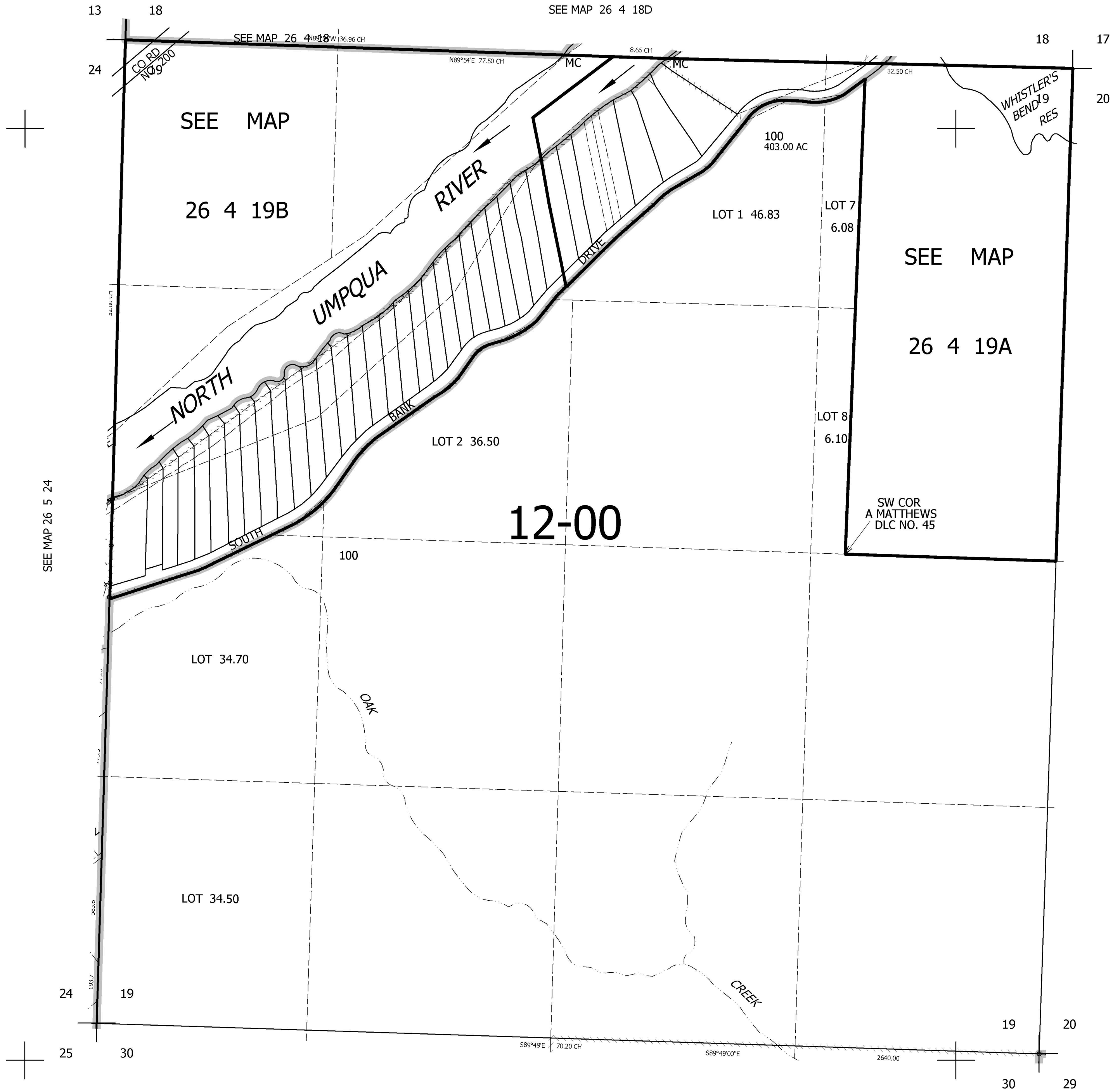


THIS MAP WAS PREPARED FOR ASSESSMENT PURPOSE ONLY.

SEC.19 T.26S. R.4W. W.M.
DOUGLAS COUNTY
1" = 400'

REVISED ON



CANCELLED NO'S
100M1

SEE MAP 26 4 20

602,000

SEE MAP 26 4 30

4,200,000