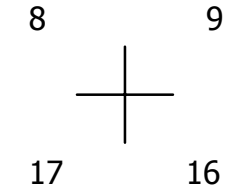
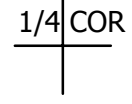


THIS MAP WAS PREPARED FOR ASSESSMENT PURPOSE ONLY.

NE1/4 SEC.17 T.26S. R.4W. W.M. DOUGLAS COUNTY
1" = 200'

REVISED ON 7-15-20

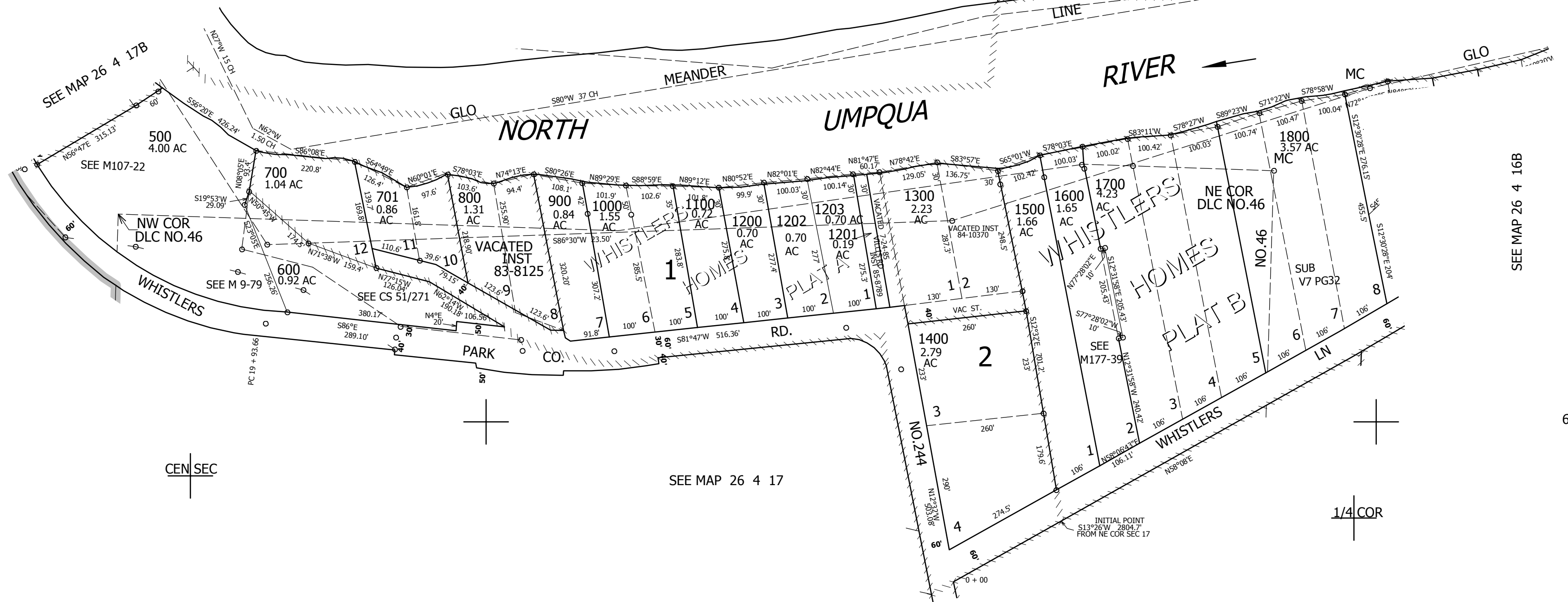
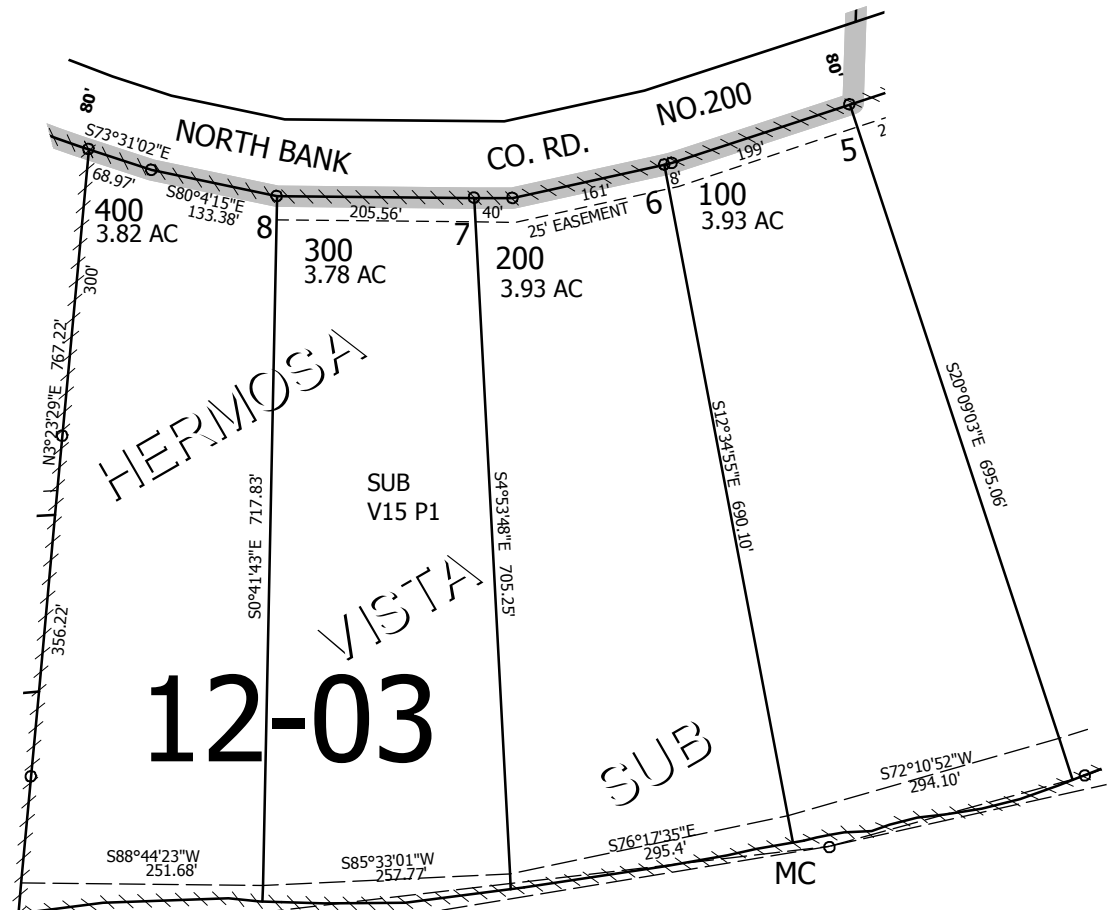
26 4 17A



CANCELLED NO'S 500M1 600M1 1701

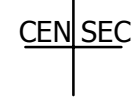
SEE MAP 26 4 17

SEE MAP 26 4 17

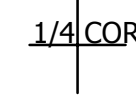


SEE MAP 26 4 16B

610,000



SEE MAP 26 4 17



4,204,000

26 4 17A