

THIS MAP WAS PREPARED FOR ASSESSMENT PURPOSE ONLY.

Upper Left:
123°11'27"W 43°19'2"N
4205274E 613027N ft

NW1/4 SEC.16 T.26S. R.04W. W.M.
DOUGLAS COUNTY
1" = 200'

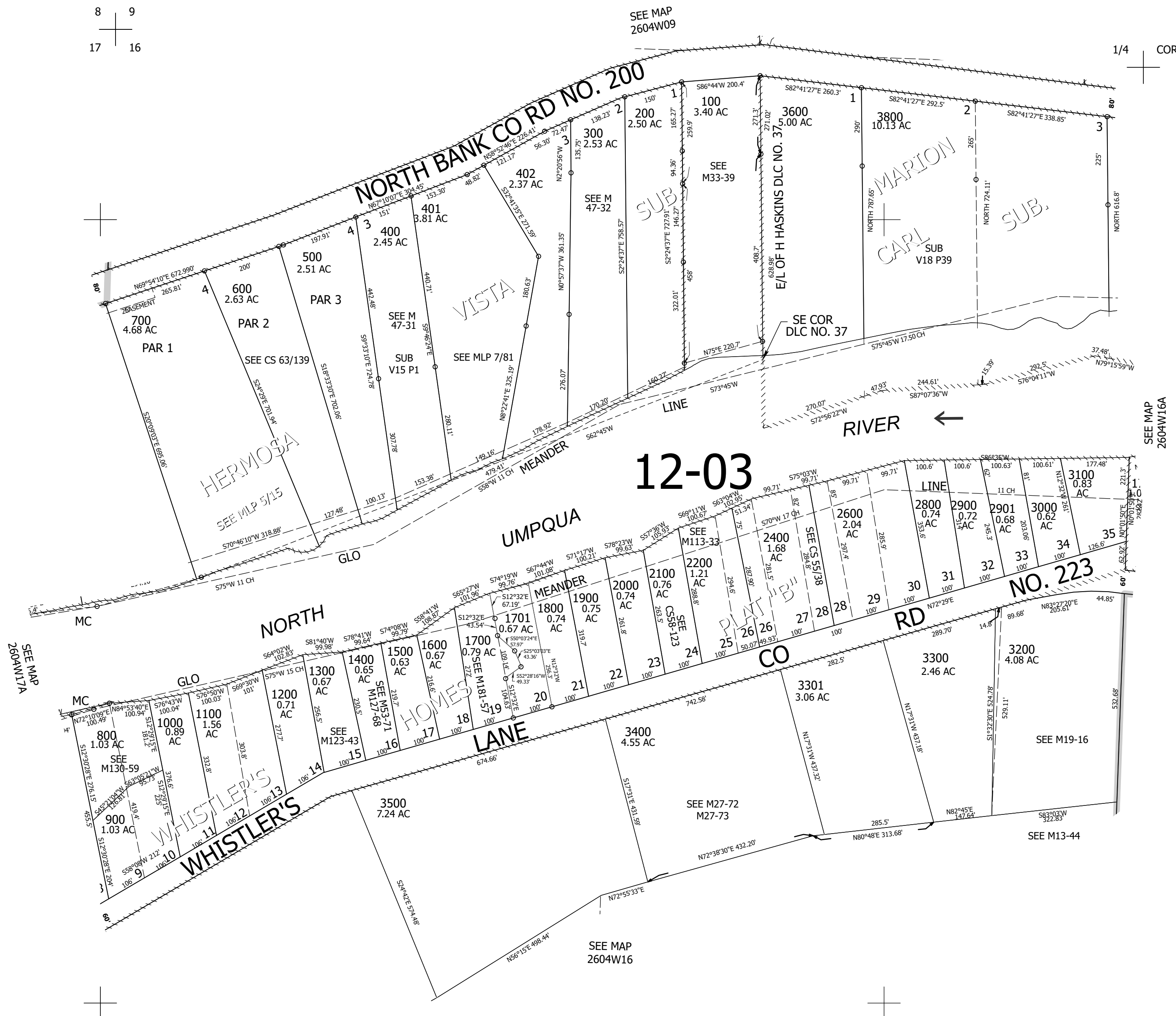
Date Exported 2026-02-23

260416B

CANCELLED NOS:
2700 2300 2301
2500 3200M1 3300M1
3301M1 3500M1 3400M1
801 901 1702
3700

8 9
17 16

1/4 COR



SEE MAP
2604W17A

SEE MAP
2604W09

SEE MAP
2604W16A

SEE MAP
2604W16

1/4 COR

CEN SEC

260416B

Lower Right:
123°10'33"W 43°18'28"N
4209200E 609427N ft