

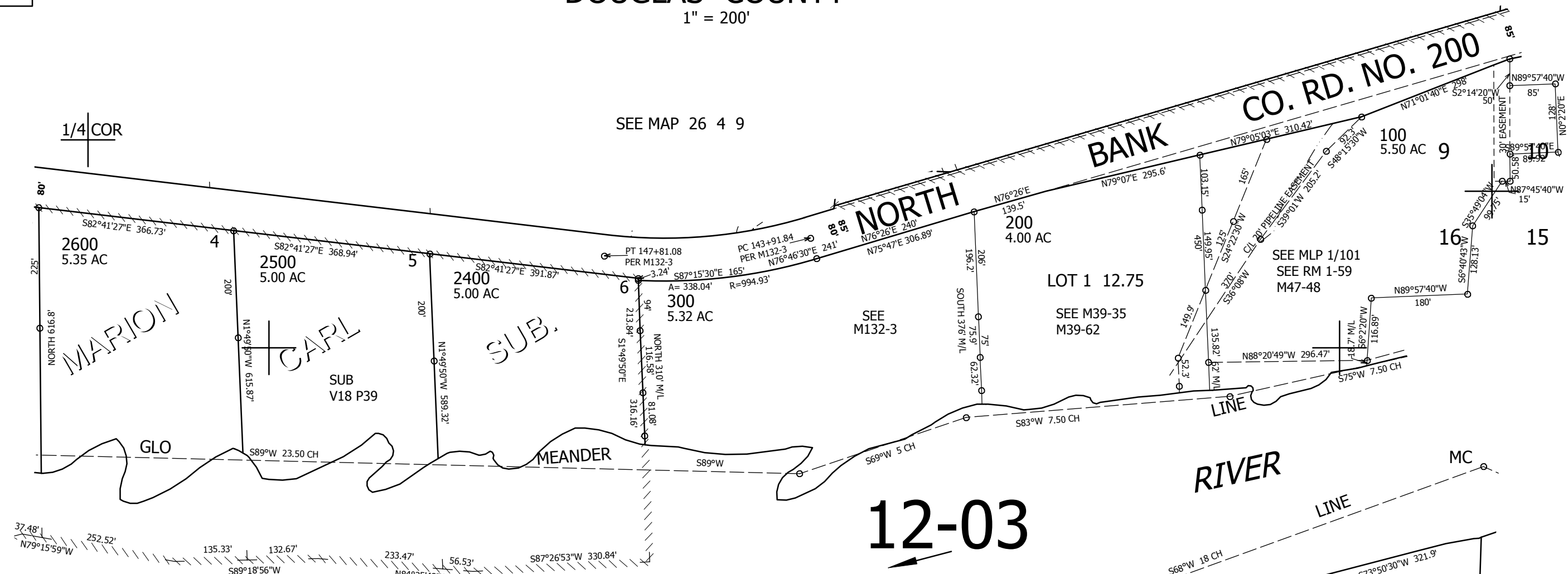
THIS MAP WAS PREPARED FOR ASSESSMENT PURPOSE ONLY.

NE1/4 SEC.16 T.26S. R.4W. W.M. DOUGLAS COUNTY

1" = 200'

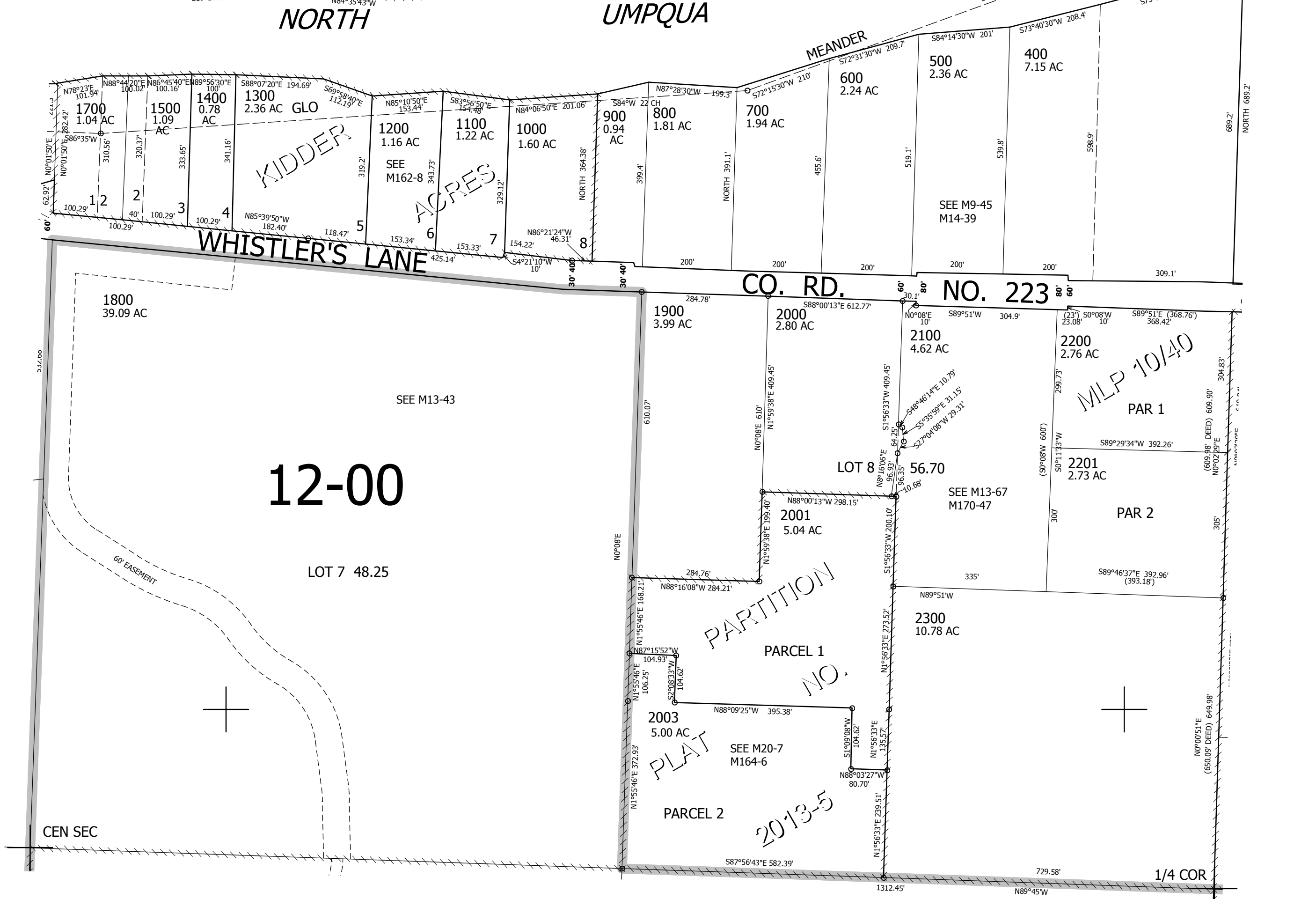
REVISED ON 5-23-17

26 4 16A



CANCELLED NO'S 1600 2002 2004 2101

SEE MAP 26 4 16B



SEE MAP 26 4 15B

SEE MAP 26 4 16

SEE MAP 26 4 16

610,000

4,209,000

26 4 16A