

THIS MAP WAS PREPARED FOR ASSESSMENT PURPOSE ONLY.

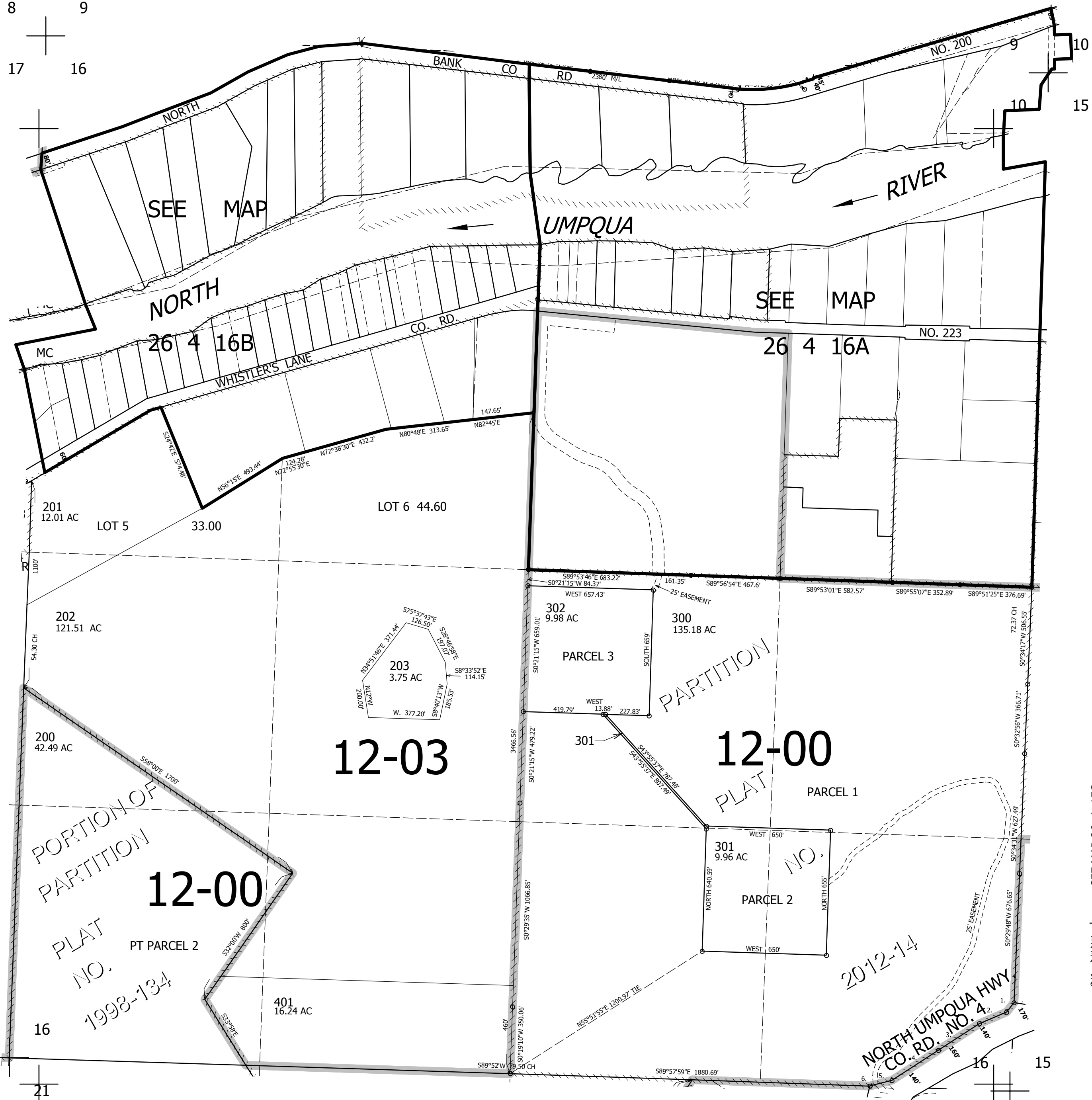
SEC.16 T.26S. R.4W. W.M.  
DOUGLAS COUNTY  
1" = 400'

REVISED ON  
11-6-12

26 4 16  
& INDEX

SEE MAP 26 4 9

8 9  
17 16



CANCELLED NO'S  
100 200M1 201M1  
400 400M1 202M1  
203M1 401M1

SEE MAP 26 4 17A

SEE MAP 26 4 15B

SEE MAP 26 4 17

SEE MAP 26 4 15C

17 16  
20 21

21 22  
4,211.00b

SEE MAP 26 4 21

607,000

26 4 16  
& INDEX

PORTION OF  
PARTITION  
12-00  
PLAT  
NO.  
1998-134  
PT PARCEL 2

12-03

12-00  
PARCEL 1

2012-14

TAXLOT 300  
1. S34°54'47"W 54.49'  
2. S65°15'33"W 153.89'  
3. S55°25'33"W 256.19'  
4. LC-S55°03'35"W 306.06'  
A=306.17' R=3339.03'  
5. S75°14'22"W 68.31'  
6. S8°51'03"W 0.36'