

THIS MAP WAS PREPARED FOR ASSESSMENT PURPOSE ONLY.

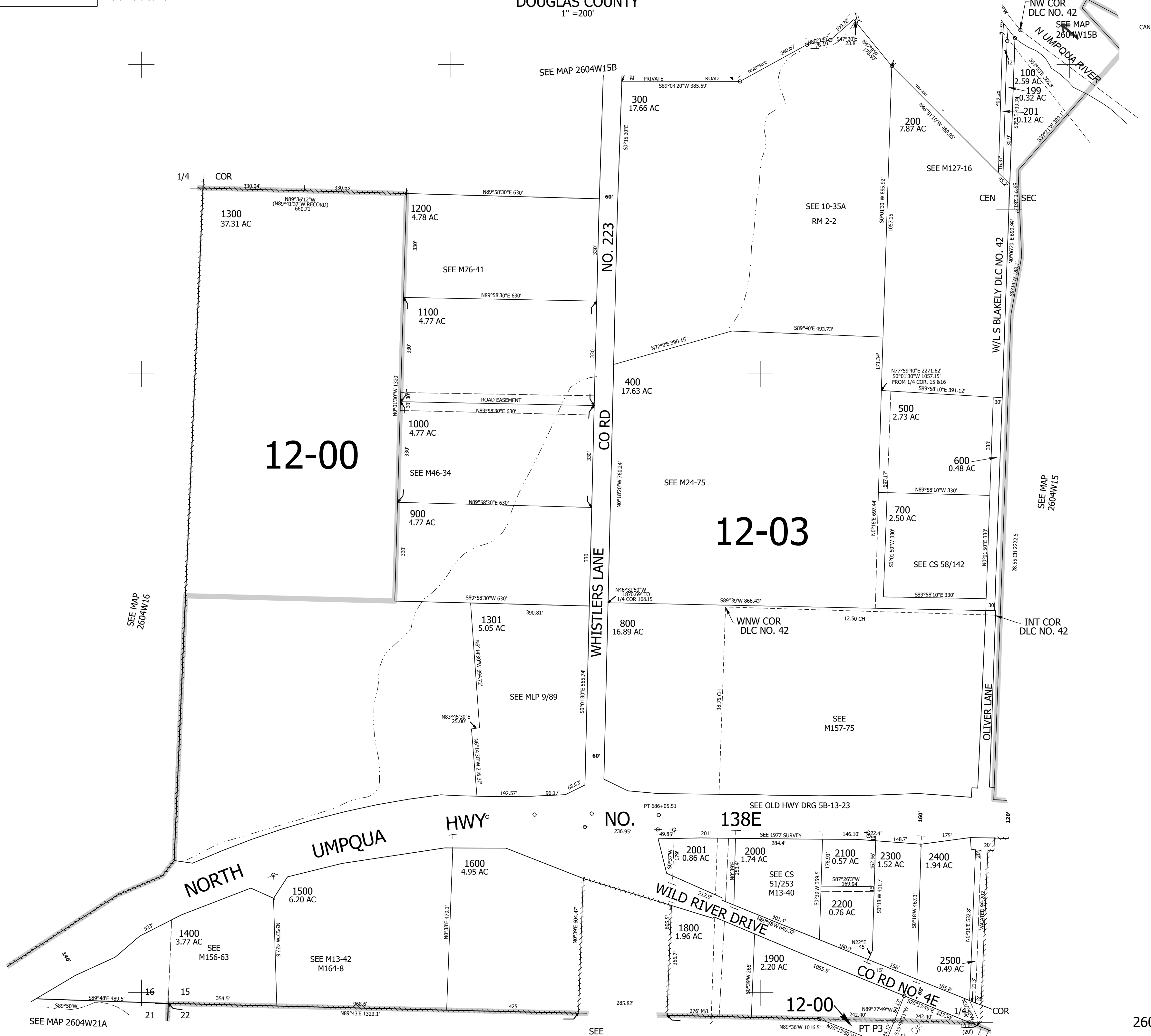
Upper Left:  
123°10'16"W 43°18'36"N  
4210452E 610236N ft

SW1/4 SEC.15 T.26S. R.04W. W.M.  
DOUGLAS COUNTY  
1" = 200'

Date Exported 2024-07-31

260415C

CANCELLED NOS:  
101 1700 401  
1901



12-00

12-03

138E

12-00

SEE MAP 2604W16

SEE MAP 2604W15B

W/L S BLAKELY DLC NO. 42

SEE MAP 2604W15

SEE MAP 2604W21A

SEE MAP 2604W22

260415C

Lower Right:  
123°9'22"W 43°18'3"N  
4214376E 606759N ft

POP. OF  
PP. NO.  
2019-34