

THIS MAP WAS PREPARED FOR ASSESSMENT PURPOSE ONLY.

Upper Left:  
123°10'13"W 43°19'2"N  
4210759E 612870N ft

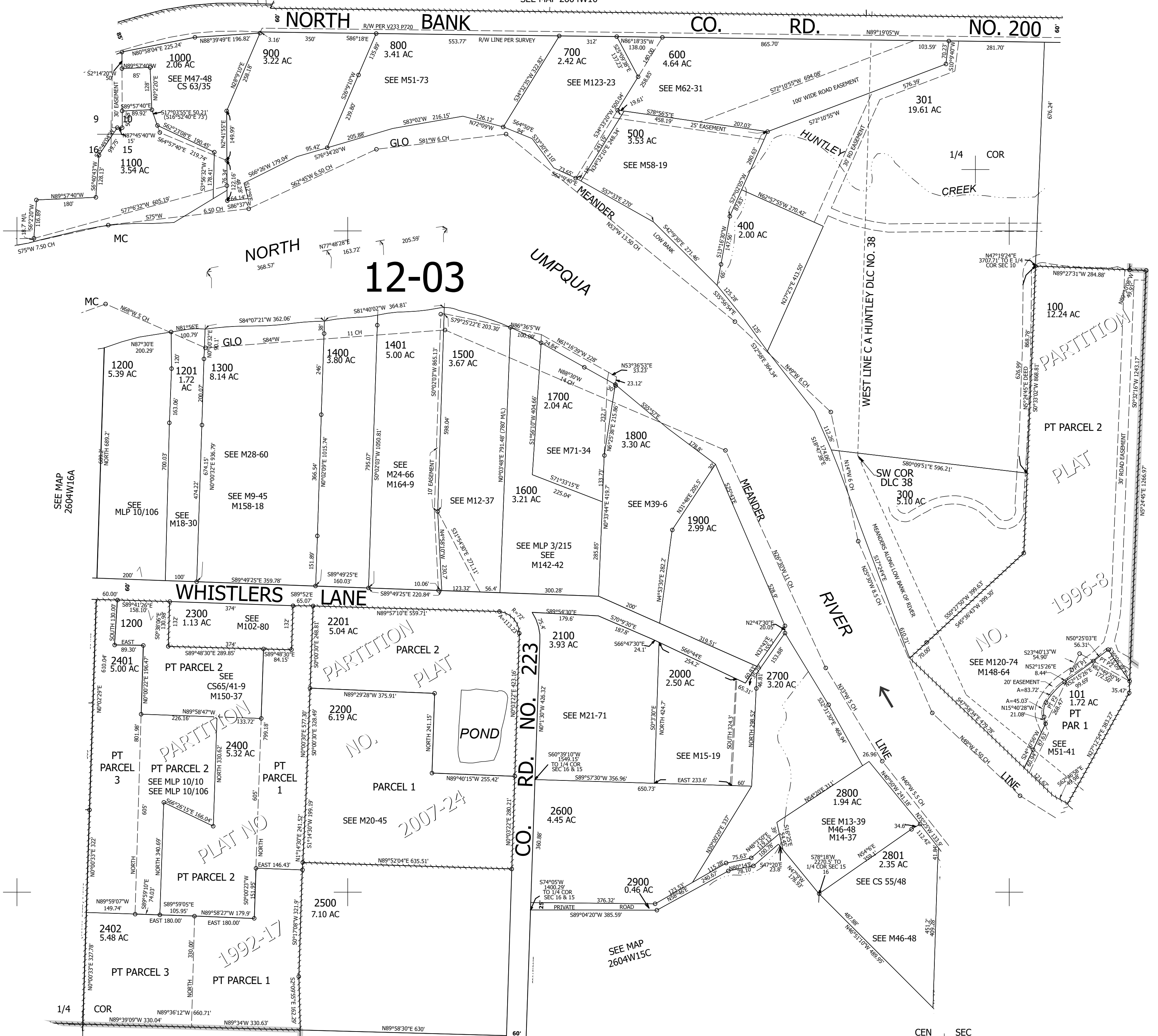
NW1/4 SEC.15 T.26S. R.04W. W.M.  
DOUGLAS COUNTY  
1" = 200'

Date Exported 2025-01-22

260415B

CANCELLED NOS:  
2500A1 501 200  
701 2403 2404  
2405 102 103  
104 2406

SEE MAP 2604W10



SEE MAP 2604W16A

SEE MAP 2604W15

260415B

Lower Right:  
123°9'19"W 43°18'29"N  
4214683E 609392N ft