

THIS MAP WAS PREPARED FOR ASSESSMENT PURPOSE ONLY.

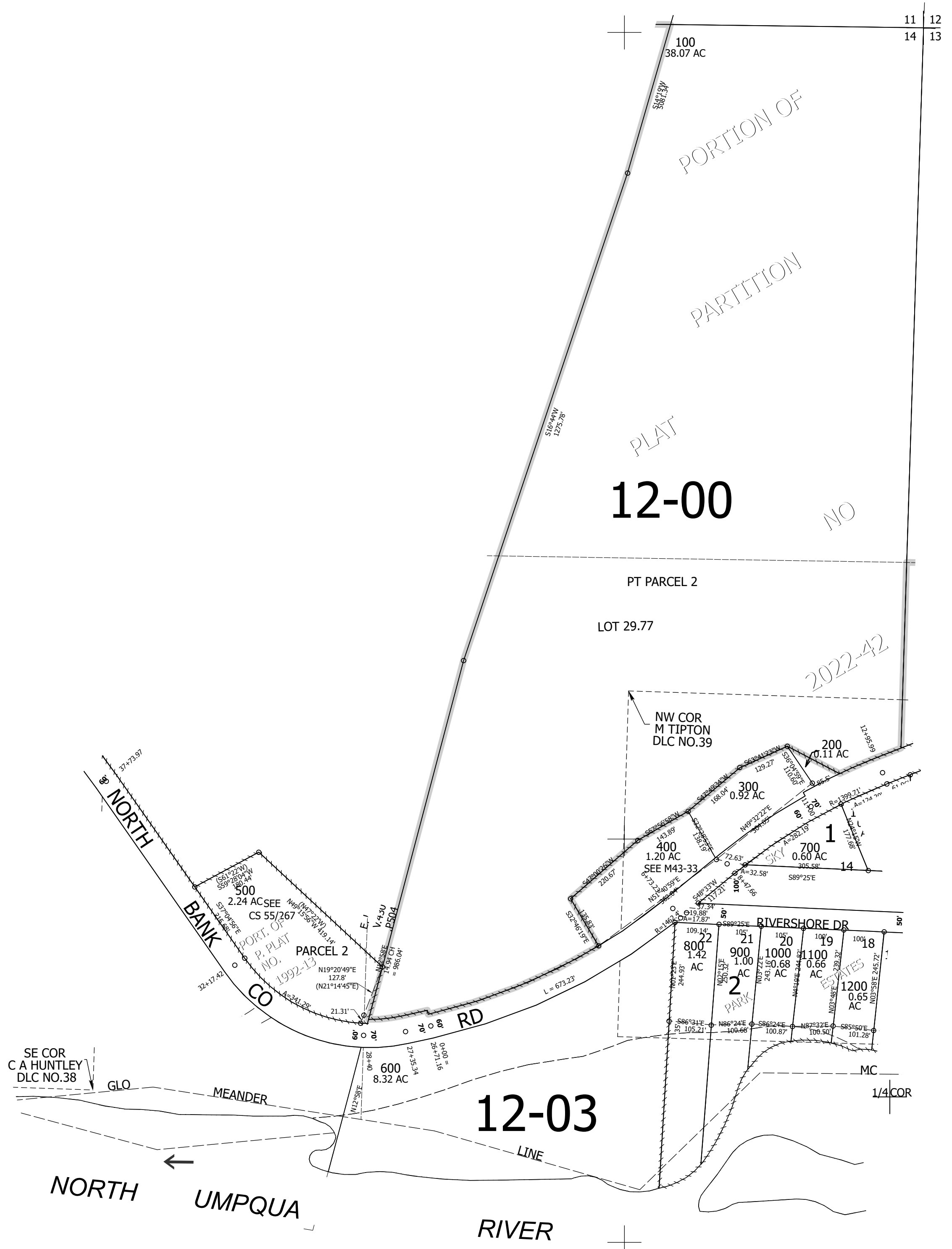
Upper Left:
123°8'26"W 43°18'58"N
4218670E 612244N ft

NE1/4 SEC.14 T.26S. R.04W. W.M.
DOUGLAS COUNTY
1" = 200'

Date Exported: 12/15/2022 3:46 PM

2604W14A
&
CANCELLED NOS:

1/4 COR



CEN SEC

SE COR
C A HUNTLEY
DLC NO.38

NORTH
← UMPQUA RIVER

1/4 COR

2604W14A
&

Lower Right:
123°7'32"W 43°18'25"N
4222549E 608756N ft