

THIS MAP WAS PREPARED FOR ASSESSMENT PURPOSE ONLY.

SE1/4 SEC.13 T.26S. R.4W. W.M.
DOUGLAS COUNTY
1" = 200'

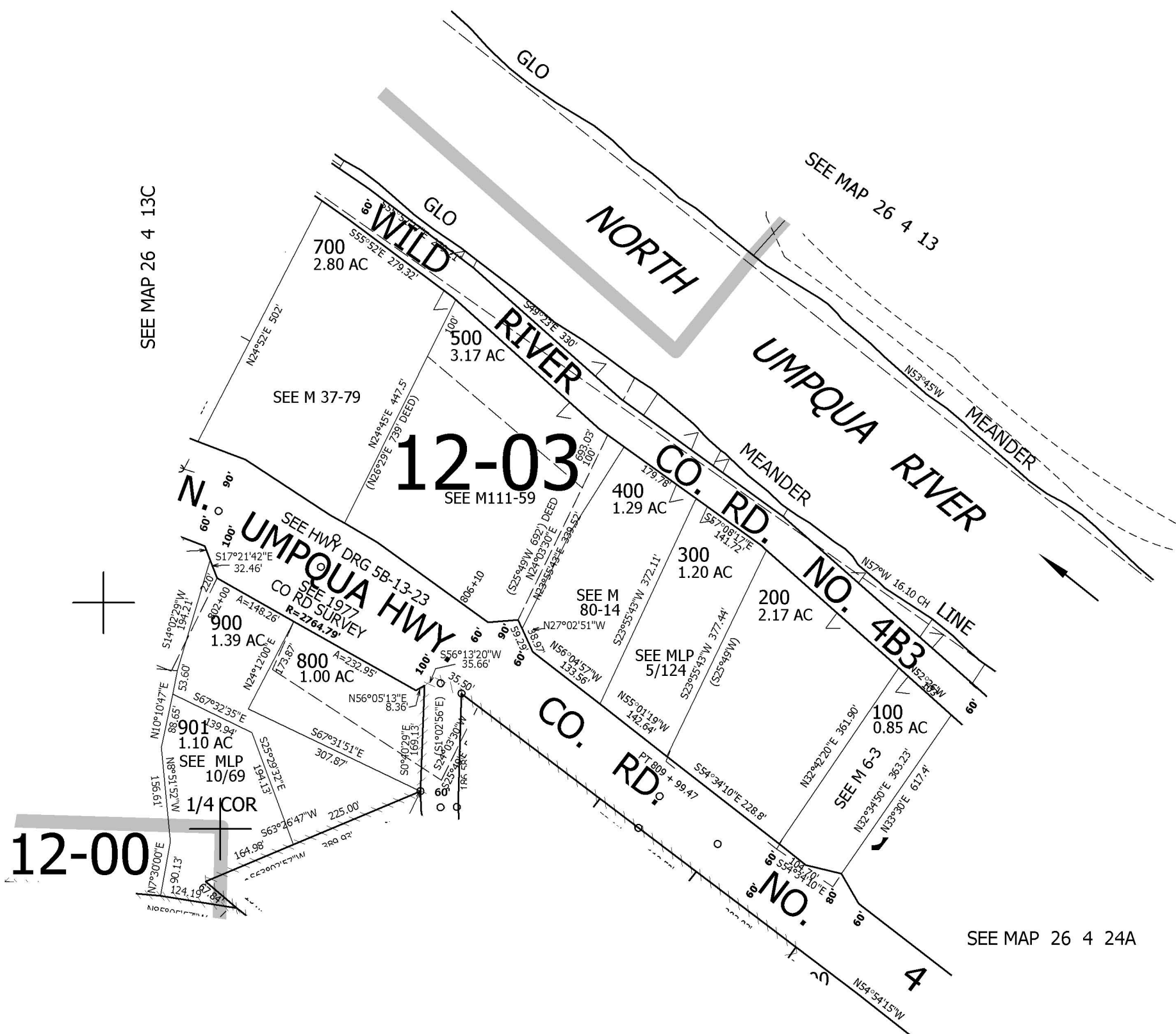
REVISED ON
6-2-94

26 4 13D

CEN SEC

1/4 COR

CANCELLED NO'S
401 600



607,000

| | |
|----|----|
| 13 | 18 |
| 24 | 19 |

4,226,000

26 4 13D