

THIS MAP WAS PREPARED FOR ASSESSMENT PURPOSE ONLY.

Upper Left:
123°7'53"W 43°18'36"N
4221067E 609879N ft

SW1/4 SEC.13 T.26S. R.04W. W.M.
DOUGLAS COUNTY
1" = 200'

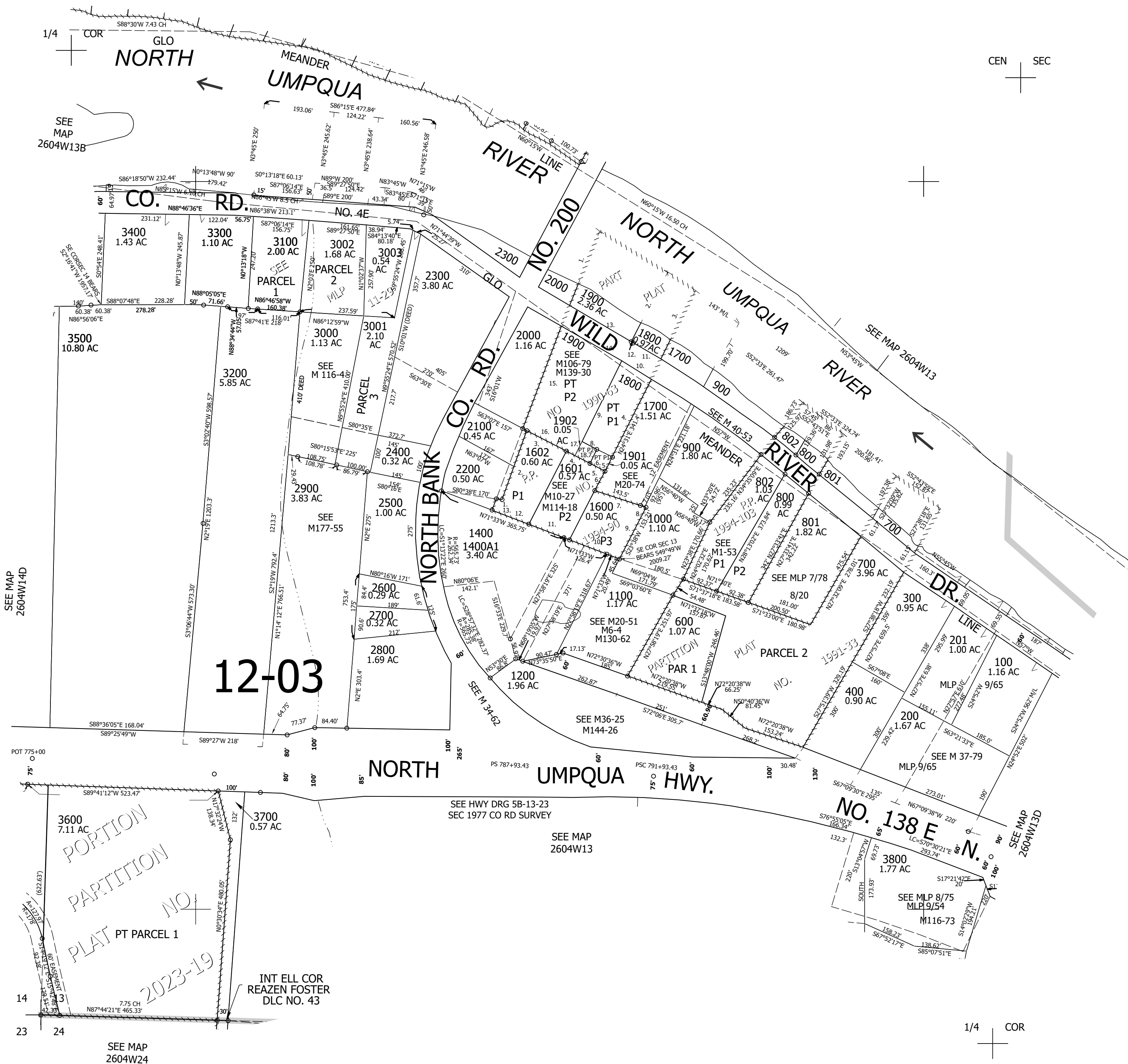
Date Exported 2026-03-24

260413C

- PP 1990-63
1. N18°26'07"E 225'
 2. N24°24'30"E 220'
 3. S24°17'58"W 220'
 4. S24°17'58"W 243.78'
 5. S24°25'28"W 46.18'
 6. N64°36'04"W 47.45'
 7. S24°15'55"W 45.45'
 8. S65°33'50"E 42.91'
 9. S24°24'30"W 252.98'
 10. S59°40'31"E 90.49'
 11. S59°40'31"E 83.39'
 12. S58°12'08"E 7.01'
 13. S58°12'08"E 205.66'
 14. S58°12'08"E 199.22'
 15. N18°28'07"E 321.21'
 16. N64°19'30"W 207.4'
 17. N24°24'30"E 44.60'
 18. N64°19'30"W 43.10'

- PP 1994-90
1. N80°16'W 10.01'
 2. S17°57'W 197.34'
 3. N64°15'45"W 122.47'
 4. N64°15'45"W 74.91'
 5. N64°29'07"W 47.56'
 6. N24°20'55"E 53.61'
 7. N71°37'46"W 130.88'
 8. N71°29'23"W 130.88'
 9. N23°39'31"E 150.13'
 10. S71°33'E 147.01'
 11. S71°33'E 114.74'
 12. S71°33'E 114.74'
 13. N24°20'55"E 46.28'

CANCELLED NOS:
101 3801 102
601 1101 1500
1300 500 3601



SEE MAP 2604W14D

POT 775+00

14

23

24

SEE MAP 2604W24

SEE HWY DRG 5B-13-23
SEC 1977 CO RD SURVEY

SEE MAP 2604W13

NO. 138 E

SEE MAP 2604W13D

1/4 COR

260413C

Lower Right:
123°6'58"W 43°18'11"N
4224994E 606279N ft