

THIS MAP WAS PREPARED FOR ASSESSMENT PURPOSE ONLY.

Upper Left:
123°8'6"W 43°19'3"N
4220152E 612648N ft

SEC.13 T.26S. R.04W. W.M.
DOUGLAS COUNTY
1" = 400'

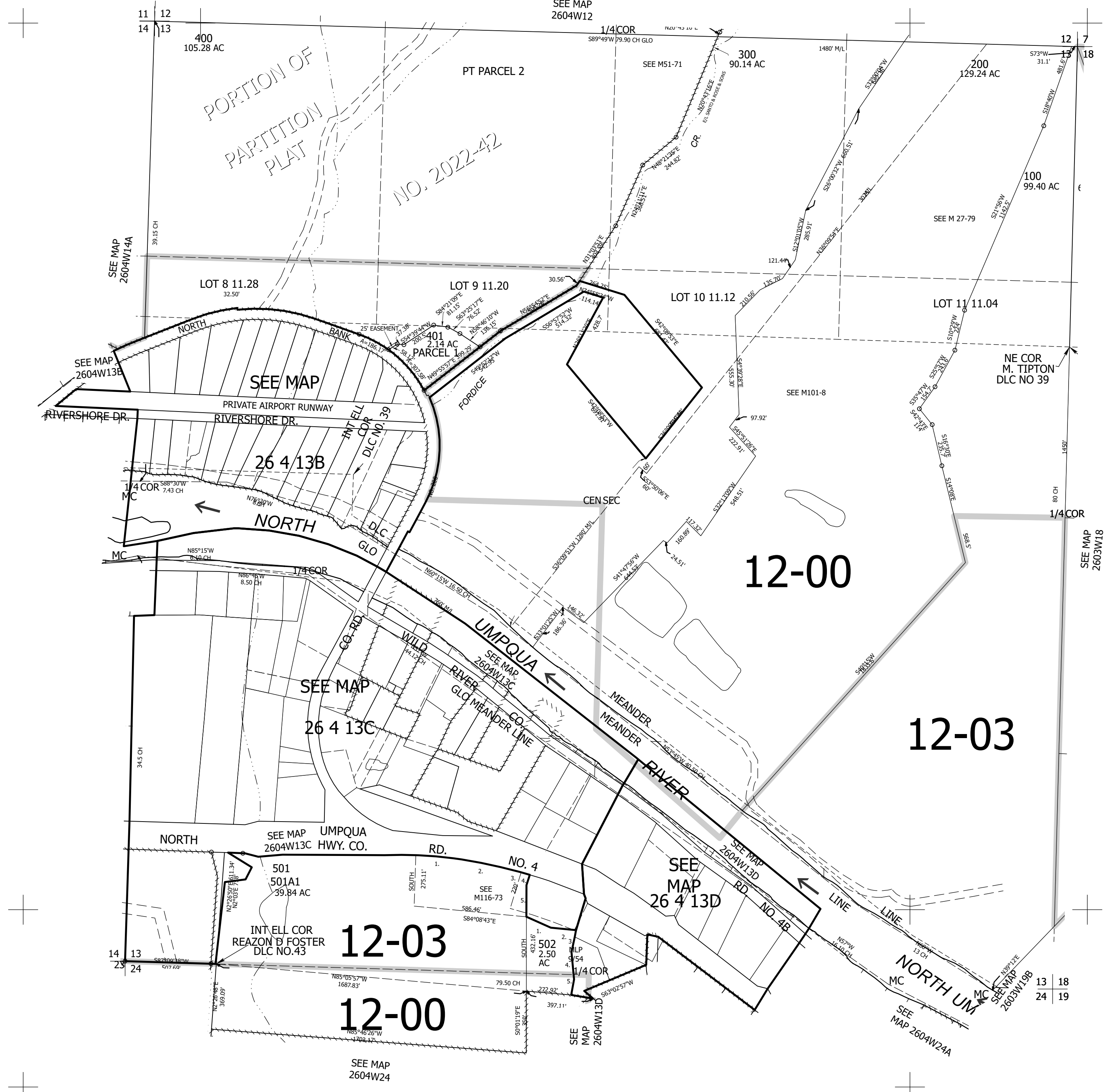
Date Expired: 12/14/2022 4:25 PM

260413 &

CANCELLED NOS:
201 505 301
503 504 500

PARCEL 501
1. S85°59'24"E 201.76'
2. LC=S79°40'27"E 273.48'
3. S76°55'05"E 132.3'
4. S13°04'57"W 69.73'
5. SOUTH 173.93'

PARCEL 502
1. S62°52'17"E 158.23'
2. S85°07'15"E 138.62'
3. S10°10'47"W 142.25'
4. S8°51'52"E 156.61'
5. S7°30'00"W 90.13'



PORTION OF
PARTITION
PLAT

NO. 2022-42

12-00

12-03

12-03

12-00

260413 &

Lower Right:
123°6'18"W 43°17'56"N
4227905E 605626N ft